



FMS GROUP
ROCK DRILLING TOOLS

PRODUCTS
CATALOG





INDEX



UNDERGROUND	R25 Bits	9-10
	R25 Rods	11-12-13-14
	R-28 Bits	15-16
	R-28 Rods	17- 18
	R-28 Couplings Sleeve	19
	R-32 Bits	20 - 21- 22
	R32 Rods	23 - 24 - 25 - 26 - 27
	R28 Rods, Cowlings	
	Sleeve Bit Adapter	28
	R38 Bits	29- 30
	R-28 Bits, Rods	31
	R-38 Rods	32
T38 Bits	33 - 34 - 35	
OPEN CAST	T38 Bits	38
	T38 Rods	39 - 40 - 41
	T38 Couplings	42
	T45 Bits	43- 44-45
	T45 Rods	46- 47 -48
	T45 Couplings, Bit & Adapters	49
	T51 Bits	50 - 51 - 52 - 53 - 54
	T51 Bits, Rods	55
	T51 Rods	56 - 57
	T51 Couplings	58
SHANKS	Atlas Copco	66 - 67 - 68
	Furukawa	69 - 70
	Furukawa, Ingersoll Rand	71
	Ingersoll Rand	72
	Montabert	74
	Sandvik-Tamrock	75 - 76 - 77 - 78
Sandvik, Tamrock, Soosan	79	
HAMMERS	Dhh 35 Dth Hammer	82
	Bits For 3" Dth Hammer	83
	Dhh 45 Dth Hammer	84
	Bits For 4" Dth Hammer	85
	Dhh 55 Dth Hammer	86
	Bits For 5" Dth Hammer	87
	Dhh 65 Dth Hammer	88
	Bits For 6" Dth Hammer	89
	Dhh 85 Dth Hammer	90
	Bits For 8' Dth Hammer	91
Delici & Kirici El Tabancaları	94 - 95 - 96 - 97 - 98	

ABOUT US

FMS GROUP, is a young and dynamic company which has taken active roles in drilling operations and has been utilizing its experience obtained during this activities in equipment supply for years.

We accompany you, not only in equipment supply but also during the site applications, with our experienced team who can offer solutions and products required in various drilling operations and different formations. We pursue for you the innovations and developments taking place in the drilling industry and directly share with you the vision of ours shaped in domestic and international trainings and cooperations with leading companies.

We do not have a working schedule, we are available 7/24 to send all these products whenever you call at our warehouse in Ankara. We provide maintenance services for your rock drills in the fastest manner possible, no matter where in Turkey or whole around the globe you are and we promise to not leave the site unless the running of the is ensured.

In brief, we are running to keep you running.

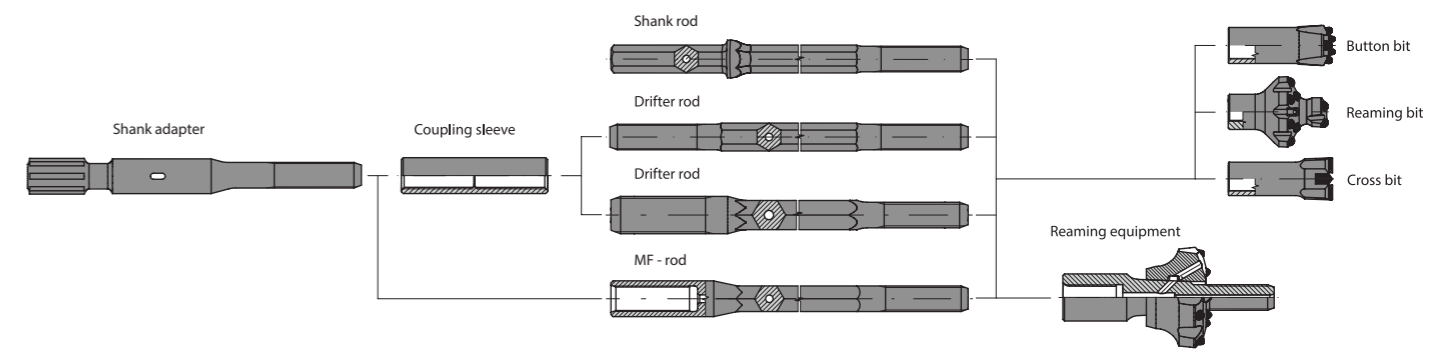
DURABILITY
PERFORMANCE
POWER



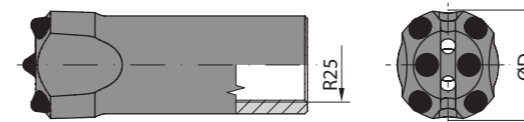
FMS



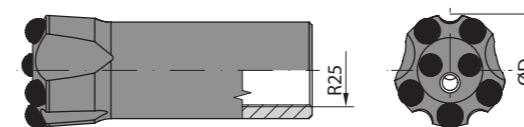
R-25 Bits



Button bit



Button bit

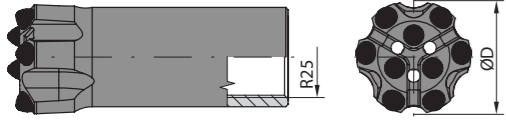


Diameter		Flushing Holes (mm)		Buttons (mm)		Weight kg	Model No
mm	inch	Side No x Size	Front No x Size	Gauge No x Size	Front No x Size		
33	1 19/64	-	2 x 5	4 x 7	2 x 7	0,3	154969
33	1 19/64	-	2 x 5	4 x 7	2 x 7	0,3	128153
35	1 3/8	-	2 x 5	4 x 8	2 x 7	0,4	147945
35	1 3/8	-	2 x 5	4 x 8	2 x 7	0,4	148335
37	1 29/64	-	2 x 5	4 x 8	2 x 7	0,5	100704
37	1 29/64	-	2 x 5	4 x 8	2 x 7	0,5	121227
38	1 1/2	-	2 x 5	4 x 9	2 x 7	0,5	179662
38	1 1/2	-	2 x 5	4 x 9	2 x 7	0,5	156826
41	1 5/8	-	2 x 6	4 x 9	2 x 8	0,6	101334
41	1 5/8	-	2 x 6	4 x 9	2 x 8	0,6	162445
43	1 11/16	-	2 x 6	4 x 10	2 x 8	0,6	152624
43	1 11/16	-	2 x 6	4 x 10	2 x 8	0,6	185123
45	1 3/4	-	2 x 6	4 x 10	2 x 9	0,7	165365
45	1 3/4	-	2 x 6	4 x 10	2 x 9	0,7	142175
33	1 19/64	1 x 5	1 x 5	5 x 7	2 x 7	0,3	101878
33	1 16/64	1 x 5	1 x 5	5 x 7	2 x 7	0,3	142455
35	1 3/8	1 x 6	1 x 5	5 x 8	2 x 7	0,4	166741
35	1 3/8	1 x 6	1 x 5	5 x 8	2 x 7	0,4	108256
37	1 29/64	1 x 6	1 x 5	5 x 8	2 x 7	0,5	178152
37	1 28/64	1 x 6	1 x 5	5 x 8	2 x 7	0,5	182400
38	1 1/2	1 x 6	1 x 5	5 x 9	2 x 7	0,5	111443
38	1 1/2	1 x 6	1 x 5	5 x 9	2 x 7	0,5	190299
41	1 5/8	1 x 6	1 x 5	5 x 9	2 x 8	0,6	114009
41	1 5/8	1 x 6	1 x 5	5 x 9	2 x 8	0,6	107126
43	1 11/16	1 x 6	1 x 5	5 x 10	2 x 8	0,6	132793
43	1 11/16	1 x 6	1 x 5	5 x 10	2 x 8	0,6	138604
45	1 3/4	1 x 6	1 x 5	5 x 10	2 x 9	0,7	132129
45	1 3/4	1 x 6	1 x 5	5 x 10	2 x 9	0,7	130251

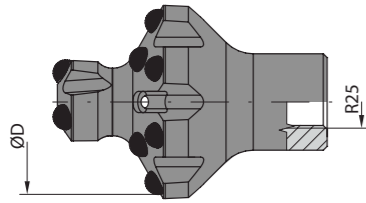
R-25 Bits



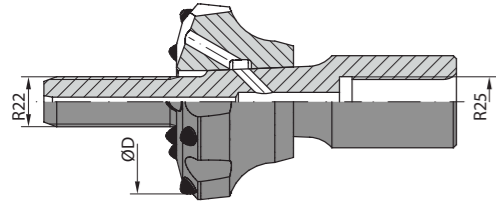
Button bit



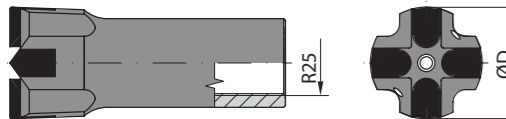
Reaming bit,



Reaming equipment,



Cross bit,

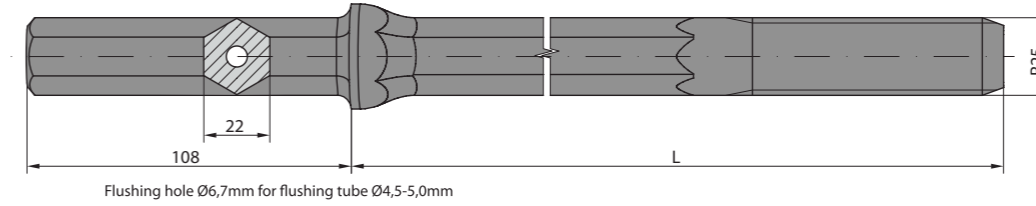


Diameter		Flushing Holes (mm)		Buttons (mm)		Weight kg	Model No
mm	inch	Side No x Size	Front No x Size	Gauge No x Size	Front No x Size		
35	1 3/8	-	3 x 5	6 x 7	3 x 7	0,4	161051
35	1 3/8	-	3 x 5	6 x 7	3 x 7	0,4	144366
37	1 29/64	1 x 5	3 x 5	6 x 7	3 x 7	0,5	126776
37	1 29/64	1 x 5	3 x 5	6 x 7	3 x 7	0,5	137558
38	1 1/2	1 x 5	3 x 5	6 x 7	3 x 7	0,6	151251
38	1 1/2	1 x 5	3 x 5	6 x 8	3 x 7	0,6	146415
41	1 5/8	1 x 5	3 x 5	6 x 8	3 x 7	0,6	170742
41	1 5/8	1 x 5	3 x 5	6 x 8	3 x 7	0,6	150713
43	1 11/16	1 x 5	3 x 6	6 x 9	3 x 8	0,7	155971
43	1 11/16	1 x 5	3 x 6	6 x 9	3 x 8	0,7	102018
45	1 3/4	1 x 5	3 x 6	6 x 10	3 x 8	0,8	162165
45	1 3/4	1 x 5	3 x 6	6 x 10	3 x 8	0,8	107149
48	1 7/8	1 x 5	3 x 6	6 x 10	3 x 9	0,8	168472
48	1 7/8	1 x 5	3 x 5	6 x 10	3 x 9	0,8	137359
51	2	1 x 5	3 x 5	6 x 10	3 x 9	0,9	193128
51	2	1 x 5	3 x 5	6 x 10	3 x 9	0,9	104441
64	2 1/2	-	4 x 5	8 x 9	7 x 8	1,7	151131
64	2 1/2	-	4 x 5	8 x 9	7 x 8	1,7	124174
76	3	-	4 x 5	8 x 10	7 x 9	2,1	114561
76	3	-	4 x 5	8 x 10	7 x 9	2,1	152574
89	3 1/2	-	4 x 5	8 x 12	7 x 10	2,5	142964
89	3 1/2	-	4 x 5	8 x 12	7 x 10	2,5	165318
102	4	-	4 x 5	8 x 13	7 x 13	2,9	186772
102	4	-	4 x 5	8 x 13	7 x 13	2,9	116150
64	2 1/2	-	2 x 5	8 x 9	4 x 8	2,1	199773
64	2 1/2	-	2 x 5	8 x 9	4 x 8	2,1	197447
76	3	-	2 x 5	8 x 10	4 x 10	2,5	150489
76	3	-	2 x 5	8 x 10	4 x 10	2,5	126651
89	3 1/2	-	2 x 5	8 x 10	6 x 10	3,0	131849
89	3 1/2	-	2 x 5	8 x 10	6 x 10	3,0	173887
105	4 5/32	-	2 x 5	8 x 12	4 x 12	3,5	195011
105	4 5/32	-	2 x 5	8 x 12	4 x 12	3,5	117412
35	1 3/8	2 x 5	1 x 4,5	-	-	0,4	162925
38	1 1/2	2 x 5	1 x 4,5	-	-	0,5	134580
41	1 5/8	2 x 5	1 x 4,5	-	-	0,6	189218
43	1 11/16	2 x 5	1 x 4,5	-	-	0,6	116573
45	1 3/4	2 x 5	1 x 4,5	-	-	0,7	193140
48	1 7/8	2 x 5	1 x 5	-	-	0,7	195177
51	2	2 x 5	1 x 5	-	-	0,8	184502

R-25 Rods

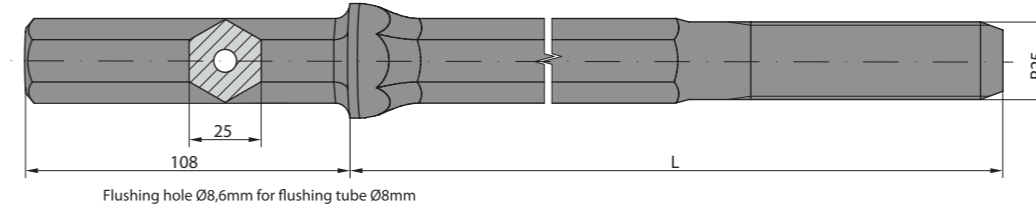


Shank rod, Hex 22 - R25



Hex		Thread	Dimensions Length			Weight kg	Model No
mm	inch		mm	ft	inch		
22	7/8	R25	610	2	-	2,3	231785
22	7/8	R25	760	2	6	2,7	216079
22	7/8	R25	1000	3	3 1/2	3,5	207919
22	7/8	R25	1200	3	11	4,1	211660
22	7/8	R25	1600	5	3	5,3	200260
22	7/8	R25	1830	6	-	6,0	236634
22	7/8	R25	2400	7	10 1/2	7,7	200563
22	7/8	R25	3200	10	6	10,2	201637
22	7/8	R25	3660	12	-	11,6	207992
22	7/8	R25	4000	13	1 1/2	12,6	206244

Shank rod, Hex 25 - R25

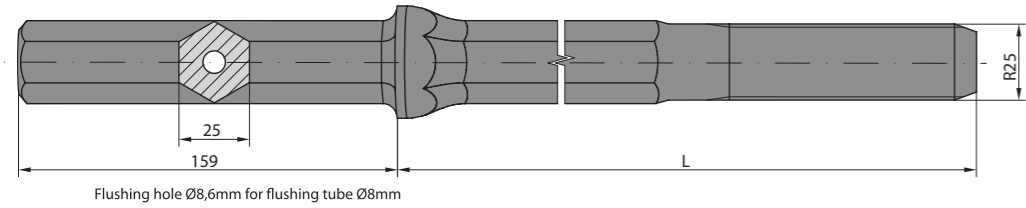


Hex		Thread	Dimensions Length			Weight kg	Model No
mm	inch		mm	ft	inch		
25	1	R25	610	2	-	2,9	273136
25	1	R25	760	2	6	3,5	265280
25	1	R25	1000	3	3 1/2	4,4	224522
25	1	R25	1200	3	11	5,1	267176
25	1	R25	1600	5	3	6,7	266665
25	1	R25	1830	6	-	7,6	228277
25	1	R25	2400	7	10 1/2	9,8	237061
25	1	R25	3200	10	6	12,9	298352
25	1	R25	3660	12	-	14,3	257226
25	1	R25	4000	13	1 1/2	16,2	278937

R-25 Rods



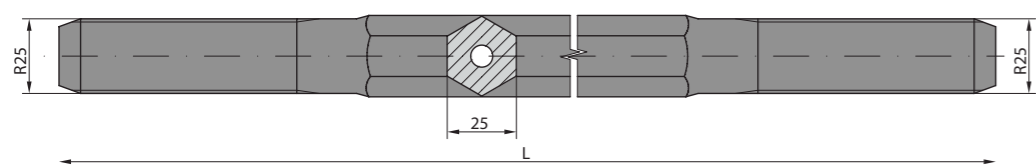
Shank rod, Hex 25 - R25



Flushing hole Ø8,6mm for flushing tube Ø8mm

Hex		Thread	Dimensions Lenght			Weight kg	Model No
mm	inch		mm	ft	inch		
25	1	R25	610	2	-	3,1	266424
25	1	R25	760	2	6	3,7	295760
25	1	R25	1000	3	3 ½	4,6	286136
25	1	R25	1200	3	11	5,3	264689
25	1	R25	1600	5	3	6,9	220186
25	1	R25	1830	6	-	7,8	281553
25	1	R25	2400	7	10 ½	10,0	210099
25	1	R25	3200	10	6	13,1	201299
25	1	R25	3660	12	-	14,5	217902
25	1	R25	4000	13	1 ½	16,4	285234

Drifter rod, R25 - Hex 25 - R25

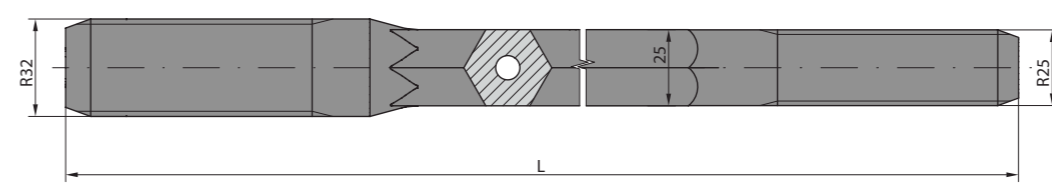


Hex		Thread	Dimensions Lenght			Weight kg	Model No
mm	inch		mm	ft	inch		
25	1	R25/R25	610	2	-	2,0	236381
25	1	R25/R25	915	3	-	3,2	255387
25	1	R25/R25	1220	4	-	4,3	204641
25	1	R25/R25	1525	5	-	5,4	264354
25	1	R25/R25	1830	6	-	6,5	255096
25	1	R25/R25	2435	8	-	8,7	216682
25	1	R25/R25	3050	10	-	10,8	276626
25	1	R25/R25	3660	12	-	13,8	202421

R-25 Rods

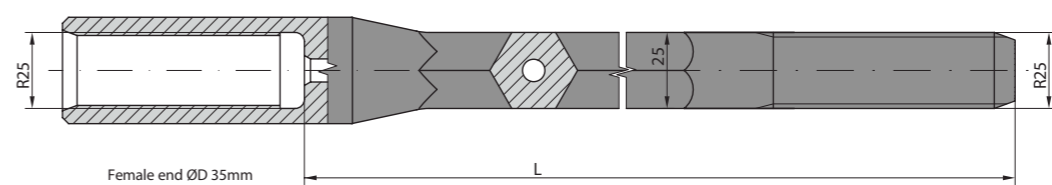


Drifter rod, R32 - Hex 25 - R25



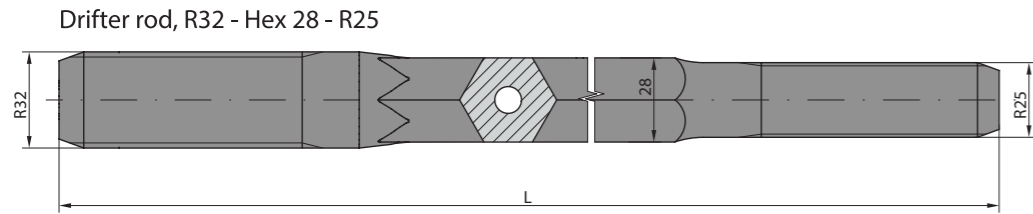
Hex		Thread	Dimensions Lenght			Weight kg	Model No
mm	inch		mm	ft	inch		
25	1	R32/R25	610	2	-	2,5	279343
25	1	R32/R25	915	3	-	3,7	240032
25	1	R32/R25	1220	4	-	4,8	228790
25	1	R32/R25	1525	5	-	6,0	264615
25	1	R32/R25	1830	6	-	7,2	218814
25	1	R32/R25	2435	8	-	9,5	251794
25	1	R32/R25	3050	10	-	11,9	231107
25	1	R32/R25	3660	12	-	14,3	269907
25	1	R32/R25	4000	13	1 ½	15,6	291203

MF- rod, R25 - Hex 25 - R25



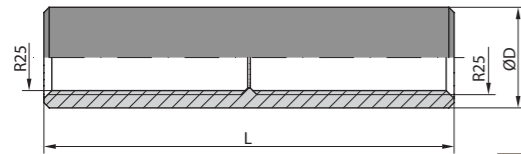
Hex		Thread	Dimensions Lenght			Weight kg	Model No
mm	inch		mm	ft	inch		
25	1	R25/R25	610	2	-	2,8	265081
25	1	R25/R25	915	3	-	4,0	209245
25	1	R25/R25	1220	4	-	5,1	295788
25	1	R25/R25	1525	5	-	6,3	248778
25	1	R25/R25	1830	6	-	7,5	280106
25	1	R25/R25	2435	8	-	9,9	267994
25	1	R25/R25	3050	10	-	12,2	245417
25	1	R25/R25	3660	12	-	14,6	217327

R-25 Rods



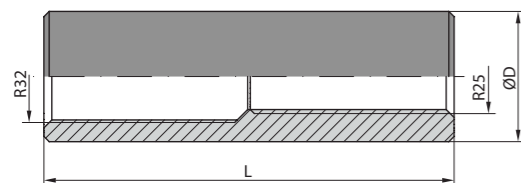
Hex		Thread	Dimensions Lenght			Weight	Model
mm	inch		mm	ft	inch		
28	1 1/8	R32/R25	610	2	-	3,0	234722
28	1 1/8	R32/R25	915	3	-	4,5	211944
28	1 1/8	R32/R25	1220	4	-	6,1	295312
28	1 1/8	R32/R25	1525	5	-	7,6	263103
28	1 1/8	R32/R25	1830	6	-	9,1	284949
28	1 1/8	R32/R25	2435	8	-	12,2	280971
28	1 1/8	R32/R25	3050	10	-	15,3	293279
28	1 1/8	R32/R25	3660	12	-	18,4	211579
28	1 1/8	R32/R25	4000	13	1 1/2	20,1	205125

Coupling sleeve R25



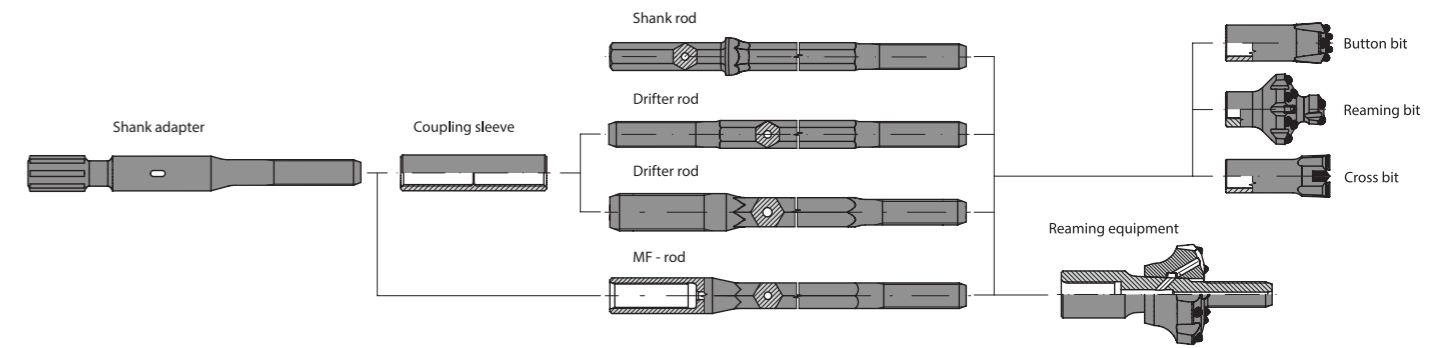
Diameter		Thread	Lenght		Weight	Model
mm	inch		mm	inch		
34	1 5/16	R25/R25	140	5 29/32	0,7	382288

Coupling sleeve R32 - R25



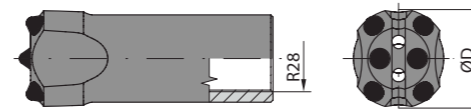
Diameter		Thread	Lenght		Weight	Model
mm	inch		mm	inch		
44	1 47/64	R32/R25	150	5 29/32	1,2	320934

R-28 Bits

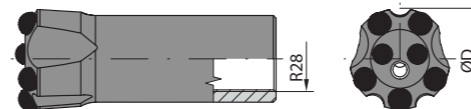


Diameter		Flushing Holes (mm)		Buttons (mm)		Weight	Model
mm	inch	No x Size	No x Size	No x Size	No x Size		
37	1 29/64	-	2 x 5	4 x 8	2 x 7	0,5	172114
37	1 29/64	-	2 x 5	4 x 8	2 x 7	0,5	163371
38	1 1/2	-	2 x 5	4 x 9	2 x 7	0,5	138649
38	1 1/2	-	2 x 5	4 x 9	2 x 7	0,5	159141
41	1 5/8	-	2 x 6	4 x 9	2 x 8	0,6	151822
41	1 5/8	-	2 x 6	4 x 9	2 x 8	0,6	175783
43	1 11/16	-	2 x 6	4 x 10	2 x 8	0,6	164668
43	1 11/16	-	2 x 6	4 x 10	2 x 8	0,6	192149
45	1 3/4	-	2 x 6	4 x 10	2 x 9	0,7	109545
45	1 3/4	-	2 x 6	4 x 10	2 x 9	0,7	172503
37	1 29/64	1 x 6	1 x 5	5 x 8	2 x 7	0,5	187876
37	1 29/64	1 x 6	1 x 5	5 x 8	2 x 7	0,5	184016
38	1 1/2	1 x 6	1 x 5	5 x 9	2 x 7	0,5	179713
38	1 1/2	1 x 6	1 x 5	5 x 9	2 x 7	0,5	131880
41	1 5/8	1 x 6	1 x 5	5 x 9	2 x 8	0,6	184195
41	1 5/8	1 x 6	1 x 5	5 x 9	2 x 8	0,6	184226
43	1 11/16	1 x 6	1 x 5	5 x 10	2 x 8	0,6	180251
43	1 11/16	1 x 6	1 x 5	5 x 10	2 x 8	0,6	126859
45	1 3/4	1 x 6	1 x 5	5 x 10	2 x 9	0,7	167512
45	1 3/4	1 x 6	1 x 5	5 x 10	2 x 9	0,7	128345
37	1 29/64	1 x 5	3 x 5	6 x 7	3 x 7	0,5	160594
37	1 29/64	1 x 5	3 x 5	6 x 7	3 x 7	0,5	194091
38	1 1/2	1 x 5	3 x 5	6 x 8	3 x 7	0,5	190532
38	1 1/2	1 x 5	3 x 5	6 x 8	3 x 7	0,5	169380
41	1 5/8	1 x 5	3 x 5	6 x 8	3 x 7	0,6	189168
41	1 5/8	1 x 5	3 x 5	6 x 8	3 x 7	0,6	184027
43	1 11/16	1 x 5	3 x 5	6 x 9	3 x 8	0,6	138829
43	1 11/16	1 x 5	3 x 5	6 x 9	3 x 8	0,6	174950
45	1 3/4	1 x 5	3 x 5	6 x 10	3 x 8	0,7	133897
45	1 3/4	1 x 5	3 x 5	6 x 10	3 x 8	0,7	176997
48	1 7/8	1 x 5	3 x 5	6 x 10	3 x 9	0,8	101134
48	1 7/8	1 x 5	3 x 5	6 x 10	3 x 9	0,8	132817
51	2	1 x 5	3 x 5	6 x 10	3 x 9	0,9	150973
51	2	1 x 5	3 x 5	6 x 10	3 x 9	0,9	189827

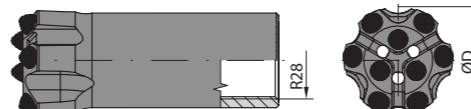
Button bit,



Button bit,



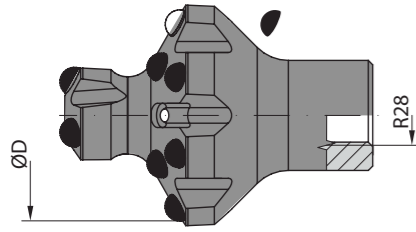
Button bit, Type D49



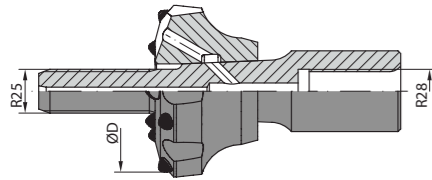
R-28 Bits



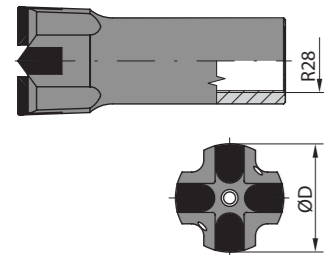
Reaming bit,



Reaming equipment,



Cross bit, Type D42

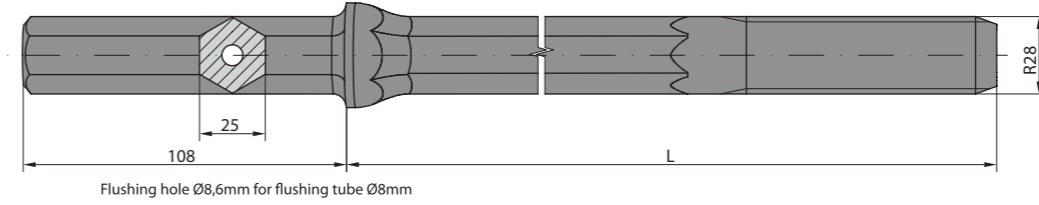


Diameter		Flushing Holes (mm)		Buttons (mm)		kg	Model No
		Side	Front	Gauge	Front		
mm	inch	No x Size	No x Size	No x Size	No x Size		
64	2 1/2	-	4 x 5	8 x 9	7 x 8	1,7	103366
64	2 1/2	-	4 x 5	8 x 9	7 x 8	1,7	186490
76	3	-	4 x 5	8 x 10	7 x 9	2,2	107731
76	3	-	4 x 5	8 x 10	7 x 9	2,2	151477
89	3 1/2	-	4 x 5	8 x 12	7 x 10	2,6	140831
89	3 1/2	-	4 x 5	8 x 12	7 x 10	2,6	136580
102	4	-	4 x 5	8 x 13	7 x 13	3,1	189290
102	4	-	4 x 5	8 x 13	7 x 13	3,1	144425
115	4 1/2	-	4 x 6	8 x 14	7 x 13	3,9	194931
115	4 1/2	-	4 x 6	8 x 14	7 x 13	3,9	103739
127	5	-	4 x 6	8 x 15	7 x 14	4,5	128880
127	5	-	4 x 6	8 x 15	7 x 14	4,5	183996
64	2 1/2	-	2 x 5	8 x 9	2 x 7	2,3	132914
64	2 1/2	-	2 x 5	8 x 9	2 x 7	2,3	104811
76	3	-	2 x 5	8 x 10	2 x 8	2,8	163687
76	3	-	2 x 5	8 x 10	2 x 8	2,8	113244
89	3 1/2	-	2 x 5	8 x 10	2 x 8	3,6	137130
89	3 1/2	-	2 x 5	8 x 10	2 x 8	3,6	104157
102	4	-	2 x 5	8 x 12	2 x 9	4,2	182629
102	4	-	2 x 5	8 x 12	2 x 9	4,2	197039
115	4 1/2	-	2 x 5	8 x 12	3 x 7	5,7	139089
115	4 1/2	-	2 x 5	8 x 12	3 x 7	5,7	180193
127	5	-	2 x 5	8 x 12	3 x 7	6,2	136995
127	5	-	2 x 5	8 x 12	3 x 7	6,2	151455
38	1 1/2	2 x 5	2 x 5	-	-	0,5	169142
41	1 5/8	2 x 5	2 x 5	-	-	0,6	103971
43	1 11/16	2 x 5	2 x 5	-	-	0,6	133888
45	1 3/4	2 x 5	2 x 5	-	-	0,7	143574
48	1 7/8	2 x 5	2 x 5	-	-	0,7	129560
51	2	2 x 5	2 x 5	-	-	0,8	147825

R-28 Rods

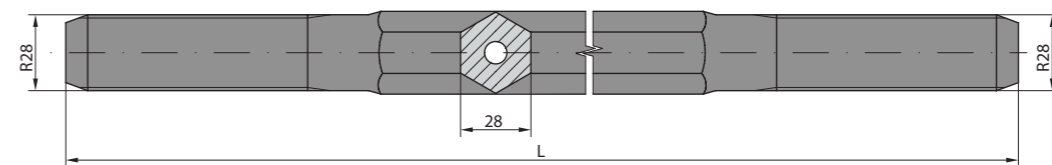


Shank rod, Hex 25- R28



Hex		Thread	Dimensions Lenght			Weight kg	Model No
mm	inch		mm	ft	inch		
25	1	R28	610	2	-	2,8	249285
25	1	R28	760	2	6	3,4	234635
25	1	R28	1000	3	3 1/2	4,3	296915
25	1	R28	1220	4	-	5,2	275792
25	1	R28	1600	5	3	6,6	241124
25	1	R28	1830	6	-	7,5	225099
25	1	R28	2435	8	-	9,9	250919
25	1	R28	3050	10	-	12,3	292270

Drifter rod, R28 - Hex 28 - R28

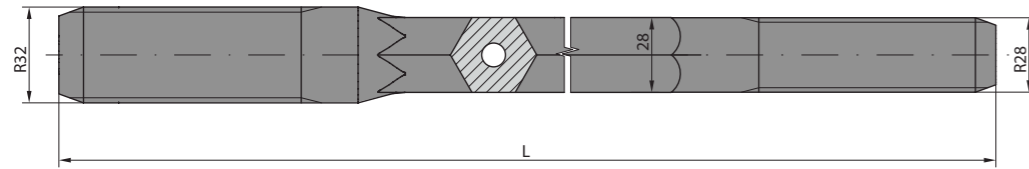


Hex		Thread	Dimensions Lenght			Weight kg	Model No
mm	inch		mm	ft	inch		
28	1 1/8	R28/R28	1220	4	-	6,0	250300
28	1 1/8	R28/R28	1525	5	-	7,5	260810
28	1 1/8	R28/R28	1830	6	-	9,0	217856
28	1 1/8	R28/R28	2435	8	-	12,1	258898
28	1 1/8	R28/R28	3050	10	-	15,2	223233
28	1 1/8	R28/R28	3660	12	-	18,3	271096
28	1 1/8	R28/R28	4305	14	1 1/2	21,5	253109

R-28 Rods

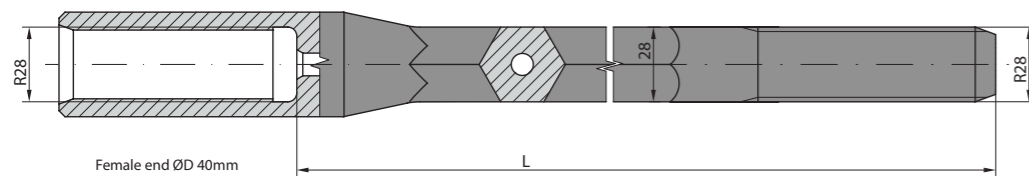


Drifter rod, R32 - Hex 28 - R28



Hex		Thread	Dimensions Lenght			Weight kg	Model No
mm	inch		mm	ft	inch		
28	1 1/8	R32/R28	1220	4	-	6,3	223492
28	1 1/8	R32/R28	1525	5	-	7,8	246982
28	1 1/8	R32/R28	1830	6	-	9,3	272033
28	1 1/8	R32/R28	2435	8	-	12,4	290330
28	1 1/8	R32/R28	3050	10	-	15,5	270359
28	1 1/8	R32/R28	3660	12	-	18,6	238786
28	1 1/8	R32/R28	4305	14	1 1/2	21,8	206175

MF-rod, R28 - Hex 28 - R28

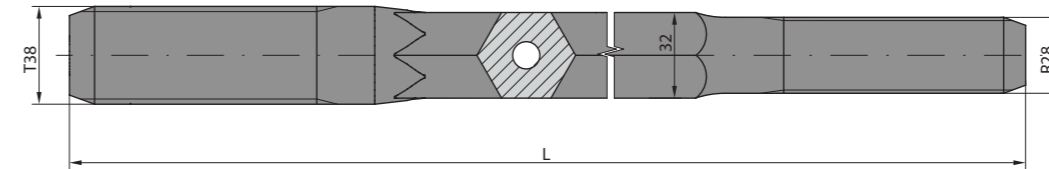


Hex		Thread	Dimensions Lenght			Weight kg	Model No
mm	inch		mm	ft	inch		
28	1 1/8	R28/R28	1220	4	-	6,6	209926
28	1 1/8	R28/R28	1525	5	-	8,1	249913
28	1 1/8	R28/R28	1830	6	-	9,6	210686
28	1 1/8	R28/R28	2435	8	-	12,7	286902
28	1 1/8	R28/R28	3050	10	-	15,8	284444
28	1 1/8	R28/R28	3660	12	-	18,9	232227
28	1 1/8	R28/R28	4305	14	1 1/2	22,1	221866

R-28 Rods, Couplings Sleeve

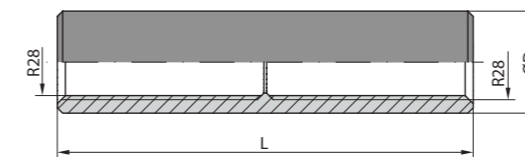


Drifter rod, T38 - Hex 32 - R28



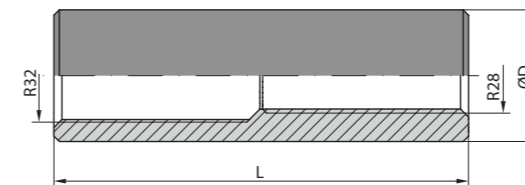
Hex		Thread	Dimensions Lenght			Weight kg	Model No
mm	inch		mm	ft	inch		
32	1 1/4	T38/R28	1830	6	-	11,7	280807
32	1 1/4	T38/R28	2435	8	-	15,5	244534
32	1 1/4	T38/R28	3050	10	-	19,5	286012
32	1 1/4	T38/R28	3660	12	-	23,4	281391
32	1 1/4	T38/R28	4305	14	1 1/2	27,5	215666

Coupling sleeve R28



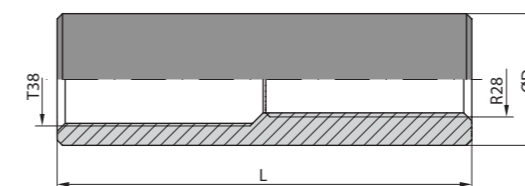
Diameter		Thread	Lenght		Weight kg	Model No
mm	inch		mm	inch		
38	1 1/2	R28/R28	150	5 29/32	0,8	317279

Coupling sleeve R32 - R28



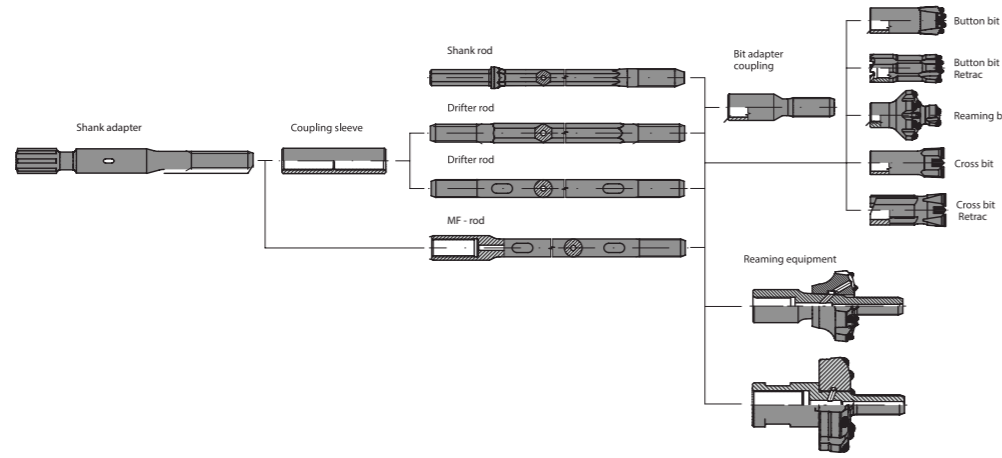
Diameter		Thread	Lenght		Weight kg	Model No
mm	inch		mm	inch		
44	1 47/64	R32/R28	150	5 29/32	1,2	331639

Coupling sleeve T38 - R28



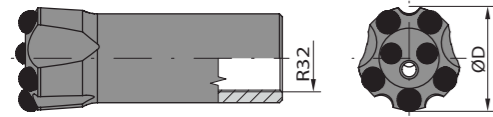
Diameter		Thread	Lenght		Weight kg	Model No
mm	inch		mm	inch		
55	2 5/32	T38/R28	165	6 1/2	2,3	301707

R-32 Bits

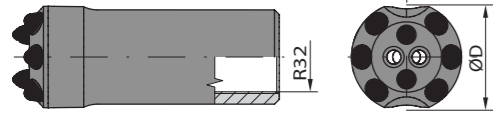


Diameter		Flushing Holes (mm)		Buttons (mm)		Weight	Model
mm	inch	Side No x Size	Front No x Size	Gauge No x Size	Front No x Size		
43	1 11/16	2 x 6	1 x 5	5 x 10	2 x 8	0,7	188249
43	1 11/16	2 x 6	1 x 5	5 x 10	2 x 8	0,7	165491
45	1 3/4	2 x 6	1 x 5	5 x 10	2 x 9	0,8	125532
45	1 3/4	2 x 6	1 x 5	5 x 10	2 x 9	0,8	183148
48	1 7/8	2 x 7	1 x 6	5 x 11	2 x 9	0,9	145869
48	1 7/8	2 x 7	1 x 6	5 x 11	2 x 9	0,9	111491
51	2	2 x 7	1 x 6	5 x 12	2 x 10	1,0	112934
51	2	2 x 7	1 x 6	5 x 12	2 x 10	1,0	144518
43	1 11/16	-	2 x 6	6 x 9	2 x 9	0,7	122763
43	1 11/16	-	2 x 6	6 x 9	2 x 9	0,7	193198
45	1 3/4	-	2 x 6	6 x 10	2 x 9	0,8	103845
45	1 3/4	-	2 x 6	6 x 10	2 x 9	0,8	198948
48	1 7/8	-	2 x 7	6 x 10	2 x 9	0,8	171168
48	1 7/8	-	2 x 7	6 x 10	2 x 9	0,8	166434
51	2	-	2 x 7	6 x 11	2 x 9	0,9	148304
51	2	-	2 x 7	6 x 11	2 x 9	0,9	195179
54	2 1/8	-	2 x 7	6 x 11	2 x 10	1,1	154049
54	2 1/8	-	2 x 7	6 x 11	2 x 10	1,1	132987
45	1 3/4	1 x 5	3 x 5	6 x 10	3 x 8	0,8	168796
45	1 3/4	1 x 5	3 x 5	6 x 10	3 x 8	0,8	148983
48	1 7/8	1 x 5	3 x 5	6 x 10	3 x 9	0,8	119550
48	1 7/8	1 x 5	3 x 5	6 x 10	3 x 9	0,8	179101
51	2	1 x 6	3 x 5	6 x 10	3 x 9	0,9	114602
51	2	1 x 6	3 x 5	6 x 10	3 x 9	0,9	154377
54	2 1/8	1 x 6	3 x 6	6 x 11	3 x 9	1,1	169575
54	2 1/8	1 x 6	3 x 6	6 x 11	3 x 9	1,1	137456
57	2 1/4	1 x 6	3 x 6	6 x 11	3 x 10	1,2	104399
57	2 1/4	1 x 6	3 x 6	6 x 11	3 x 10	1,2	134700
61	2 13/32	1 x 6	3 x 6	6 x 12	3 x 10	1,3	177565
61	2 13/32	1 x 6	3 x 6	6 x 12	3 x 10	1,3	102113
64	2 1/2	1 x 6	3 x 6	6 x 12	3 x 11	1,3	194290
64	2 1/2	1 x 6	3 x 6	6 x 12	3 x 11	1,3	166923

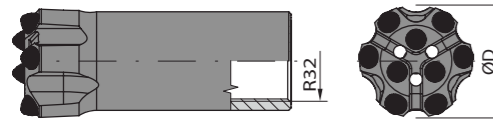
Button bit,



Button bit,



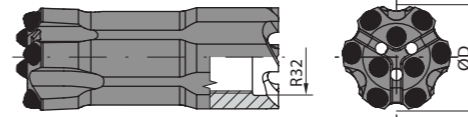
Button bit,



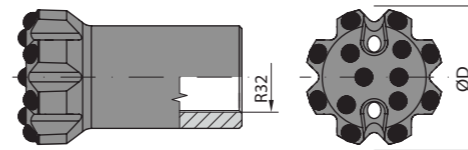
R-32 Bits



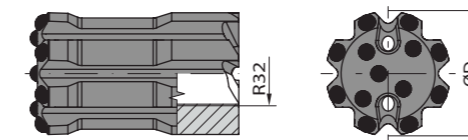
Button bit, Retrac,



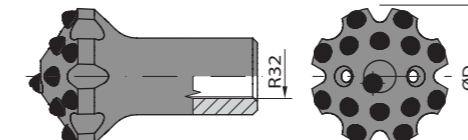
Button bit,



Button bit



Reaming bit



Diameter		Flushing Holes (mm)		Buttons (mm)		Weight	Model
mm	inch	Side No x Size	Front No x Size	Gauge No x Size	Front No x Size		
51	2	1 x 6	3 x 5	6 x 10	3 x 9	1,3	141647
51	2	1 x 6	3 x 5	6 x 10	3 x 9	1,3	164717
54	2 1/8	1 x 6	3 x 6	6 x 11	3 x 9	1,5	138219
54	2 1/8	1 x 6	3 x 6	6 x 11	3 x 9	1,5	103537
57	2 1/4	1 x 6	3 x 6	6 x 11	3 x 10	1,7	137103
57	2 1/4	1 x 6	3 x 6	6 x 11	3 x 10	1,7	124681
61	2 13/32	1 x 6	3 x 6	6 x 12	3 x 10	2,0	116220
61	2 13/32	1 x 6	3 x 6	6 x 12	3 x 10	2,0	109155
64	2 1/2	1 x 6	3 x 6	6 x 12	3 x 11	2,3	136010
64	2 1/2	1 x 6	3 x 6	6 x 12	3 x 11	2,3	103238
64	2 1/2	-	2 x 8	8 x 11	4 x 10	1,6	102532
70	2 3/4	-	2 x 8	8 x 12	4 x 11	1,8	149813
76	3	-	2 x 8	8 x 12	4 x 12	2,4	107916
89	3 1/2	-	2 x 8	8 x 13	5 x 12	3,5	123860
102	4	-	2 x 9	8 x 14	6 x 13	4,2	146348

Diameter		Flushing Holes (mm)		Buttons (mm)		Weight	Model
mm	inch	Side No x Size	Front No x Size	Gauge No x Size	Front No x Size		
64	2 1/2	-	2 x 8	8 x 11	4 x 10	2,4	100637
70	2 3/4	-	2 x 8	8 x 12	4 x 11	2,9	168233
76	3	-	2 x 8	8 x 12	4 x 12	3,7	152858
89	3 1/2	-	2 x 8	8 x 13	5 x 12	5,4	102344
102	4	-	2 x 9	8 x 14	6 x 13	7,2	168402
76	3	-	2 x 8	8 x 12	7 x 11	2,5	191192
76	3	-	2 x 8	8 x 12	7 x 11	2,5	189400
89	3 1/2	-	2 x 8	8 x 12	7 x 12	3,6	124380
89	3 1/2	-	2 x 8	8 x 12	7 x 12	3,6	146061
102	4	-	2 x 9	8 x 13	9 x 13	4,8	124701
102	4	-	2 x 9	8 x 13	9 x 13	4,8	138351

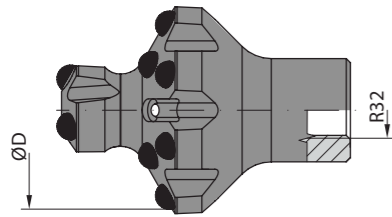
R-32 Bits



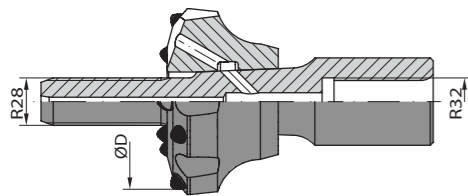
R-32 Rods



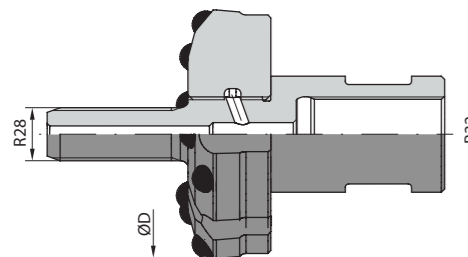
Reaming bit,



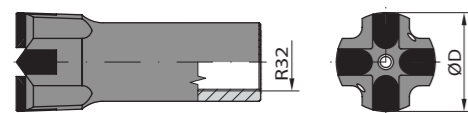
Reaming equipment



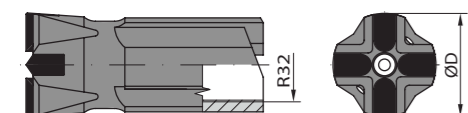
Reaming equipment



Cross bit

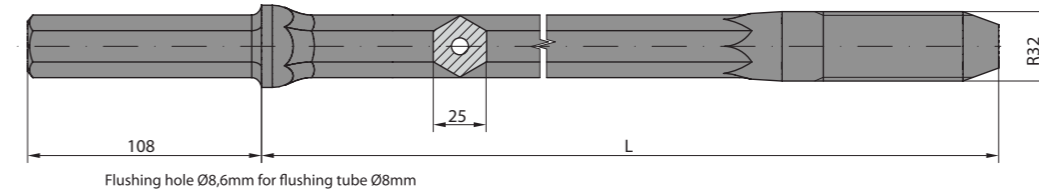


Cross bit, Retrac



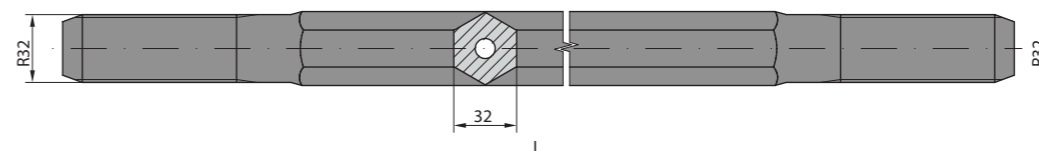
Diameter		Flushing Holes (mm)		Buttons (mm)		Weight	Model
		Side	Front	Gauge	Front		
mm	inch	No x Size	No x Size	No x Size	No x Size	kg	No
76	3	-	4 x 6	8 x 10	7 x 9	1,3	138351
76	3	-	4 x 6	8 x 10	7 x 9	1,3	186604
89	3 ½	-	4 x 6	8 x 12	7 x 10	1,5	150678
89	3 ½	-	4 x 6	8 x 12	7 x 10	1,5	104531
102	4	-	4 x 7	8 x 13	7 x 13	1,7	174024
102	4	-	4 x 7	8 x 13	7 x 13	1,7	126811
115	4 ½	-	4 x 7	8 x 14	7 x 13	2,0	174793
115	4 ½	-	4 x 7	8 x 14	7 x 13	2,0	122719
64	2 ½	-	2 x 6	8 x 9	4 x 8	2,3	117744
64	2 ½	-	2 x 6	8 x 9	4 x 8	2,3	144162
76	3	-	2 x 6	8 x 10	4 x 10	2,8	128101
76	3	-	2 x 6	8 x 10	4 x 10	2,8	166880
89	3 ½	-	2 x 6	8 x 10	6 x 10	3,6	173403
89	3 ½	-	2 x 6	8 x 10	6 x 10	3,6	134739
102	4	-	2 x 6	8 x 12	4 x 12	4,3	156923
102	4	-	2 x 6	8 x 12	4 x 12	4,3	110479
115	4 ½	-	2 x 6	8 x 12	6 x 12	5,8	122822
115	4 ½	-	2 x 6	8 x 12	6 x 12	5,8	105311
115	4 ½	-	2 x 6	8 x 12	6 x 12	4,8	145917
115	4 ½	-	2 x 6	8 x 12	6 x 12	4,8	177036
127	5	-	2 x 7	8 x 13	8 x 12	5,4	177769
127	5	-	2 x 7	8 x 13	8 x 12	5,4	133536
43	1 11/16	2 x 6	1 x 5	-	-	0,7	183220
45	1 ¾	2 x 6	1 x 5	-	-	0,7	181636
48	1 7/8	2 x 6	1 x 6	-	-	0,8	118856
51	2	2 x 6	1 x 6	-	-	0,8	116532
54	2 1/8	2 x 6	1 x 6	-	-	0,9	186188
45	1 ¾	2 x 6	1 x 5	-	-	1,1	130860
48	1 7/8	2 x 6	1 x 6	-	-	1,2	190213
51	2	2 x 6	1 x 6	-	-	1,3	190338
54	2 1/8	2 x 6	1 x 6	-	-	1,5	139367
57	2 ¼	2 x 6	1 x 6	-	-	1,7	107018
64	2 ½	2 x 6	1 x 6	-	-	2,6	194589
76	3	2 x 6	1 x 6	-	-	3,8	102586

Shank rod, Hex 25 - R32



Hex		Threads	Dimensions Lenght			Weight	Model
mm	inch		mm	ft	inch		
25	1	R32	610	2	-	3,0	270425
25	1	R32	760	2	6	3,5	228873
25	1	R32	1000	3	3 ½	4,5	242124
25	1	R32	1220	4	-	5,3	275934
25	1	R32	1600	5	3	6,8	290785
25	1	R32	1830	6	-	7,7	269433
25	1	R32	2435	8	-	10,0	215583
25	1	R32	3050	10	-	12,3	214007
25	1	R32	3660	12	-	14,8	247246

Drifter rod, R32 - Hex 32 - R32



Hex		Threads	Dimensions Lenght			Weight	Model
mm	inch		mm	ft	inch		
32	1 ¼	R32/R32	915	3	-	5,6	259959
32	1 ¼	R32/R32	1000	3	3 ½	6,2	293057
32	1 ¼	R32/R32	1220	4	-	7,6	285420
32	1 ¼	R32/R32	1525	5	-	9,5	247692
32	1 ¼	R32/R32	1830	6	-	11,5	287528
32	1 ¼	R32/R32	2435	8	-	15,3	200600
32	1 ¼	R32/R32	3050	10	-	19,3	298710
32	1 ¼	R32/R32	3660	12	-	23,2	220922
32	1 ¼	R32/R32	4305	14	1 ½	27,3	264041
32	1 ¼	R32/R32	4915	16	-	31,2	282838
32	1 ¼	R32/R32	5490	18	-	34,8	250986

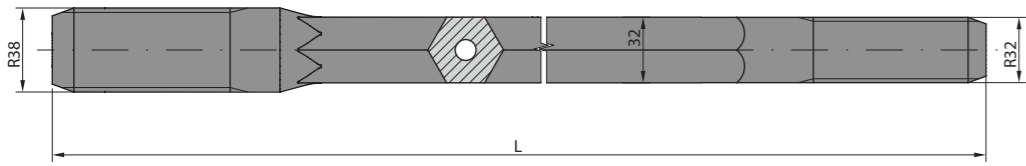
R-32 Rods



R-32 Rods

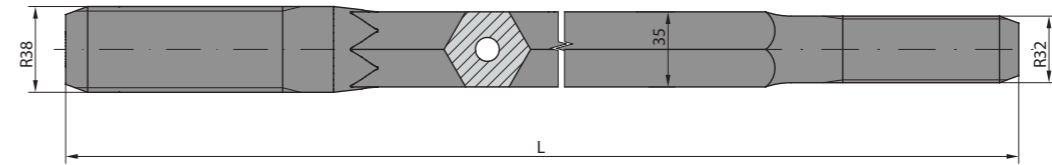


Drifter rod, R38 - Hex 32 - R32



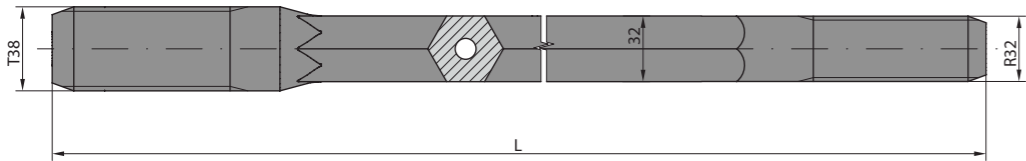
Hex		Threads	Dimensions Lenght			Weight kg	Model No
mm	inch		mm	ft	inch		
32	1 ¼	R38/R32	915	3	-	5,8	262030
32	1 ¼	R38/R32	1000	3	3 ½	6,4	229197
32	1 ¼	R38/R32	1220	4	-	7,8	244602
32	1 ¼	R38/R32	1525	5	-	9,7	209652
32	1 ¼	R38/R32	1830	6	-	11,7	207373
32	1 ¼	R38/R32	2435	8	-	15,5	254266
32	1 ¼	R38/R32	3050	10	-	19,5	248238
32	1 ¼	R38/R32	3660	12	-	23,4	209949
32	1 ¼	R38/R32	4305	14	1 ½	27,5	209019
32	1 ¼	R38/R32	4915	16	-	31,4	289472
32	1 ¼	R38/R32	5490	18	-	35,0	265122

Drifter rod, R38 - Hex 35 - R32



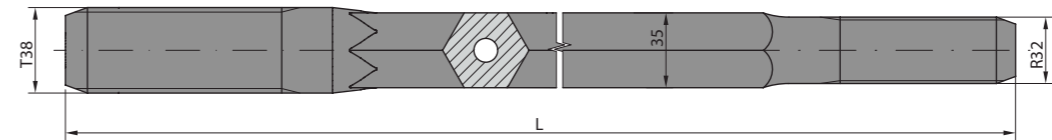
Hex		Threads	Dimensions Lenght			Weight kg	Model No
mm	inch		mm	ft	inch		
35	1 ¾	R38/R32	915	3	-	7,2	218440
35	1 ¾	R38/R32	1000	3	3 ½	7,9	289180
35	1 ¾	R38/R32	1220	4	-	9,6	273982
35	1 ¾	R38/R32	1525	5	-	12,0	290026
35	1 ¾	R38/R32	1830	6	-	14,4	288344
35	1 ¾	R38/R32	2435	8	-	19,2	284443
35	1 ¾	R38/R32	3050	10	-	24,0	259280
35	1 ¾	R38/R32	3660	12	-	28,8	227111
35	1 ¾	R38/R32	4305	14	-	33,9	214493
35	1 ¾	R38/R32	4915	16	1 ½	38,7	227265
35	1 ¾	R38/R32	5490	18	-	43,3	282038

Drifter rod, T38 - Hex 32 - R32



Hex		Threads	Dimensions Lenght			Weight kg	Model No
mm	inch		mm	ft	inch		
32	1 ¼	T38/R32	915	3	-	5,8	262998
32	1 ¼	T38/R32	1000	3	3 ½	6,4	255292
32	1 ¼	T38/R32	1220	4	-	7,8	252475
32	1 ¼	T38/R32	1525	5	-	9,7	229491
32	1 ¼	T38/R32	1830	6	-	11,7	285060
32	1 ¼	T38/R32	2435	8	-	15,5	256055
32	1 ¼	T38/R32	3050	10	-	19,5	270132
32	1 ¼	T38/R32	3660	12	-	23,4	263452
32	1 ¼	T38/R32	4305	14	1 ½	27,5	238941
32	1 ¼	T38/R32	4915	16	-	31,4	230467
32	1 ¼	T38/R32	5490	18	-	35,0	261090

Drifter rod, T38 - Hex 35 - R32



Hex		Threads	Dimensions Lenght			Weight kg	Model No
mm	inch		mm	ft	inch		
35	1 ¾	T38/R32	915	3	-	7,2	242397
35	1 ¾	T38/R32	1000	3	3 ½	7,9	209625
35	1 ¾	T38/R32	1220	4	-	9,6	232174
35	1 ¾	T38/R32	1525	5	-	12,0	255361
35	1 ¾	T38/R32	1830	6	-	14,4	215357
35	1 ¾	T38/R32	2435	8	-	19,2	252200
35	1 ¾	T38/R32	3050	10	-	24,0	290187
35	1 ¾	T38/R32	3660	12	-	28,8	262206
35	1 ¾	T38/R32	4305	14	1 ½	33,9	244858
35	1 ¾	T38/R32	4915	16	-	38,7	223809
35	1 ¾	T38/R32	5490	18	-	43,3	272327

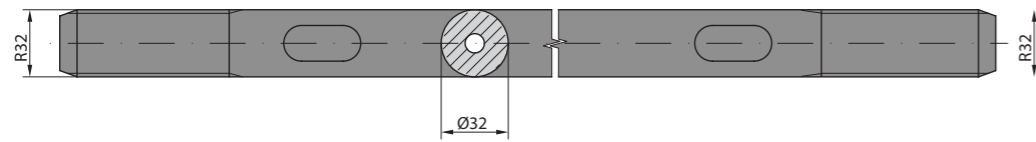
R-32 Rods



R-32 Rods

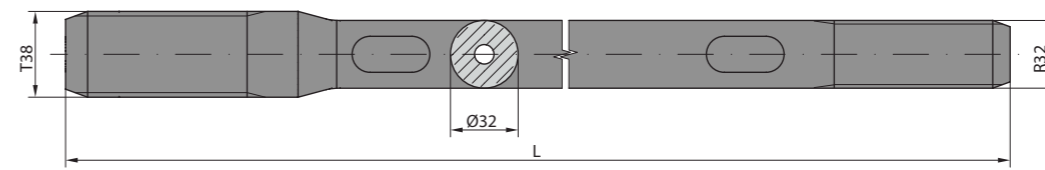


Drifter rod, R32 - Round 32 - R32



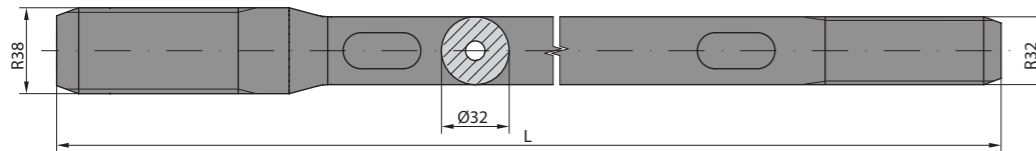
Hex		Threads	Dimensions Length			Weight kg	Model No
mm	inch		mm	ft	inch		
32	1 ¼	R32/R32	915	3	-	5,2	297386
32	1 ¼	R32/R32	1000	3	3 ½	5,7	229993
32	1 ¼	R32/R32	1220	4	-	7,0	219460
32	1 ¼	R32/R32	1525	5	-	8,8	244186
32	1 ¼	R32/R32	1830	6	-	10,5	299805
32	1 ¼	R32/R32	2435	8	-	14,1	297451
32	1 ¼	R32/R32	3050	10	-	17,7	288112
32	1 ¼	R32/R32	3660	12	-	21,3	228981
32	1 ¼	R32/R32	4305	14	1 ½	25,1	243886
32	1 ¼	R32/R32	4915	16	-	28,7	235102
32	1 ¼	R32/R32	5490	18	-	32,0	272072

Drifter rod, T38 - Round 32 - R32



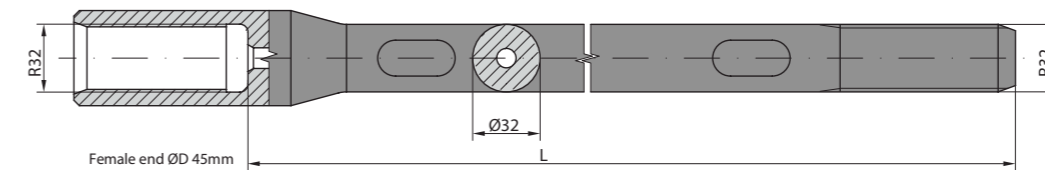
Hex		Threads	Dimensions Length			Weight kg	Model No
mm	inch		mm	ft	inch		
32	1 ¼	T38/R32	915	3	-	5,3	297987
32	1 ¼	T38/R32	1000	3	3 ½	5,8	206736
32	1 ¼	T38/R32	1220	4	-	7,1	295614
32	1 ¼	T38/R32	1525	5	-	8,9	213405
32	1 ¼	T38/R32	1830	6	-	10,6	209048
32	1 ¼	T38/R32	2435	8	-	14,2	276755
32	1 ¼	T38/R32	3050	10	-	17,8	238797
32	1 ¼	T38/R32	3660	12	-	21,4	269245
32	1 ¼	T38/R32	4305	14	-	25,2	285777
32	1 ¼	T38/R32	4915	16	1 ½	28,8	256986
32	1 ¼	T38/R32	5490	18	-	32,1	285637

Drifter rod, R38 - Round 32 - R32



Hex		Threads	Dimensions Length			Weight kg	Model No
mm	inch		mm	ft	inch		
32	1 ¼	T38/R32	915	3	-	5,3	287080
32	1 ¼	T38/R32	1000	3	3 ½	5,8	277581
32	1 ¼	T38/R32	1220	4	-	7,1	288902
32	1 ¼	T38/R32	1525	5	-	8,9	228198
32	1 ¼	T38/R32	1830	6	-	10,6	224266
32	1 ¼	T38/R32	2435	8	-	14,2	223518
32	1 ¼	T38/R32	3050	10	-	17,8	260596
32	1 ¼	T38/R32	3660	12	-	21,4	269199
32	1 ¼	T38/R32	4305	14	1 ½	25,2	276994
32	1 ¼	T38/R32	4915	16	-	28,8	289464
32	1 ¼	T38/R32	5490	18	-	32,1	286161

MF - rod, R32 - Round 32 - R32

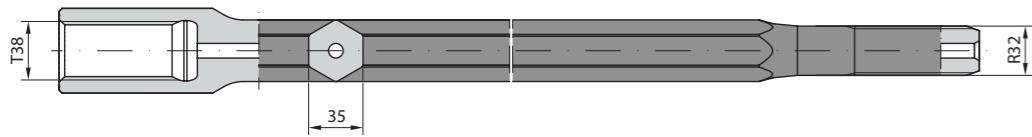


Hex		Threads	Dimensions Length			Weight kg	Model No
mm	inch		mm	ft	inch		
32	1 ¼	R32/R32	915	3	-	5,4	297316
32	1 ¼	R32/R32	1000	3	3 ½	5,9	214855
32	1 ¼	R32/R32	1220	4	-	7,2	215545
32	1 ¼	R32/R32	1525	5	-	9,0	299884
32	1 ¼	R32/R32	1830	6	-	10,7	222473
32	1 ¼	R32/R32	2435	8	-	14,3	239906
32	1 ¼	R32/R32	3050	10	-	17,9	234329
32	1 ¼	R32/R32	3660	12	-	21,5	222562
32	1 ¼	R32/R32	4305	14	1 ½	25,3	248300
32	1 ¼	R32/R32	4915	16	-	28,9	236448
32	1 ¼	R32/R32	5490	18	-	32,2	206340

R-28 Rods, Couplings sleeve, Bit adapter

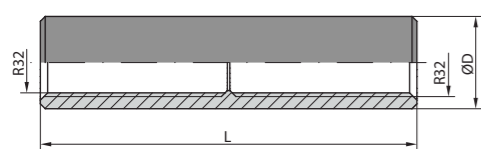


MF - rod, T38 - Hex 35 - R32



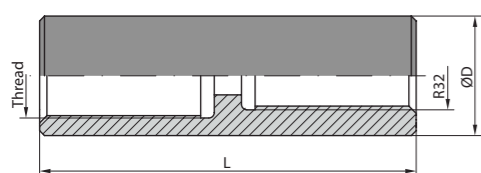
Hex		Threads	Dimensions Length			Weight	Model
mm	inch		mm	ft	inch		
35	1 3/8	T38/R32	915	3	-	7,4	286729
35	1 3/8	T38/R32	1000	3	3 1/2	8,1	265222
35	1 3/8	T38/R32	1220	4	-	9,8	234769
35	1 3/8	T38/R32	1525	5	-	12,2	209627
35	1 3/8	T38/R32	1830	6	-	14,7	244446
35	1 3/8	T38/R32	2435	8	-	19,4	286462
35	1 3/8	T38/R32	3050	10	-	24,3	297868
35	1 3/8	T38/R32	3660	12	-	29,1	219856
35	1 3/8	T38/R32	4305	14	1 1/2	34,2	280460
39,05	1 3/8	T38/R32	4915	16	-	39,0	243574

Coupling sleeve R32



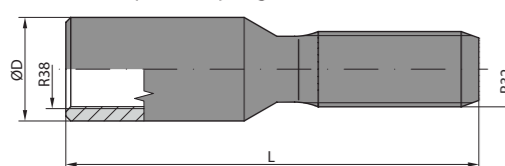
Diameter		Threads	Length		Weight	Model
mm	inch		mm	inch		
44	1 47/64	R32/R32	150	5 29/32	0,9	367831

Coupling sleeve



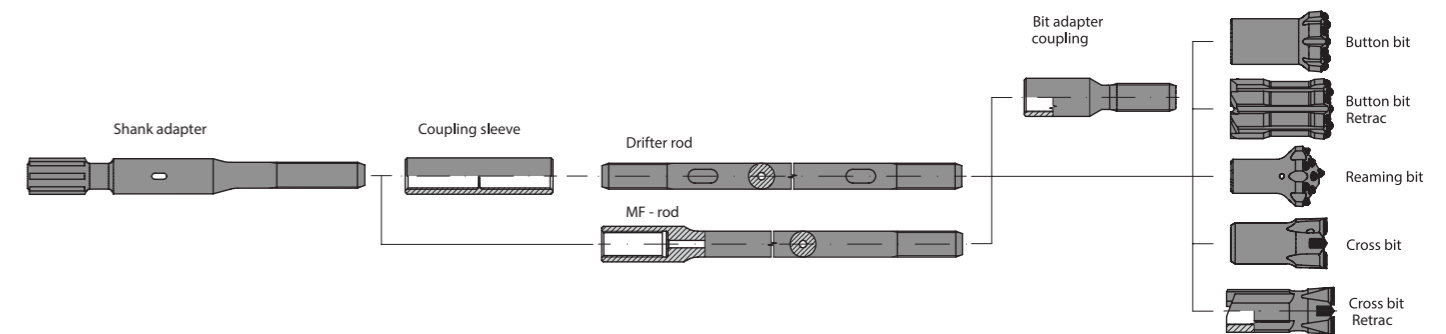
Diameter		Threads	Length		Weight	Model
mm	inch		mm	inch		
55	2 5/32	R38/R32	170	6 3/4	2,1	309587
55	2 5/32	T38/R32	185	7 9/32	2,3	373059
62	2 1/2	T45/R32	185	7 9/32	3,3	302896

Bit adapter coupling

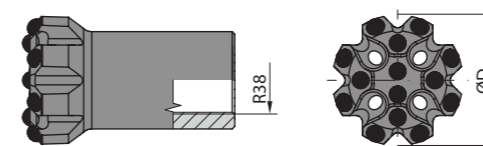


Diameter		Threads	Length		Weight	Model
mm	inch		mm	inch		
55	2 5/32	R38/R32	230	9	2,4	309355

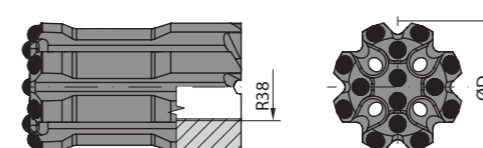
R-38 Bits



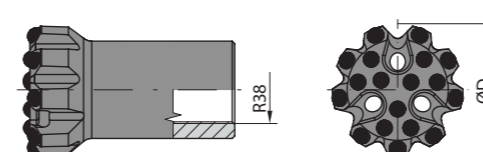
Button bit, Drop center



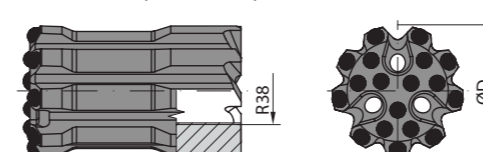
Button bit, Drop center, Retrac



Button bit, Flat face



Button bit, Flat face, Retrac



Diameter		Flushing Holes (mm)		Buttons (mm)		Weight	Model
		Side	Front	Gauge	Front		
mm	inch	No x Size	No x Size	No x Size	No x Size	kg	No
64	2 1/2	-	4 x 8	8 x 10	5 x 9	1,7	105459
64	2 1/2	-	4 x 8	8 x 10	5 x 9	1,7	141573
70	2 3/4	-	4 x 8	8 x 11	5 x 10	1,8	115913
70	2 3/4	-	4 x 8	8 x 11	5 x 10	1,8	167214
76	3	-	4 x 8	8 x 12	5 x 11	2,4	105384
76	3	-	4 x 8	8 x 12	5 x 11	2,4	168552
89	3 1/2	-	4 x 9	8 x 13	5 x 12	3,5	172937
89	3 1/2	-	4 x 9	8 x 13	5 x 12	3,5	120455
102	4	-	4 x 9	8 x 14	6 x 13	4,2	140603
102	4	-	4 x 9	8 x 14	6 x 13	4,2	167081
64	2 1/2	-	4 x 8	8 x 10	5 x 9	2,2	185258
64	2 1/2	-	4 x 8	8 x 10	5 x 9	2,2	183733
70	2 3/4	-	4 x 8	8 x 11	5 x 10	3,0	160487
70	2 3/4	-	4 x 8	8 x 11	5 x 10	3,0	194749
76	3	-	4 x 8	8 x 12	5 x 11	3,6	188114
76	3	-	4 x 8	8 x 12	5 x 11	3,6	189692
89	3 1/2	-	4 x 9	8 x 13	5 x 12	5,1	112163
89	3 1/2	-	4 x 9	8 x 13	5 x 12	5,1	138989
102	4	-	4 x 9	8 x 14	6 x 13	7,2	150787
102	4	-	4 x 9	8 x 14	6 x 13	7,2	149608
76	3	-	3 x 9	9 x 11	8 x 10	2,4	121362
76	3	-	3 x 9	9 x 11	8 x 10	2,4	142274
89	3 1/2	-	3 x 9	9 x 12	9 x 11	3,5	145640
89	3 1/2	-	3 x 9	9 x 12	9 x 11	3,5	196742
102	4	-	3 x 9	9 x 13	9 x 12	4,2	111219
102	4	-	3 x 9	9 x 13	9 x 12	4,2	124063
76	3	-	3 x 9	9 x 11	8 x 10	3,6	151185
76	3	-	3 x 9	9 x 11	8 x 10	3,6	183407
89	3 1/2	-	3 x 9	9 x 12	9 x 11	5,1	108666
89	3 1/2	-	3 x 9	9 x 12	9 x 11	5,1	173273
102	4	-	3 x 9	9 x 13	9 x 12	7,2	100214
102	4	-	3 x 9	9 x 13	9 x 12	7,2	106344

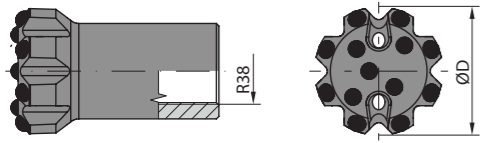
R-38 Bits



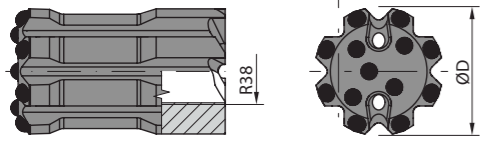
R-28 Bits, Rods



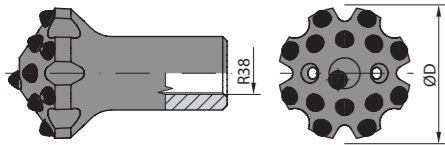
Button bit, Heavy Duty



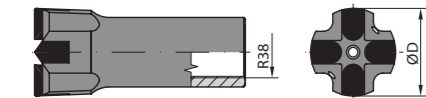
Button bit, Retrac, Heavy Duty



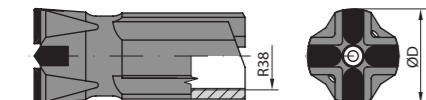
Reaming bit,



Cross bit

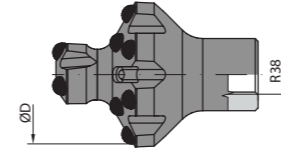


Cross bit, Retrac, Type D52

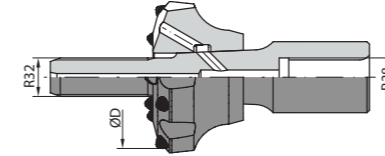


Diameter		Flushing Holes (mm)		Buttons (mm)		Weight	Model
mm	inch	No x Size	No x Size	Gauge	Front		
64	2 1/2	-	2 x 8	8 x 11	4 x 10	1,7	190384
70	2 3/4	-	2 x 9	8 x 12	4 x 11	1,8	106960
76	3	-	2 x 10	8 x 12	4 x 12	2,4	157166
89	3 1/2	-	2 x 11	8 x 13	5 x 12	3,5	103514
102	4	-	2 x 11	8 x 14	6 x 13	4,2	175601
64	2 1/2	-	2 x 8	8 x 11	4 x 10	2,2	120047
70	2 3/4	-	2 x 9	8 x 12	4 x 11	3,0	128235
76	3	-	2 x 10	8 x 12	4 x 12	3,6	161359
89	3 1/2	-	2 x 11	8 x 13	5 x 12	5,1	185034
102	4	-	2 x 11	8 x 14	6 x 13	7,2	109755
76	3	-	2 x 9	8 x 12	7 x 11	2,6	140824
76	3	-	2 x 9	8 x 12	7 x 11	2,6	171394
89	3 1/2	-	2 x 9	8 x 12	7 x 12	3,7	127481
89	3 1/2	-	2 x 9	8 x 12	7 x 12	3,7	182693
102	4	-	2 x 10	8 x 13	9 x 13	4,9	137281
102	4	-	2 x 10	8 x 13	9 x 13	4,9	155121
115	4 1/2	-	2 x 11	8 x 14	9 x 13	6,5	170836
115	4 1/2	-	2 x 11	8 x 14	9 x 13	6,5	133487
127	5	-	2 x 11	8 x 15	9 x 14	7,9	177804
127	5	-	2 x 11	8 x 15	9 x 14	7,9	108970
64	2 1/2	2 x 7	1 x 8	-	-	1,8	183667
76	3	2 x 8	1 x 10	-	-	2,4	130796
89	3 1/2	2 x 9	1 x 10	-	-	3,5	189826
76	1 3/4	2 x 8	1 x 10	-	-	3,6	122880
89	1 7/8	2 x 9	1 x 10	-	-	5,1	151322
102	2	2 x 9	1 x 11	-	-	7,2	169434

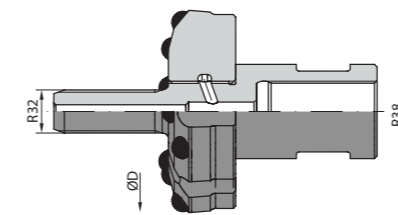
Reaming bit



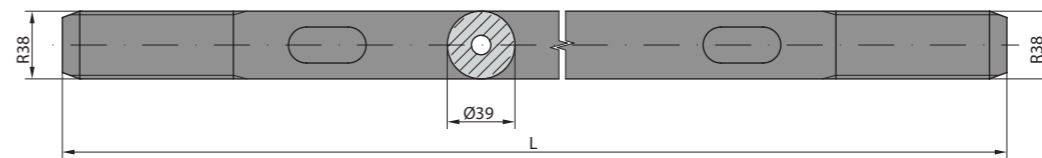
Reaming equipment



Reaming equipment



Drifter rod, R38 - Round 39 - R38



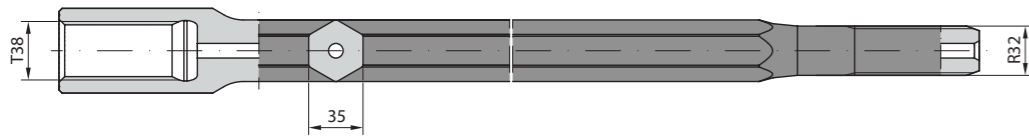
Diameter		Flushing Holes (mm)		Buttons (mm)		Weight	Model
mm	inch	Side	Front	Gauge	Front		
89	3 1/2	-	4 x 6	8 x 12	7 x 10	2,7	184720
89	3 1/2	-	4 x 6	8 x 12	7 x 10	2,7	157948
102	4	-	4 x 7	8 x 13	7 x 13	3,2	112326
102	4	-	4 x 7	8 x 13	7 x 13	3,2	168670
115	4 1/2	-	4 x 7	8 x 14	7 x 13	4,0	134192
115	4 1/2	-	4 x 7	8 x 14	7 x 13	4,0	197275
89	3 1/2	-	2 x 6	8 x 10	6 x 10	3,8	199973
89	3 1/2	-	2 x 6	8 x 10	6 x 10	3,8	191702
102	4	-	2 x 7	8 x 12	4 x 12	4,5	131399
102	4	-	2 x 7	8 x 12	4 x 12	4,5	100285
115	4 1/2	-	2 x 7	8 x 12	6 x 12	5,1	137704
115	4 1/2	-	2 x 7	8 x 12	6 x 12	5,1	110552
115	4 1/2	-	2 x 7	8 x 12	6 x 12	5,1	135197
115	4 1/2	-	2 x 7	8 x 12	6 x 12	5,1	154212
127	5	-	2 x 8	8 x 13	8 x 13	5,7	111100
127	5	-	2 x 8	8 x 13	8 x 13	5,7	150124

Hex		Threads	Dimensions Lenght			Weight	Model
mm	inch		mm	ft	inch		
39	1 1/2	R38/R38	915	3	-	7,2	215491
39	1 1/2	R38/R38	1000	3	3 1/2	7,9	222293
39	1 1/2	R38/R38	1220	4	-	9,8	225731
39	1 1/2	R38/R38	1525	5	-	12,2	201416
39	1 1/2	R38/R38	1830	6	-	14,7	216257
39	1 1/2	R38/R38	2435	8	-	19,6	283905
39	1 1/2	R38/R38	3050	10	-	24,5	204022
39	1 1/2	R38/R38	3660	12	-	29,5	291655
39	1 1/2	R38/R38	4305	14	1 1/2	34,7	238131
39	1 1/2	R38/R38	4915	16	-	39,6	283075
39	1 1/2	R38/R38	5490	18	-	44,4	231944

R-38 Rods

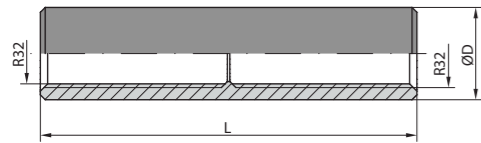


MF - rod, T38 - Hex 35 - R32



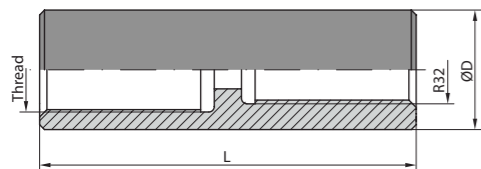
Hex		Threads	Dimensions Length			Weight kg	Model No
mm	inch		mm	ft	inch		
39	1 ½	R38/R38	915	3	-	7,9	218956
39	1 ½	R38/R38	1000	3	3 ½	8,6	246348
39	1 ½	R38/R38	1220	4	-	10,4	256160
39	1 ½	R38/R38	1525	5	-	12,8	214961
39	1 ½	R38/R38	1830	6	-	15,3	255699
39	1 ½	R38/R38	2435	8	-	20,2	273397
39	1 ½	R38/R38	3050	10	-	25,1	228157
39	1 ½	R38/R38	3660	12	-	30,1	232110
39	1 ½	R38/R38	4305	14	1 ½	35,3	273153
39	1 ½	R38/R38	4915	16	-	40,2	274389
39	1 ½	R38/R38	5490	18	-	44,9	269893

Coupling sleeve R32



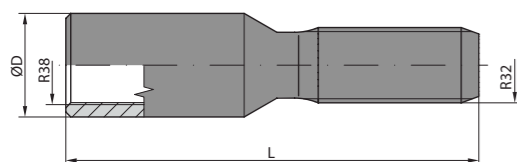
Diameter		Threads	Length		Weight kg	Model No
mm	inch		mm	inch		
55	2 5/32	R38/R38	160	6 5/16	1,6	384430

Coupling sleeve



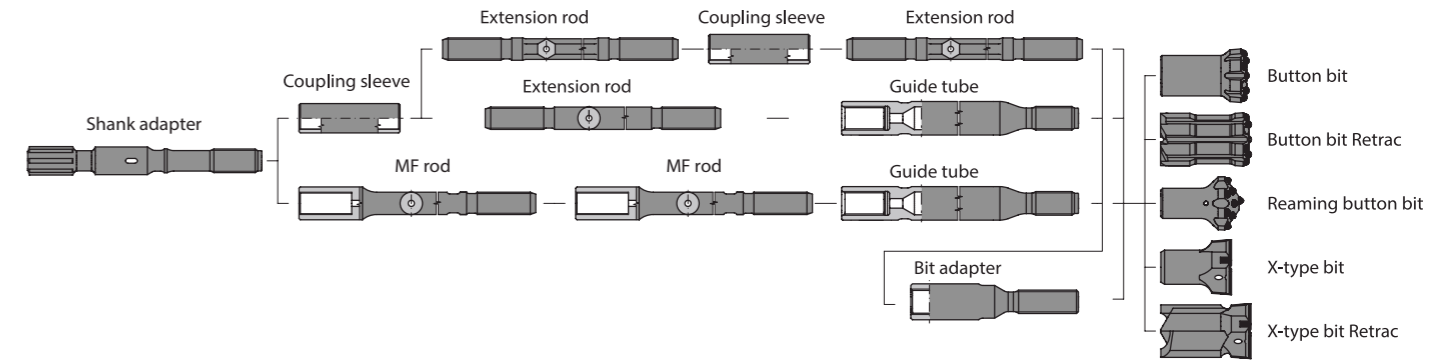
Diameter		Threads	Length		Weight kg	Model No
mm	inch		mm	inch		
55	2 5/32	T38/R38	190	7 ½	2,2	389567
62	2 ½	T45/R38	190	7 ½	3,2	343781

Bit adapter coupling



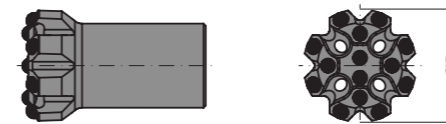
Diameter		Threads	Length		Weight kg	Model No
mm	inch		mm	inch		
55	2 5/32	T38/R38	200	7 7/8	2,8	338273

T38 Bits



Diameter		Flushing Holes (mm)		Buttons (mm)		Weight kg	Model No
		Side	Front	Gauge	Front		
mm	inch	No x Size	No x Size	No x Size	No x Size		
64	2 ½	-	4 x 8	8 x 10	5 x 9	1,8	130304
64	2 ½	-	4 x 8	8 x 10	5 x 9	1,8	194458
70	2 ¾	-	4 x 8	8 x 11	5 x 10	2,2	153106
70	2 ¾	-	4 x 8	8 x 11	5 x 10	2,2	136118
76	3	-	4 x 8	8 x 12	5 x 11	2,5	147531
76	3	-	4 x 8	8 x 12	5 x 11	2,5	113439
89	3 ½	-	4 x 8	8 x 13	5 x 12	3,4	114175
89	3 ½	-	4 x 8	8 x 13	5 x 12	3,4	105491
102	4	-	4 x 8	8 x 13	6 x 13	4,7	110634
102	4	-	4 x 8	8 x 13	6 x 13	4,7	105634
R - Spherical S - Semi Ballistic							

Button bit – DROP CENTER



Button bit – DROP CENTER – RETRAC



Diameter		Flushing Holes (mm)		Buttons (mm)		Weight kg	Model No
		Side	Front	Gauge	Front		
mm	inch	No x Size	No x Size	No x Size	No x Size		
64	2 ½	-	4 x 8	8 x 10	5 x 9	2,2	126797
64	2 ½	-	4 x 8	8 x 10	5 x 9	2,2	188831
70	2 ¾	-	4 x 8	8 x 11	5 x 10	2,8	153025
70	2 ¾	-	4 x 8	8 x 11	5 x 10	2,8	141166
76	3	-	4 x 8	8 x 12	5 x 11	3,6	135616
76	3	-	4 x 8	8 x 12	5 x 11	3,6	145959
89	3 ½	-	4 x 9	8 x 13	5 x 12	5,5	124214
89	3 ½	-	4 x 9	8 x 13	5 x 12	5,5	148070
102	4	-	4 x 9	8 x 13	6 x 13	7,3	127955
102	4	-	4 x 9	8 x 13	6 x 13	7,3	128057
R - Spherical S - Semi Ballistic							

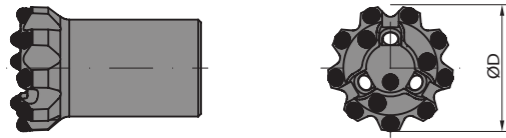
T38 Bits



T38 Bits



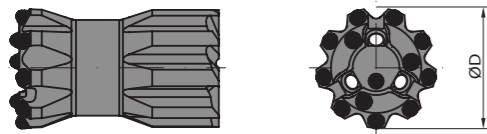
Button bit – DROP CENTER



Diameter		Flushing Holes (mm)		Buttons (mm)		Weight	Model
mm	inch	Side No x Size	Front No x Size	Gauge No x Size	Front No x Size		
64	2 ½	-	3 x 8	9 x 10	4 x 9	1,8	134220
64	2 ½	-	3 x 8	9 x 10	4 x 9	1,8	165954
70	2 ¾	-	3 x 8	9 x 11	4 x 10	2,1	135454
70	2 ¾	-	3 x 8	9 x 11	4 x 10	2,1	108223
76	3	-	3 x 9	9 x 12	4 x 10	2,4	170956
76	3	-	3 x 9	9 x 12	4 x 10	2,4	157378
89	3 ½	-	3 x 10	9 x 13	4 x 11	3,3	187054
89	3 ½	-	3 x 10	9 x 13	4 x 11	3,3	107706
102	4	-	3 x 10	9 x 14	5 x 12	3,3	125047
102	4	-	3 x 10	9 x 14	5 x 12	3,3	182128

R - Spherical S - Semi Ballistic

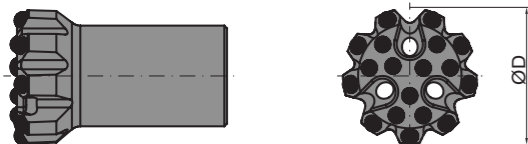
Button bit – DROP CENTER – RETRAC



Diameter		Flushing Holes (mm)		Buttons (mm)		Weight	Model
mm	inch	Side No x Size	Front No x Size	Gauge No x Size	Front No x Size		
64	2 ½	-	3 x 8	9 x 10	4 x 9	2,1	171499
64	2 ½	-	3 x 8	9 x 10	4 x 9	2,1	153863
70	2 ¾	-	3 x 8	9 x 11	4 x 10	2,6	135213
70	2 ¾	-	3 x 8	9 x 11	4 x 10	2,6	195607
76	3	-	3 x 9	9 x 12	4 x 10	3,4	162040
76	3	-	3 x 9	9 x 12	4 x 10	3,4	115413
89	3 ½	-	3 x 10	9 x 13	4 x 11	4,9	183868
89	3 ½	-	3 x 10	9 x 13	4 x 11	4,9	116687
102	4	-	3 x 10	9 x 14	5 x 12	6,7	102095
102	4	-	3 x 10	9 x 14	5 x 12	6,7	135612

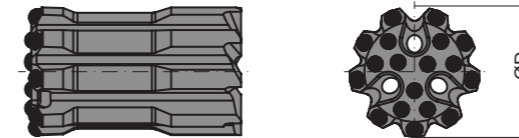
R - Spherical S - Semi Ballistic

Button bit - FLAT FACE



Diameter		Flushing Holes (mm)		Buttons (mm)		Weight	Model
mm	inch	Side No x Size	Front No x Size	Gauge No x Size	Front No x Size		
64	2 ½	-	3 x 8	9 x 10	8 x 8	1,9	143653
64	2 ½	-	3 x 8	9 x 10	8 x 8	1,9	141335
76	3	-	3 x 9	9 x 12	8 x 10	2,5	180922
76	3	-	3 x 9	9 x 12	8 x 10	2,5	177443
89	3 ½	-	3 x 10	9 x 13	8 x 11	3,5	179191
89	3 ½	-	3 x 10	9 x 13	8 x 11	3,5	103221
102	4	-	3 x 10	9 x 14	8 x 12	4,9	138287
102	4	-	3 x 10	9 x 14	8 x 12	4,9	117760

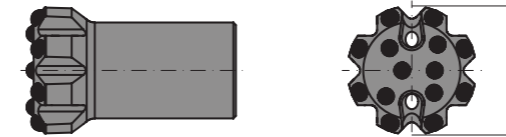
Button bit – FLAT FACE – RETRAC



Diameter		Flushing Holes (mm)		Buttons (mm)		Weight	Model
mm	inch	Side No x Size	Front No x Size	Gauge No x Size	Front No x Size		
64	2 ½	-	3 x 8	9 x 10	8 x 8	2,4	168863
64	2 ½	-	3 x 8	9 x 10	8 x 8	2,4	100886
76	3	-	3 x 9	9 x 12	8 x 10	3,7	175436
76	3	-	3 x 9	9 x 12	8 x 10	3,7	115583
89	3 ½	-	3 x 10	9 x 13	9 x 11	5,6	118186
89	3 ½	-	3 x 10	9 x 13	9 x 11	5,6	142399
102	4	-	3 x 10	9 x 14	9 x 12	7,4	105370
102	4	-	3 x 10	9 x 14	9 x 12	7,4	148306

R - Spherical S - Semi Ballistic

Button bit – FLAT FACE – Heavy Duty



Diameter		Flushing Holes (mm)		Buttons (mm)		Weight	Model
mm	inch	Side No x Size	Front No x Size	Gauge No x Size	Front No x Size		
64	2 ½	-	2 x 9	8 x 11	4 x 10	1,9	199471
70	2 ¾	-	2 x 9	8 x 12	4 x 11	2,3	189285
76	3	-	2 x 10	8 x 13	4 x 12	2,5	191972
89	3 ½	-	2 x 11	8 x 14	5 x 13	3,6	100610
102	4	-	2 x 11	8 x 15	6 x 14	5,0	141195

R - Spherical

Button bit – FLAT FACE – Heavy Duty - RETRAC



Diameter		Flushing Holes (mm)		Buttons (mm)		Weight	Model
mm	inch	Side No x Size	Front No x Size	Gauge No x Size	Front No x Size		
64	2 ½	-	2 x 9	8 x 11	4 x 10	2,4	126156
70	2 ¾	-	2 x 9	8 x 12	4 x 11	3,1	147473
76	3	-	2 x 10	8 x 13	4 x 12	3,7	117571
89	3 ½	-	2 x 11	8 x 14	5 x 13	5,5	140054
102	4	-	2 x 11	8 x 15	6 x 14	7,4	155649

R - Spherical

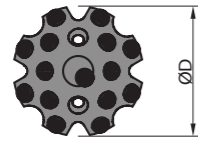
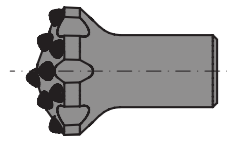
BENCH & PRODUCTION & DRILLING

MeetThePower

Adding value to your business by using high-performance rock drilling equipment produced by Fms Grup of high quality. Unlike products that wear quickly and let you down, the raw materials used in Fms Group Drilling equipment are pure Swedish steel. In addition to the raw material quality, it accelerates your workflow and minimizes consumable costs thanks to the performance of rock drilling equipment obtained with affordable costs. Discover the power of FMS now

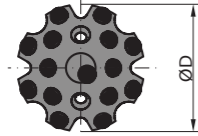
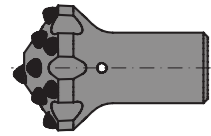


Button bit



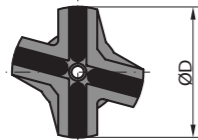
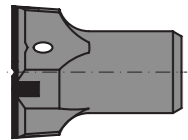
Diameter		Flushing Holes (mm)		Buttons (mm)		Weight	Model
mm	inch	Side	Front	Gauge	Front		
70	2 ¾	-	2 x 8	8 x 11	5 x 10	2,3	188012
76	3	-	2 x 9	8 x 12	6 x 11	2,5	133378
89	3 ½	-	2 x 9	8 x 13	6 x 12	3,6	163981
102	4	-	2 x 10	8 x 13	7 x 12	5,0	115073
R - Spherical							

Reaming button bit



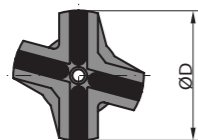
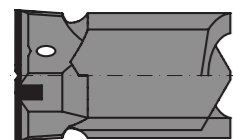
Diameter		Flushing Holes (mm)		Buttons (mm)		Weight	Model
mm	inch	Side	Front	Gauge	Front		
115	4 ½	1 x 7	3 x 7	9 x 13	8 x 12	6,5	170905
127	5	1 x 7,5	3 x 7,5	9 x 14	9 x 13	7,9	141821
R - Spherical							

Cross X-type bit



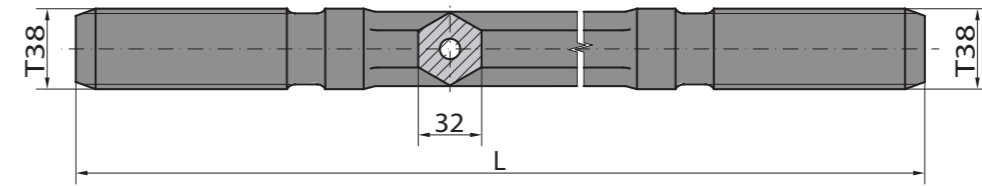
Diameter		Flushing Holes (mm)		Buttons (mm)		Weight	Model
mm	inch	Side	Front	Gauge	Front		
64	2 ½	2 x 7	1 x 8	-	-	1,9	136881
76	3	2 x 8	1 x 10	-	-	2,5	192517
89	3 ½	2 x 9	1 x 10	-	-	3,6	198117

Cross X-type bit – RETRAC



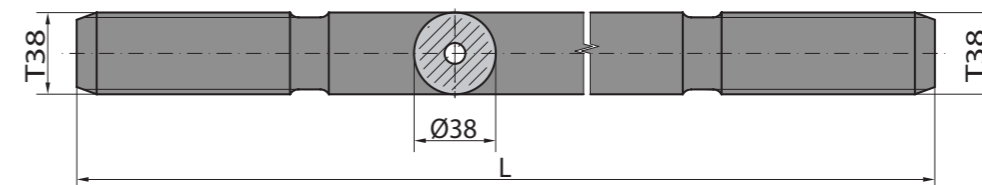
Diameter		Flushing Holes (mm)		Buttons (mm)		Weight	Model
mm	inch	Side	Front	Gauge	Front		
76	3	2 x 7	1 x 8	-	-	3,7	181357
89	3 ½	2 x 8	1 x 10	-	-	5,5	167182
102	4	2 x 9	1 x 10	-	-	7,4	175383

Hex rods



Hex		Threads	Dimensions Length			Weight	Model
mm	inch		mm	ft	inch		
32	1 ¼	T38/T38	915	3	-	6,2	229157
32	1 ¼	T38/T38	1220	4	-	7,9	240875
32	1 ¼	T38/T38	1525	5	-	9,8	204773
32	1 ¼	T38/T38	1830	6	-	11,8	292688
32	1 ¼	T38/T38	2165	7	-	13,9	242228
32	1 ¼	T38/T38	2435	8	-	15,6	258528
32	1 ¼	T38/T38	3050	10	-	19,5	275826
32	1 ¼	T38/T38	3660	12	-	23,4	266263
32	1 ¼	T38/T38	4265	14	-	27,3	210383
32	1 ¼	T38/T38	4915	16	-	31,4	268684
32	1 ¼	T38/T38	5490	18	-	35,1	234473
32	1 ¼	T38/T38	6100	20	-	39,0	233208
Flushing hole φ 16 mm							

Extension rods

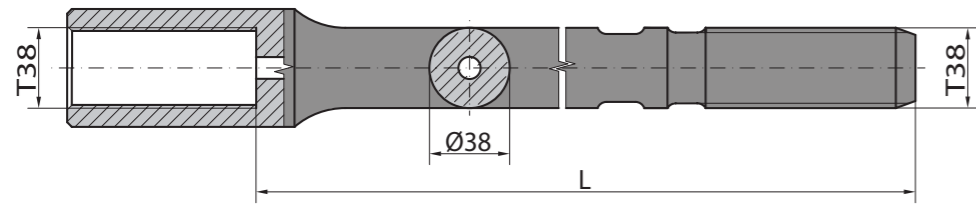


Hex		Threads	Dimensions Length			Weight	Model
mm	inch		mm	ft	inch		
38	1 ½	T38/T38	915	3	-	7,2	232415
38	1 ½	T38/T38	1220	4	-	9,6	292069
38	1 ½	T38/T38	1525	5	-	12,0	294524
38	1 ½	T38/T38	1830	6	-	14,4	263920
38	1 ½	T38/T38	2165	7	-		292296
38	1 ½	T38/T38	2435	8	-	19,2	285151
38	1 ½	T38/T38	3050	10	-	24,0	246974
38	1 ½	T38/T38	3660	12	-	28,8	219644
38	1 ½	T38/T38	4265	14	-	33,9	216588
38	1 ½	T38/T38	4915	16	-	38,7	227899
38	1 ½	T38/T38	5490	18	-	43,3	255597
38	1 ½	T38/T38	6100	20	-	48,9	207217
Flushing hole φ 14,5 mm							

T38 Rods

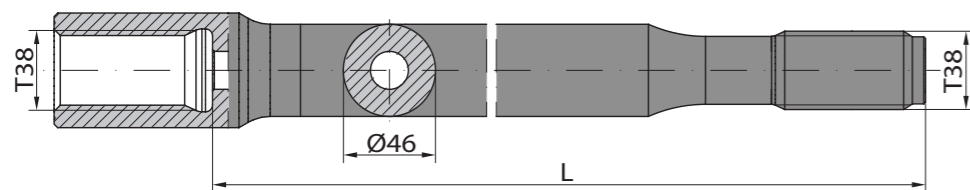


Speed rods / M-F rods



Hex		Threads	Dimensions Length			Weight kg	Model No
mm	inch		mm	ft	inch		
38	1 ½	T38/T38	915	3	-	8,5	271355
38	1 ½	T38/T38	1220	4	-	10,9	239335
38	1 ½	T38/T38	1525	5	-	13,4	238762
38	1 ½	T38/T38	1830	6	-	15,9	256249
38	1 ½	T38/T38	2165	7	-	18,6	287642
38	1 ½	T38/T38	2435	8	-	20,7	233508
38	1 ½	T38/T38	3050	10	-	25,7	262941
38	1 ½	T38/T38	3660	12	-	30,6	278651
38	1 ½	T38/T38	4265	14	-	35,5	269524
38	1 ½	T38/T38	4915	16	-	40,8	241340
38	1 ½	T38/T38	5490	18	-	45,4	298536
38	1 ½	T38/T38	6100	20	-	50,4	251855
Flushing hole ϕ 14,5 mm, Female end ϕ 56 mm							

Guide rods / M-F rods

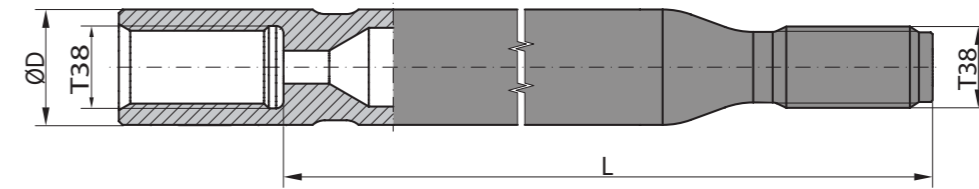


Hex		Threads	Dimensions Length			Weight kg	Model No
mm	inch		mm	ft	inch		
46	1 ¾	T38/T38	3050	10	-	34,4	293697
46	1 ¾	T38/T38	3660	12	-	41,2	216831
46	1 ¾	T38/T38	4265	14	-	48,0	222189
Flushing hole ϕ 17 mm, Female end ϕ 56 mm							

T38 Rods

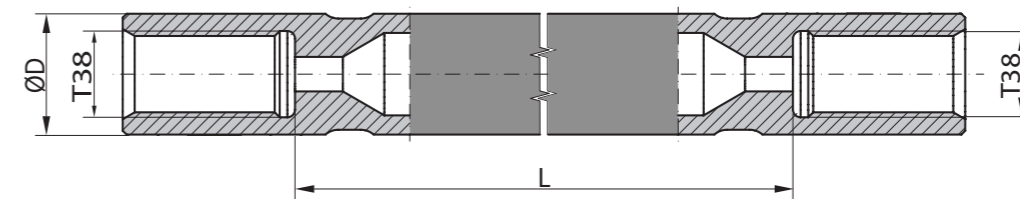


Guide tube rods



Diameter		Threads	Length			Weight kg	Model No
mm	inch		mm	ft	inch		
56	2 ¼	T38/T38	1525	5	-	18,7	268507
56	2 ¼	T38/T38	1830	6	-	22,2	250236
56	2 ¼	T38/T38	3050	10	-	36,0	243878
56	2 ¼	T38/T38	3660	12	-	42,9	276359
56	2 ¼	T38/T38	3660	12	-	49,4	220308

Guide tube rods

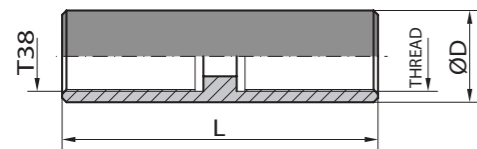


Diameter		Threads	Length			Weight kg	Model No
mm	inch		mm	ft	inch		
56	2 ¼	T38/T38	1525	5	-	19,5	210778
56	2 ¼	T38/T38	1830	6	-	23,0	215689
56	2 ¼	T38/T38	3050	10	-	36,8	250833
56	2 ¼	T38/T38	3660	12	-	43,7	258597
56	2 ¼	T38/T38	3660	12	-	52,4	247212

T38 Couplings

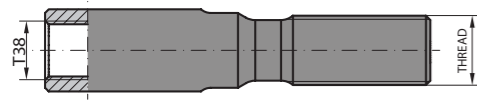


Full bridge



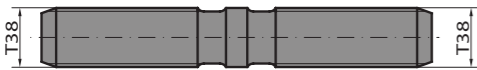
Diameter		Threads	Length		Weight	Model No
mm	inch		mm	inch		
55	2 ¼	T38/R32	185	7	2,3	338273
55	2 ¼	T38/T38	210	8 ¼	2,6	327187

M-F adapters



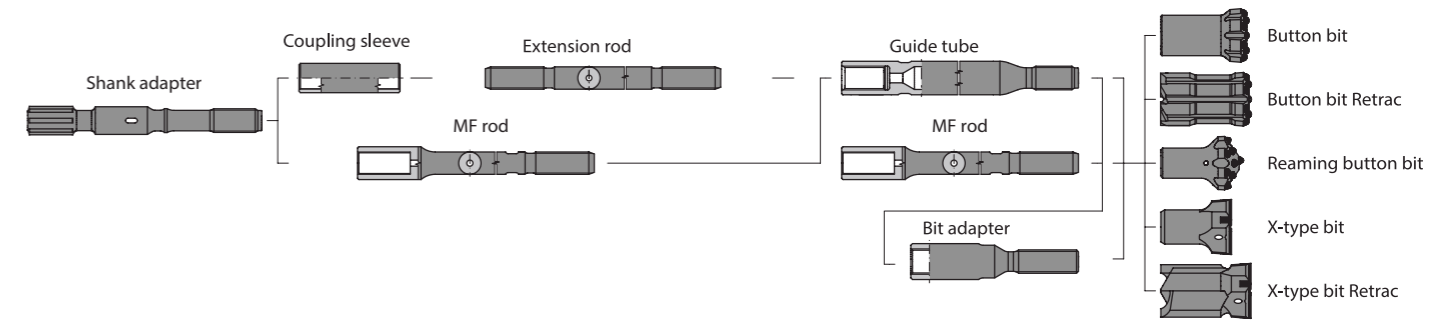
Threads	Length		Weight	Model
	mm	inch		
female/male				
T38/R32	240	9 ½	2,4	389755
T38/T45	275	10 ¾	3,2	399626

M-M adapters

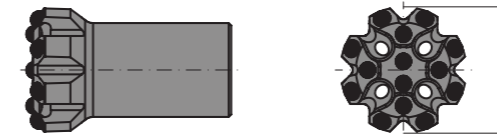


Threads	Length		Weight	Model
	mm	inch		
female/male				
T38/T38	220	8 ¾	1,6	359351

T45 Bits



Button bit – DROP CENTER



Diameter		Flushing Holes (mm)		Buttons (mm)		Weight	Model
		Side	Front	Gauge	Front		
mm	inch	No x Size	No x Size	No x Size	No x Size	kg	No
70	2 ¾	-	4 x 8	8 x 11	5 x 10	2,4	179442
70	2 ¾	-	4 x 8	8 x 11	5 x 10	2,4	101686
76	3	-	4 x 8	8 x 12	5 x 11	2,8	192460
76	3	-	4 x 8	8 x 12	5 x 11	2,8	140639
89	3 ½	-	4 x 9	8 x 13	5 x 12	3,2	115071
89	3 ½	-	4 x 9	8 x 13	5 x 12	3,2	160936
102	4	-	4 x 9	8 x 14	5 x 13	4,5	184119
102	4	-	4 x 9	8 x 14	5 x 13	4,5	142985
115	4 ½	-	4 x 9	8 x 15	6 x 14	6,2	125686
115	4 ½	-	4 x 9	8 x 15	6 x 14	6,2	137352
127	5	-	4 x 10	8 x 15	6 x 14	7,3	178622
127	5	-	4 x 10	8 x 14	6 x 14	7,3	110041
R - Spherical S - Semi Ballistic							

Button bit – DROP CENTER – RETRAC

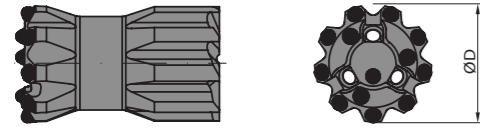


Diameter		Flushing Holes (mm)		Buttons (mm)		Weight	Model
		Side	Front	Gauge	Front		
mm	inch	No x Size	No x Size	No x Size	No x Size	kg	No
70	2 ¾	-	4 x 8	8 x 11	5 x 10	2,6	150800
70	2 ¾	-	4 x 8	8 x 11	5 x 10	2,6	122674
76	3	-	4 x 8	8 x 12	5 x 11	3,4	148366
76	3	-	4 x 8	8 x 12	5 x 11	3,4	139032
89	3 ½	-	4 x 9	8 x 13	5 x 12	5,2	102411
89	3 ½	-	4 x 9	8 x 13	5 x 12	5,2	129604
102	4	-	4 x 9	8 x 14	5 x 13	7,0	161506
102	4	-	4 x 9	8 x 14	5 x 13	7,0	107453
115	4 ½	-	4 x 9	8 x 15	6 x 14	9,3	150414
115	4 ½	-	4 x 9	8 x 15	6 x 14	9,3	154979
127	5	-	4 x 10	8 x 15	8 x 14	11,5	109634
127	5	-	4 x 10	8 x 15	8 x 14	11,5	136242
R - Spherical S - Semi Ballistic							

Button bit – DROP CENTER



Button bit – DROP CENTER – RETRAC



Button bit – FLAT FACE



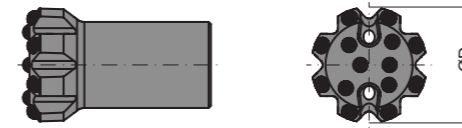
Diameter		Flushing Holes (mm)		Buttons (mm)		Weight	Model
mm	inch	Side No x Size	Front No x Size	Gauge No x Size	Front No x Size		
70	2 ¾	-	3 x 9	9 x 11	4 x 10	2,3	103642
70	2 ¾	-	3 x 9	9 x 11	4 x 10	2,3	111535
76	3	-	3 x 9	9 x 12	4 x 10	2,7	100259
76	3	-	3 x 9	9 x 12	4 x 10	2,7	180704
89	3 ½	-	3 x 10	9 x 13	4 x 11	3,2	161748
89	3 ½	-	3 x 10	9 x 13	4 x 11	3,2	187100
102	4	-	3 x 10	9 x 14	5 x 12	4,3	166454
102	4	-	3 x 10	9 x 14	5 x 12	4,3	191798
115	4 ½	-	3 x 10	9 x 15	5 x 13	6,0	165889
115	4 ½	-	3 x 10	9 x 15	5 x 13	6,0	137857
127	5	-	3 x 10	9 x 16	5 x 14	7,1	103683
127	5	-	3 x 10	9 x 16	5 x 14	7,1	189410
70	2 ¾	-	3 x 9	9 x 11	4 x 10	2,8	106451
70	2 ¾	-	3 x 9	9 x 11	4 x 10	2,8	199520
76	3	-	3 x 9	9 x 12	4 x 10	3,4	136911
76	3	-	3 x 9	9 x 12	4 x 10	3,4	112404
89	3 ½	-	3 x 10	9 x 13	4 x 11	5,3	161354
89	3 ½	-	3 x 10	9 x 13	4 x 11	5,3	175240
102	4	-	3 x 10	9 x 14	5 x 12	6,9	192642
102	4	-	3 x 10	9 x 14	5 x 12	6,9	112644
115	4 ½	-	3 x 10	9 x 15	5 x 13	8,8	187600
115	4 ½	-	3 x 10	9 x 15	5 x 13	8,8	177644
127	5	-	3 x 10	9 x 16	5 x 14	10,2	182307
127	5	-	3 x 10	9 x 16	5 x 14	10,2	136292
76	3	-	3 x 9	9 x 12	8 x 10	2,8	179649
76	3	-	3 x 9	9 x 12	8 x 10	2,8	159227
80	3 5/32	-	3 x 9	9 x 12	8 x 10	3,0	185268
80	3 5/32	-	3 x 9	9 x 12	8 x 10	3,0	104622
89	3 ½	-	3 x 10	9 x 13	9 x 11	3,3	142283
89	3 ½	-	3 x 10	9 x 13	9 x 11	3,3	133579
102	4	-	3 x 10	9 x 14	9 x 12	4,6	170933
102	4	-	3 x 10	9 x 14	9 x 12	4,6	158922
115	4 ½	-	3 x 10	9 x 15	10 x 13	6,5	184668
115	4 ½	-	3 x 10	9 x 15	10 x 13	6,5	143434

R - Spherical S - Semi Ballistic

Button bit – FLAT FACE – RETRAC



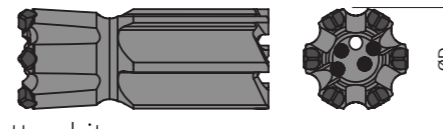
Button bit – FLAT FACE – Heavy Duty



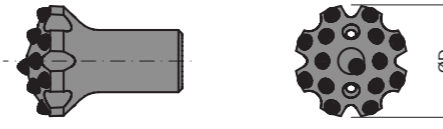
Button bit – FLAT FACE – RETRAC – Heavy Duty



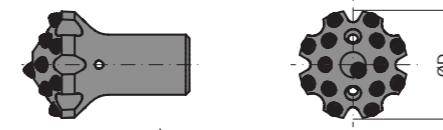
Button bit – DROP CENTER – RETRAC



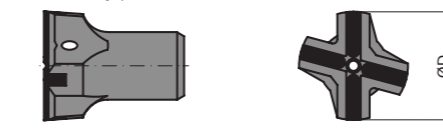
Button bit



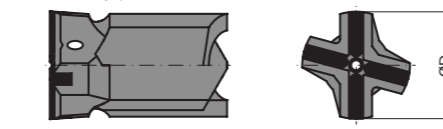
Reaming button bit



Cross X-type bit



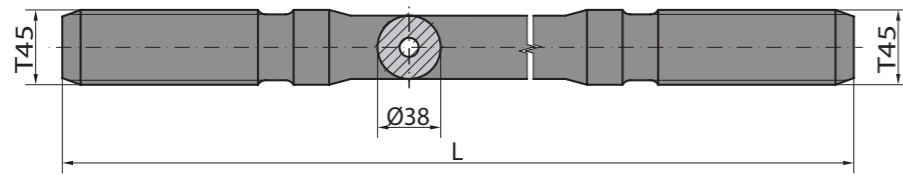
Cross X-type bit – RETRAC



Diameter		Flushing Holes (mm)		Buttons (mm)		Weight	Model
mm	inch	Side No x Size	Front No x Size	Gauge No x Size	Front No x Size		
76	3	-	3 x 9	9 x 12	8 x 10	3,5	167194
76	3	-	3 x 9	9 x 12	8 x 10	3,5	172478
80	3 5/32	-	3 x 9	9 x 12	8 x 10	4,2	123380
80	3 5/32	-	3 x 9	9 x 12	8 x 10	4,2	177879
89	3 ½	-	3 x 10	9 x 13	9 x 11	5,4	171553
89	3 ½	-	3 x 10	9 x 13	9 x 11	5,4	152300
102	4	-	3 x 10	9 x 14	9 x 12	7,2	121843
102	4	-	3 x 10	9 x 14	9 x 12	7,2	138454
115	4 ½	-	3 x 10	9 x 15	9 x 13	8,4	144052
115	4 ½	-	3 x 10	9 x 15	9 x 13	8,4	101207
70	2 ¾	-	2 x 9	8 x 12	4 x 11	2,4	143193
76	3	-	2 x 10	8 x 13	4 x 12	2,8	147722
80	3 5/32	-	2 x 11	8 x 13	5 x 12	3,0	131262
89	3 ½	-	2 x 11	8 x 14	5 x 13	3,3	105065
102	4	-	2 x 11	8 x 15	6 x 14	4,6	195946
115	4 ½	-	2 x 12	8 x 16	7 x 15	6,5	132144
70	2 ¾	-	2 x 9	8 x 12	4 x 11	3,2	152313
76	3	-	2 x 10	8 x 13	4 x 12	3,5	154269
80	3 5/32	-	2 x 11	8 x 13	5 x 12	4,2	129273
89	3 ½	-	2 x 11	8 x 14	5 x 13	5,4	196822
102	4	-	2 x 11	8 x 15	6 x 14	7,2	132176
115	4 ½	-	2 x 12	8 x 15	7 x 14	8,4	197530
70	2 ¾	2 x 10	1 x 10	6 x 14	4 x 9	3,1	198976
76	3	2 x 10	1 x 10	6 x 14	4 x 9	3,7	166733
76	3	-	2 x 10	8 x 12	6 x 11	2,8	166928
89	3 ½	-	2 x 10	8 x 13	6 x 12	3,4	149634
102	4	-	2 x 11	8 x 13	7 x 12	4,7	110451
115	4 ½	-	2 x 12	8 x 14	8 x 13	6,6	172950
115	4 ½	1 x 8	3 x 8	9 x 13	8 x 12	6,6	134279
127	5	1 x 9	3 x 9	9 x 14	9 x 13	8,1	116242
152	6	1 x 10	3 x 10	9 x 15	11 x 14	11,2	117186
76	3	2 x 9	1 x 10	-	-	2,7	135283
89	3 ½	2 x 10	1 x 10	-	-	3,3	109274
102	4	2 x 10	1 x 11	-	-	4,7	112957
76	3	2 x 9	1 x 10	-	-	3,5	152710
89	3 ½	2 x 10	1 x 10	-	-	4,7	193905
102	4	2 x 10	1 x 11	-	-	6,8	171348

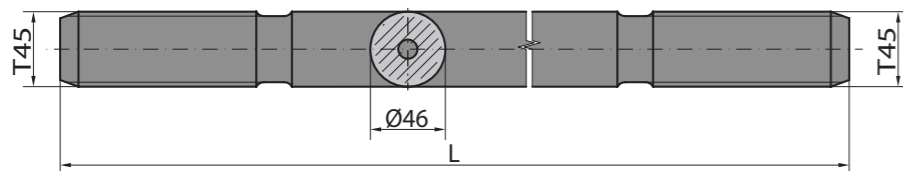
R - Spherical S - Semi Ballistic

Extension rods diameter 38mm



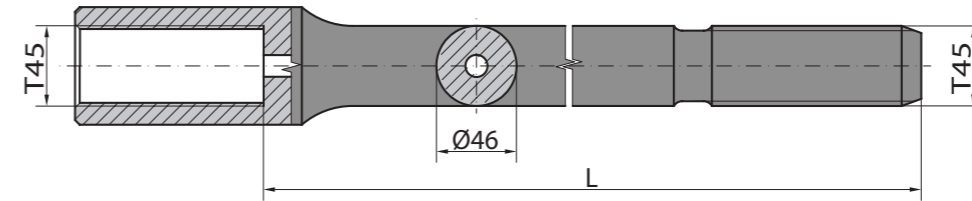
Hex		Threads	Dimensions Lenght			Weight	Model
mm	inch		mm	ft	inch		
38	1 ½	T45/T45	915	3	-	8,1	209726
38	1 ½	T45/T45	1220	4	-	10,7	288082
38	1 ½	T45/T45	1525	5	-	13,4	264057
38	1 ½	T45/T45	1830	6	-	16,1	256279
38	1 ½	T45/T45	2165	7	-	19,0	206844
38	1 ½	T45/T45	2435	8	-	21,3	283300
38	1 ½	T45/T45	3050	10	-	26,7	227988
38	1 ½	T45/T45	3660	12	-	32,0	224087
38	1 ½	T45/T45	4265	14	-	37,3	269189
38	1 ½	T45/T45	4915	16	-	43,0	299774
38	1 ½	T45/T45	5490	18	-	48,0	236874
38	1 ½	T45/T45	6100	20	-	53,3	229170
Flushing hole ϕ 14.5 mm							

Extension rods diameter 46mm



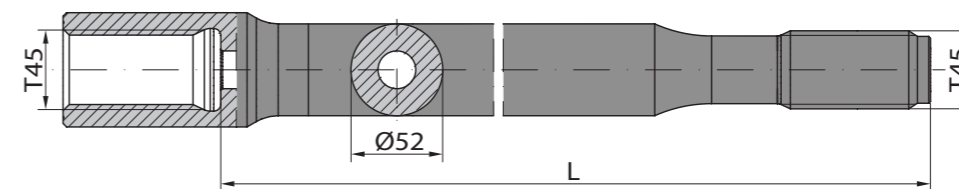
Hex		Threads	Dimensions Lenght			Weight	Model
mm	inch		mm	ft	inch		
46	1 ¾	T45/T45	915	3	-	9,6	215082
46	1 ¾	T45/T45	1220	4	-	13,0	286167
46	1 ¾	T45/T45	1525	5	-	16,4	298337
46	1 ¾	T45/T45	1830	6	-	19,8	292416
46	1 ¾	T45/T45	2165	7	-	23,5	284389
46	1 ¾	T45/T45	2435	8	-	26,5	268045
46	1 ¾	T45/T45	3050	10	-	33,4	222069
46	1 ¾	T45/T45	3660	12	-	40,2	222787
46	1 ¾	T45/T45	4265	14	-	46,9	299587
46	1 ¾	T45/T45	4915	16	-	54,2	208626
46	1 ¾	T45/T45	6100	20	-	67,4	215469
46	1 ¾	T45/T45	7200	24	-	79,7	261742
Flushing hole ϕ 17 mm							

Speed rods / M-F rods



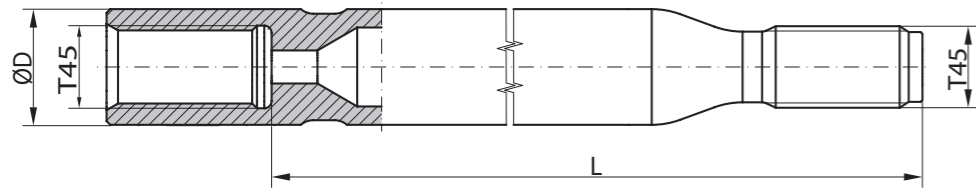
Hex		Threads	Dimensions Lenght			Weight	Model
mm	inch		mm	ft	inch		
46	1 ¾	T45/T45	1525	5	-	18,3	234123
46	1 ¾	T45/T45	1830	6	-	21,7	211004
46	1 ¾	T45/T45	2165	7	-	25,4	280760
46	1 ¾	T45/T45	2435	8	-	28,5	245801
46	1 ¾	T45/T45	3050	10	-	35,3	268373
46	1 ¾	T45/T45	3660	12	-	42,1	298744
46	1 ¾	T45/T45	4265	14	-	48,8	243758
46	1 ¾	T45/T45	4915	16	-	56,1	230323
46	1 ¾	T45/T45	6100	20	-	69,3	280720
46	1 ¾	T45/T45	7200	24	-	81,6	241374
Flushing hole ϕ 17 mm, Female end ϕ 67 mm							

Guide rods / M-F rods



Hex		Threads	Dimensions Lenght			Weight	Model
mm	inch		mm	ft	inch		
52	2	T45/T45	3050	10	-	43,3	220349
52	2	T45/T45	3660	12	-	51,7	238076
52	2	T45/T45	4365	14	-	60,1	243670
Flushing hole ϕ 21,5 mm, Female end ϕ 67 mm							

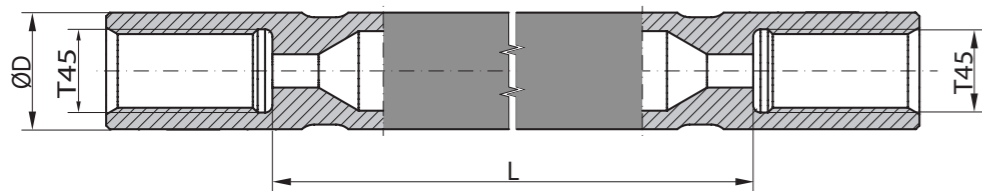
Guide tube rods



Hex		Threads	Dimensions Lenght			Weight	Model
mm	inch		mm	ft	inch		
63	2 ½	T45/T45	1830	6	-	25,9	284458
63	2 ½	T45/T45	3660	12	-	49,7	229388
64	2 ½	T45/T45	4265	14	-	57,6	297399
76	3	T45/T45	3660	12	-	72,2	209141
76	3	T45/T45	4265	14	-	83,6	288507

Flushing hole ϕ 14,5 mm, Female end ϕ 56 mm

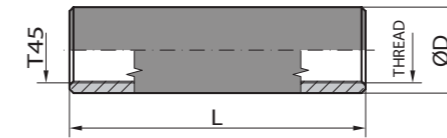
Guide tube rods



Hex		Threads	Dimensions Lenght			Weight	Model
mm	inch		mm	ft	inch		
63	2 ½	T45/T45	1830	6	-	26,9	200233
63	2 ½	T45/T45	3660	12	-	50,7	239796
63	2 ½	T45/T45	4265	14	-	58,6	295921
76	3	T45/T45	3660	12	-	74,9	208571
76	3	T45/T45	4265	14	-	86,3	298905

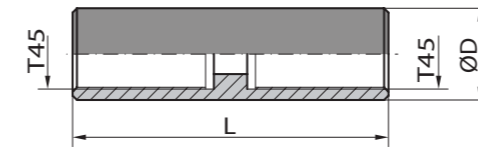
Flushing hole ϕ 17 mm, Female end ϕ 56 mm

Coupling sleeve



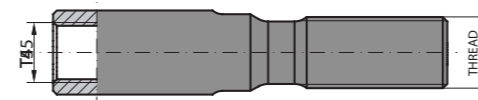
Diameter		Threads	Lenght		Weight	Model
mm	inch		mm	inch		
64	2 ½	T45/T38	180	7 ^{3/32}	2,9	371393
64	2 ½	T45/T38	180	7 ^{3/32}	2,5	365379

Full bridge



Diameter		Threads	Lenght		Weight	Model
mm	inch		mm	inch		
64	2 ½	T45/T45	210	8 ¼	3,0	390662

M-F adapters

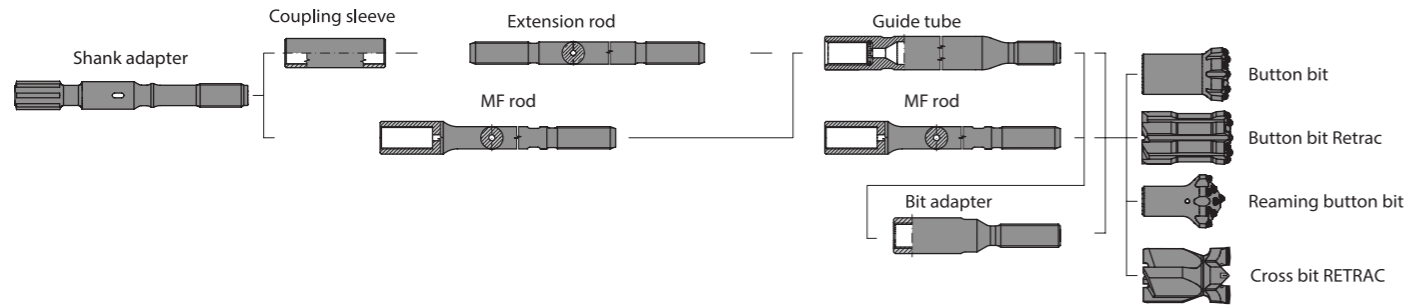


Threads	Lenght		Weight	Model
female/male	mm	inch		
T45/T38	235	10 ¾	3,2	343107
T45/T51	275	10 7/8	3,8	393917

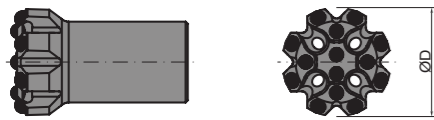
M-M adapters



Threads	Lenght		Weight	Model
female/male	mm	inch		
T45/T45	220	8 ¾	2,4	

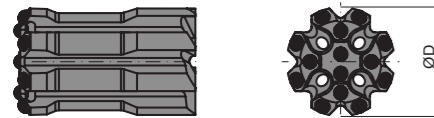


Button bit – DROP CENTER



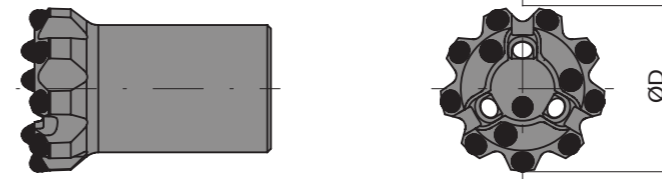
Diameter		Flushing Holes (mm)		Buttons (mm)		Weight	Model
mm	inch	Side No x Size	Front No x Size	Gauge No x Size	Front No x Size		
89	3 ½	-	4 x 9	8 x 13	5 x 12	3,5	176532
89	3 ½	-	4 x 9	8 x 13	5 x 12	3,5	105559
102	4	-	4 x 10	8 x 14	6 x 13	5,0	108579
102	4	-	4 x 10	8 x 14	6 x 13	5,0	188053
115	4 ½	-	4 x 11	8 x 15	6 x 14	7,3	118443
115	4 ½	-	4 x 11	8 x 15	6 x 14	7,3	180393
127	5	-	4 x 11	8 x 16	8 x 15	7,8	181088
127	5	-	4 x 11	8 x 16	8 x 15	7,8	148516
152	6	-	4 x 12	8 x 17	4x15, 4x16	12,2	177757
152	6	-	4 x 12	8 x 17	4x15, 4x16	12,2	186021
R - Spherical S - Semi Ballistic							

Button bit – DROP CENTER – RETRAC



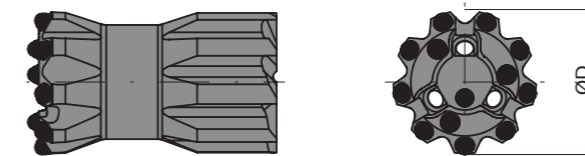
Diameter		Flushing Holes (mm)		Buttons (mm)		Weight	Model
mm	inch	Side No x Size	Front No x Size	Gauge No x Size	Front No x Size		
89	3 ½	-	4 x 9	8 x 13	5 x 12	5,2	135879
89	3 ½	-	4 x 9	8 x 13	5 x 12	5,2	123669
102	4	-	4 x 10	8 x 14	6 x 13	7,0	113539
102	4	-	4 x 10	8 x 14	6 x 13	7,0	161629
115	4 ½	-	4 x 11	8 x 15	6 x 14	9,4	199189
115	4 ½	-	4 x 11	8 x 15	6 x 14	9,4	113119
127	5	-	4 x 11	8 x 16	8 x 15	11,8	180808
127	5	-	4 x 11	8 x 16	8 x 15	11,8	143554
152	6	-	4 x 12	8 x 17	4x15, 4x16	19,0	179573
152	6	-	4 x 12	8 x 17	4x15, 4x16	19,0	141074
R - Spherical S - Semi Ballistic							

Button bit – DROP CENTER



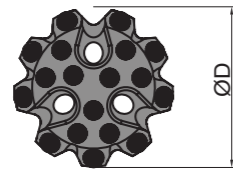
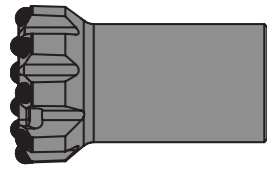
Diameter		Flushing Holes (mm)		Buttons (mm)		Weight	Model
mm	inch	Side No x Size	Front No x Size	Gauge No x Size	Front No x Size		
89	3 ½	-	3 x 11	9 x 13	4 x 11	3,5	102718
89	3 ½	-	3 x 11	9 x 13	4 x 11	3,5	139071
102	4	-	3 x 12	9 x 14	5 x 12	4,5	142333
102	4	-	3 x 12	9 x 14	5 x 12	4,5	164131
115	4 ½	-	3 x 12	9 x 15	5 x 13	6,5	106803
115	4 ½	-	3 x 12	9 x 15	5 x 13	6,5	173601
127	5	-	3 x 13	9 x 16	5 x 14	8,1	187469
127	5	-	3 x 13	9 x 16	5 x 14	8,1	104568
R - Spherical S - Semi Ballistic							

Button bit – DROP CENTER – RETRAC



Diameter		Flushing Holes (mm)		Buttons (mm)		Weight	Model
mm	inch	Side No x Size	Front No x Size	Gauge No x Size	Front No x Size		
89	3 ½	-	3 x 11	9 x 13	4 x 11	6,6	181552
89	3 ½	-	3 x 11	9 x 13	4 x 11	6,6	140019
102	4	-	3 x 12	9 x 14	5 x 12	9,1	111462
102	4	-	3 x 12	9 x 14	5 x 12	9,1	157892
115	4 ½	-	3 x 12	9 x 15	5 x 13	10,2	145201
115	4 ½	-	3 x 12	9 x 15	5 x 13	10,2	108845
127	5	-	3 x 13	9 x 16	5 x 14	13,8	195972
127	5	-	3 x 13	9 x 16	5 x 14	13,8	160109
R - Spherical S - Semi Ballistic							

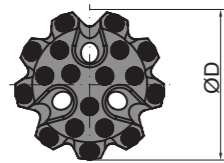
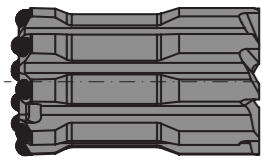
Button bit – FLAT FACE



Diameter		Flushing Holes (mm)		Buttons (mm)		Weight	Model
		Side	Front	Gauge	Front		
mm	inch	No x Size	No x Size	No x Size	No x Size	kg	
80	3 5/32	-	3 x 10	9 x 12	8 x 10	3,1	124233
80	3 5/32	-	3 x 10	9 x 12	8 x 10	3,1	120748
89	3 1/2	-	3 x 11	9 x 13	8 x 11	3,6	149965
89	3 1/2	-	3 x 11	9 x 13	8 x 11	3,6	163511
102	4	-	3 x 12	9 x 14	9 x 12	4,6	184364
102	4	-	3 x 12	9 x 14	9 x 12	4,6	147880
115	4 1/2	-	3 x 12	9 x 15	10 x 13	6,7	155496
115	4 1/2	-	3 x 12	9 x 15	10 x 13	6,7	178373
127	5	-	3 x 13	9 x 16	10 x 14	8,4	107491
127	5	-	3 x 13	9 x 16	10 x 14	8,4	125774
152	6	-	3 x 14	9 x 16	10 x 14	12,1	116986
152	6	-	3 x 14	9 x 16	10 x 14	12,1	161900

R - Spherical S - Semi Ballistic

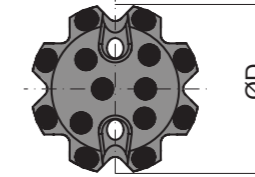
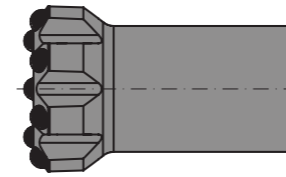
Button bit – FLAT FACE – RETRAC



Diameter		Flushing Holes (mm)		Buttons (mm)		Weight	Model
		Side	Front	Gauge	Front		
mm	inch	No x Size	No x Size	No x Size	No x Size	kg	
80	3 5/32	-	3 x 10	9 x 12	8 x 10	4,0	170021
80	3 5/32	-	3 x 10	9 x 12	8 x 10	4,0	185136
89	3 1/2	-	3 x 11	9 x 13	8 x 11	4,9	189470
89	3 1/2	-	3 x 11	9 x 13	8 x 11	4,9	110222
102	4	-	3 x 12	9 x 14	9 x 12	6,8	178488
102	4	-	3 x 12	9 x 14	9 x 12	6,8	128016
115	4 1/2	-	3 x 12	9 x 15	10 x 13	8,8	105837
115	4 1/2	-	3 x 12	9 x 15	10 x 13	8,8	192388
127	5	-	3 x 13	9 x 16	10 x 14	12,0	198696
127	5	-	3 x 13	9 x 16	10 x 14	12,0	172470
152	6	-	3 x 14	9 x 16	10 x 14	19,2	123097
152	6	-	3 x 14	9 x 16	10 x 14	19,2	129019

R - Spherical S - Semi Ballistic

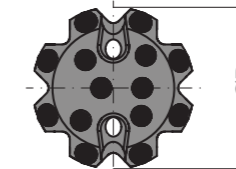
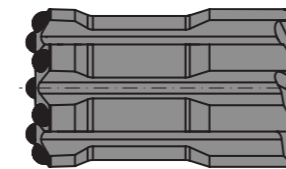
Button bit – FLAT FACE – Heavy Duty



Diameter		Flushing Holes (mm)		Buttons (mm)		Weight	Model
		Side	Front	Gauge	Front		
mm	inch	No x Size	No x Size	No x Size	No x Size	kg	
80	3 5/32	-	2 x 12	8 x 13	5 x 12	3,1	128323
89	3 1/2	-	2 x 13	8 x 14	5 x 13	3,6	131073
102	4	-	2 x 13	8 x 15	6 x 14	4,6	120582
115	4 1/2	-	2 x 14	8 x 16	7 x 15	6,7	140231
127	5	-	2 x 14	8 x 17	8 x 16	8,4	195146

R - Spherical

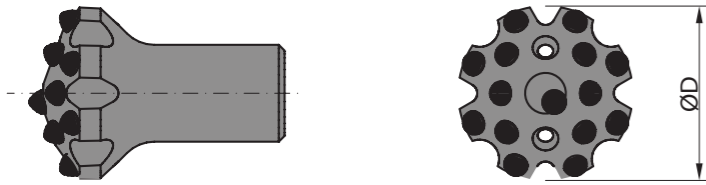
Button bit – FLAT FACE – RETRAC – Heavy Duty



Diameter		Flushing Holes (mm)		Buttons (mm)		Weight	Model
		Side	Front	Gauge	Front		
mm	inch	No x Size	No x Size	No x Size	No x Size	kg	
80	3 5/32	-	2 x 12	8 x 13	5 x 12	4,0	186051
89	3 1/2	-	2 x 13	8 x 14	5 x 13	4,9	137437
102	4	-	2 x 13	8 x 15	6 x 14	6,8	158952
115	4 1/2	-	2 x 14	8 x 16	7 x 15	8,8	193820
127	5	-	2 x 14	8 x 17	8 x 16	12,0	123674

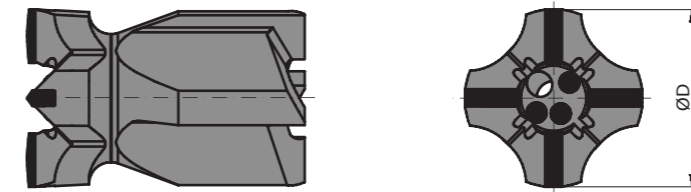
R - Spherical

Button bit



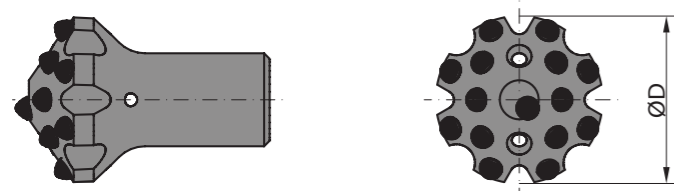
Diameter		Flushing Holes (mm)		Buttons (mm)		Weight	Model
		Side	Front	Gauge	Front		
mm	inch	No x Size	No x Size	No x Size	No x Size	kg	
89	3 ½	-	2 x 13	8 x 13	6 x 12	3,6	198390
102	4	-	2 x 13	8 x 13	7 x 13	4,6	194012
115	4 ½	-	2 x 14	8 x 14	8 x 13	6,7	149884
127	5	-	2 x 14	8 x 15	8 x 14	8,4	129141
R - Spherical							

Cross bit – RETRAC



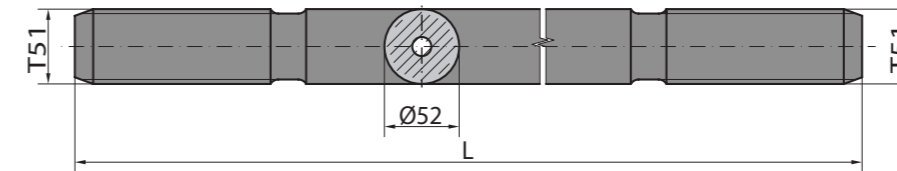
Diameter		Flushing Holes (mm)		Buttons (mm)		Weight	Model
		Side	Front	Gauge	Front		
mm	inch	No x Size	No x Size	No x Size	No x Size	kg	
102	4	-	1 x 16	-	3 x 13	5,8	185594
115	4 ½	-	1 x 16	-	3 x 13	7,3	178210
127	5	-	1 x 16	-	3 x 14	9,8	107073
140	5 ½	-	1 x 16	-	3 x 14	12,7	142580
152	6	-	1 x 16	-	3 x 14	15,3	111873
R - Spherical							

Reaming button bit



Diameter		Flushing Holes (mm)		Buttons (mm)		Weight	Model
		Side	Front	Gauge	Front		
mm	inch	No x Size	No x Size	No x Size	No x Size	kg	
115	4 ½	1 x 9	3 x 9	9 x 13	8 x 12	6,7	133236
127	5	1 x 10	3 x 10	9 x 14	9 x 13	8,4	128350
152	6	1 x 11	3 x 11	9 x 15	11 x 14	12,1	118693
R - Spherical							

Extension rods

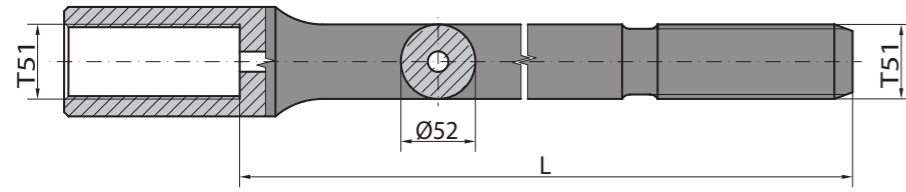


Hex		Threads	Dimensions Length			Weight	Model
mm	inch		mm	ft	inch		
52	2	T51/T51	915	3	-	11,8	259800
52	2	T51/T51	1220	4	-	16,1	210529
52	2	T51/T51	1525	5	-	20,3	224810
52	2	T51/T51	1830	6	-	24,5	288837
52	2	T51/T51	2165	7	-	29,2	247725
52	2	T51/T51	2435	8	-	32,9	293470
52	2	T51/T51	3050	10	-	41,4	286400
52	2	T51/T51	3660	12	-	49,9	294373
52	2	T51/T51	4265	14	-	58,2	293324
52	2	T51/T51	4915	16	-	67,2	252388
52	2	T51/T51	6100	20	-	83,7	273931
52	2	T51/T51	7200	24	-	98,9	281220
Flushing hole ϕ 21.5 mm							

T51 Rods



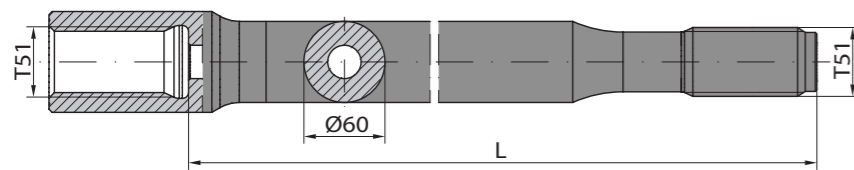
Speed rods / M-F rods



Hex		Threads	Dimensions Lenght			Weight	Model
mm	inch		mm	ft	inch		
52	2	T51/T51	1525	5	-	23,5	221655
52	2	T51/T51	1830	6	-	27,5	239257
52	2	T51/T51	2165	7	-	32,4	230886
52	2	T51/T51	2435	8	-	36,1	292156
52	2	T51/T51	3050	10	-	44,6	274865
52	2	T51/T51	3660	12	-	53,1	255602
52	2	T51/T51	4265	14	-	61,5	299621
52	2	T51/T51	4915	16	-	70,5	252394
52	2	T51/T51	6100	20	-	86,9	256732
52	2	T51/T51	7200	24	-	102,1	207625

Flushing hole ϕ 21,5 mm, Female end ϕ 74 mm

Guide rods / M-F rods



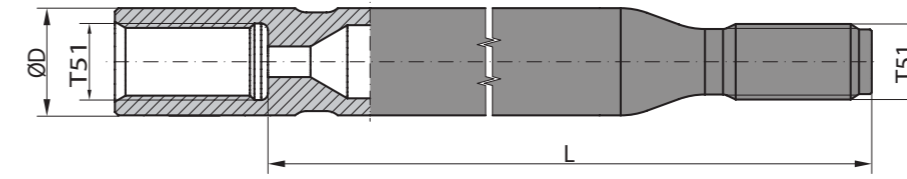
Hex		Threads	Dimensions Lenght			Weight	Model
mm	inch		mm	ft	inch		
60	2 3/8	T51/T51	3660	12	-	70,7	238943
60	2 3/8	T51/T51	4265	14	-	82,3	289005

Flushing hole ϕ 22,6 mm, Female end ϕ 74 mm

T51 Rods

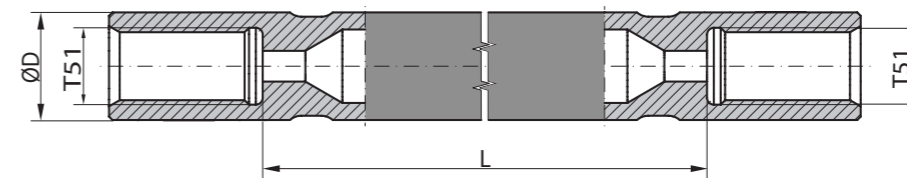


Guide tube rods



Hex		Threads	Dimensions Lenght			Weight	Model
mm	inch		mm	ft	inch		
76	3	T51/T51	1830	6	-	37,2	250676
76	3	T51/T51	3660	12	-	71,8	228052
76	3	T51/T51	4265	14	-	83,2	225579
87	3 1/2	T51/T51	3660	12	-	95,7	230775
87	3 1/2	T51/T51	4265	14	-	110,9	230629

Guide tube rods

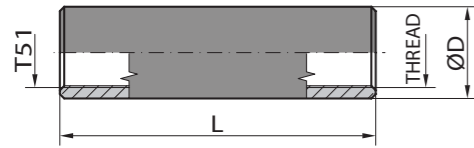


Hex		Threads	Dimensions Lenght			Weight	Model
mm	inch		mm	ft	inch		
76	3	T51/T51	1830	6	-	39,4	258530
76	3	T51/T51	3660	12	-	74,0	269055
76	3	T51/T51	4265	14	-	85,4	201322
87	3 1/2	T51/T51	3660	12	-	100,7	242629
87	3 1/2	T51/T51	4265	14	-	115,9	259174

T51 Couplings

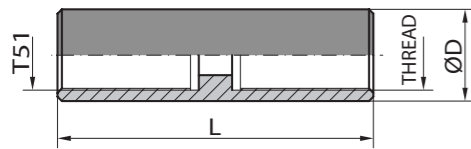


Coupling sleeve



Diameter		Threads	Length		Weight kg	Model
mm	inch		mm	inch		
72	2 ¾	T51/T51	210	8 ^{9/32}	4,0	305742
74	3	T51/T51	195	7 ^{11/16}	4,2	323607
74	3	T51/T51	210	8 ^{9/32}	4,7	382686

Full bridge



Diameter		Threads	Length		Weight kg	Model
mm	inch		mm	inch		
76	3	T51/T45	225	8 ^{7/8}	5,6	338175
76	3	T51/T51	240	9 ½	5,7	397073





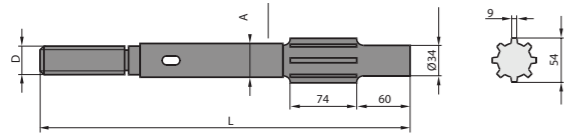
HIGH QUALITY SHANKS

FMS Group constantly stocks all the shanks you may need in its wide product range. It offers the transmission of the impact and rotation produced by the hammer transfer high quality steel on the shanks to the tool string without loss of efficiency, with a long life guarantee...



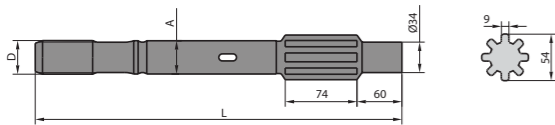


Atlas Copco COP 1036 / COP 1038 HB / COP 1038 HD / COP 1238 HF / COP 1238 LE / COP 1238 ME



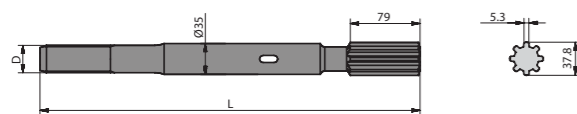
Thread	Diameter (mm)	Length (mm)	Flushing hole (mm)	Weight (kg)	Model
R25	38	485	-	3,8	428813
R32	38	485	-	4,0	495087
R32	38	500	-	4,1	482429
R32	38	575	-	4,7	488325
R32	38	462	-	3,9	464709
R32	38	485	-	4,1	445044
R32	38	500	-	4,2	415506
R32	38	485	-	4,1	457747
R32	38	500	-	4,2	470446
R32	38	590	-	4,9	440331
R32	45	500	-	5,4	409243
R32	45	575	-	6,0	493921

Atlas Copco COP 1038 HL / COP 1238



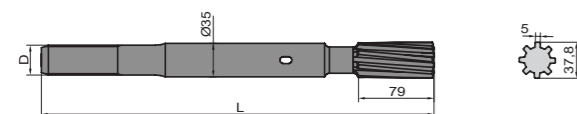
Thread	Diameter (mm)	Length (mm)	Flushing hole (mm)	Weight (kg)	Model
R32	38	575	-	4,7	404582
R38	38	575	-	4,8	418385
R45	45	575	-	6,0	400716

Atlas Copco COP 1132



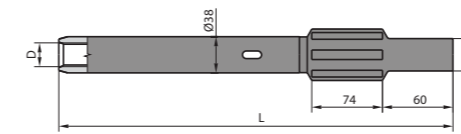
Thread	Diameter (mm)	Length (mm)	Flushing hole (mm)	Weight (kg)	Model
R28	35	410	-	2,4	409582
R32	35	410	-	2,5	471287

Atlas Copco COP 1140



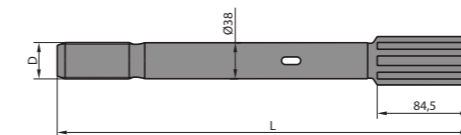
Thread	Diameter (mm)	Length (mm)	Flushing hole (mm)	Weight (kg)	Model
R32	35	410	-	2,6	403149

Atlas Copco COP 1238



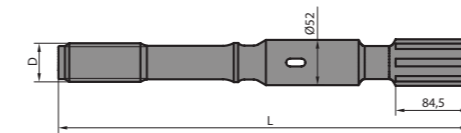
Thread	Diameter (mm)	Length (mm)	Flushing hole (mm)	Weight (kg)	Model
R25	38	485	-	3,8	449198

Atlas Copco COP 1432 / COP 1440 / COP 1532 / COP 1838 HD



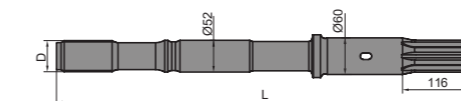
Thread	Diameter (mm)	Length (mm)	Flushing hole (mm)	Weight (kg)	Model
R32	38	575	-	4,7	480688
R38	38	575	-	4,8	444999
R45	45	575	-	6,0	434466

Atlas Copco COP 1440 / COP 1550 / COP 1838



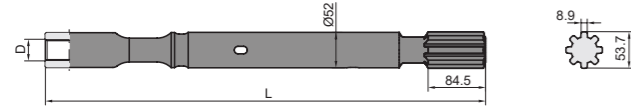
Thread	Diameter (mm)	Length (mm)	Flushing hole (mm)	Weight (kg)	Model
R28	35	410	-	2,4	471575
R32	35	410	-	2,5	432124

Atlas Copco COP 1838 Extractor



Thread	Diameter (mm)	Length (mm)	Flushing hole (mm)	Weight (kg)	Model
R32	35	410	-	2,6	467625

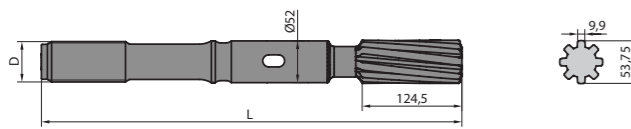
Atlas Copco COP 1440 / COP 1838



Thread	Diameter (mm)	Length (mm)	Flushing hole (mm)	Weight (kg)	Model
R28	35	410	-	2,4	495981
R32	35	410	-	2,5	426689



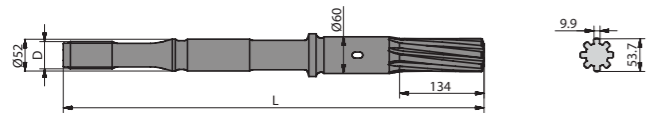
Atlas Copco COP 1640 / COP 1840



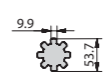
Thread	Diameter (mm)	Length (mm)	Flushing hole (mm)	Weight (kg)	Model
R28	35	410	-	2,4	417419
R32	35	410	-	2,5	414954
					449669



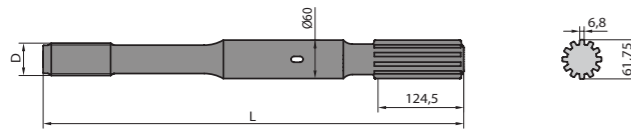
Atlas Copco COP 2550 Ex



Thread	Diameter (mm)	Length (mm)	Flushing hole (mm)	Weight (kg)	Model
R28	35	410	-	2,4	411047
R32	35	410	-	2,5	449960



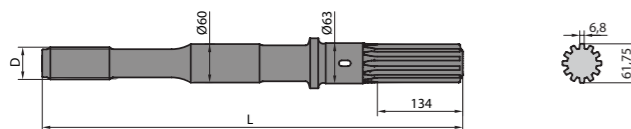
Atlas Copco COP 2160



Thread	Diameter (mm)	Length (mm)	Flushing hole (mm)	Weight (kg)	Model
R28	35	410	-	2,4	427590
R32	35	410	-	2,5	455000



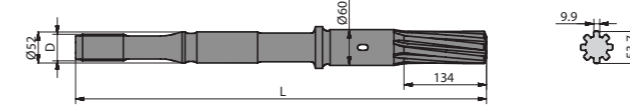
Atlas Copco COP 2160 Extractor



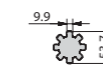
Thread	Diameter (mm)	Length (mm)	Flushing hole (mm)	Weight (kg)	Model
R28	35	410	-	2,4	477250
R32	35	410	-	2,5	462780



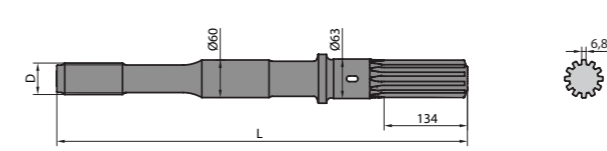
Atlas Copco COP 1850 Ex



Thread	Diameter (mm)	Length (mm)	Flushing hole (mm)	Weight (kg)	Model
T45	60	770	-	11,4	467230
T51	60	770	-	12,2	429418



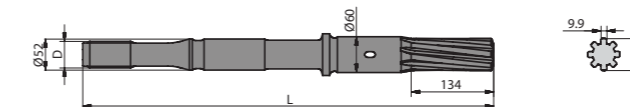
Atlas Copco COP 2560 Extractor



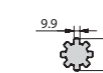
Thread	Diameter (mm)	Length (mm)	Flushing hole (mm)	Weight (kg)	Model
T45	63	770	-	13,2	406286
T51	63	770	-	13,3	408186
T60	63	770	-	14,0	402240
GT60	63	770	-	14,0	473731



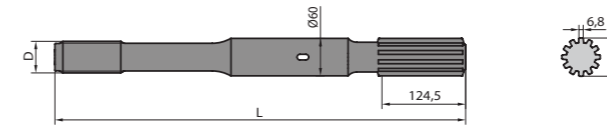
Atlas Copco COP 2150 Ex



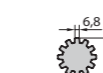
Thread	Diameter (mm)	Length (mm)	Flushing hole (mm)	Weight (kg)	Model
T45	60	770	-	11,4	466472
T51	60	770	-	12,2	468014



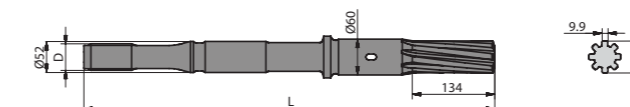
Atlas Copco COP 2560



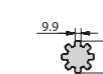
Thread	Diameter (mm)	Length (mm)	Flushing hole (mm)	Weight (kg)	Model
T45	60	770	-	10,9	472049
T51	60	770	-	11	440147
T60	60	770	-	12,4	420027



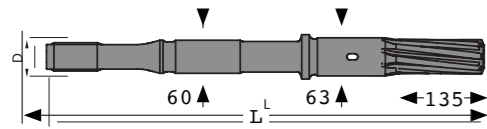
Atlas Copco COP 2550 Ex



Thread	Diameter (mm)	Length (mm)	Flushing hole (mm)	Weight (kg)	Model
T45	60	770	-	11,4	444799
T51	60	770	-	12,2	446770

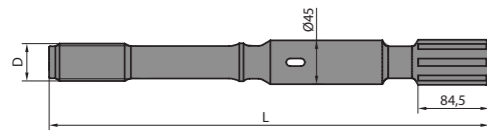


Atlas Copco COP 2560 Extractor Plus (+)



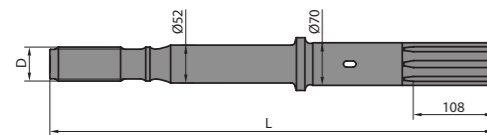
Thread	Diameter (mm)	Length (mm)	Flushing hole (mm)	Weight (kg)	Model
T45	63	770	-	13,2	426953
T51	63	770	-	13,3	455079

Atlas Copco COP 3038



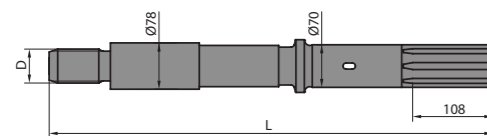
Thread	Diameter (mm)	Length (mm)	Flushing hole (mm)	Weight (kg)	Model
T38	45	435	-	4,8	418178
T38	45	525	-	5,2	415266

Atlas Copco COP 4050 Extractor



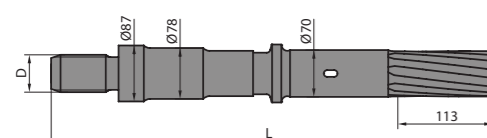
Thread	Diameter (mm)	Length (mm)	Flushing hole (mm)	Weight (kg)	Model
T51	70	790	-	14,7	496392

Atlas Copco COP 4050 Extractor



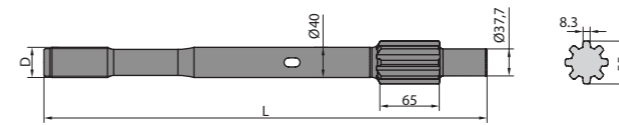
Thread	Diameter (mm)	Length (mm)	Flushing hole (mm)	Weight (kg)	Model
ST58	70	790	-	21,8	422566

Atlas Copco COP 4050 Extractor



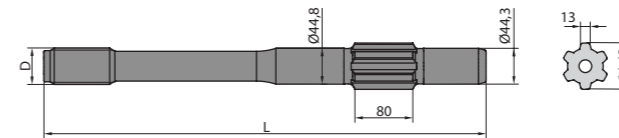
Thread	Diameter (mm)	Length (mm)	Flushing hole (mm)	Weight (kg)	Model
ST68	70	835	-	21,7	

Furukawa HD 150



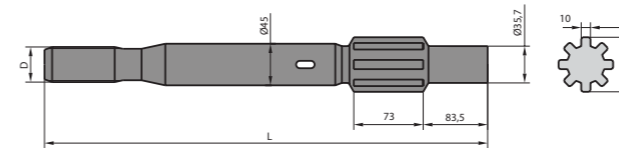
Thread	Diameter (mm)	Length (mm)	Flushing hole (mm)	Weight (kg)	Model
R38	40	520	-	4,95	456085

Furukawa HD 300



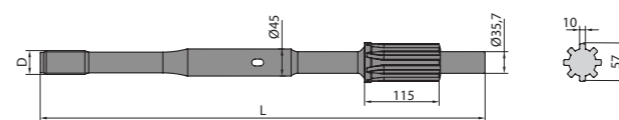
Thread	Diameter (mm)	Length (mm)	Flushing hole (mm)	Weight (kg)	Model
T45	44,8	655	16	6,7	444661

Furukawa HCR 9-DS / HD 609



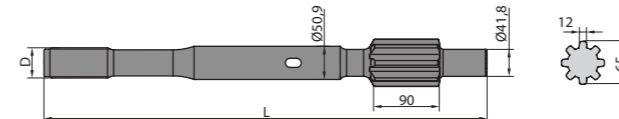
Thread	Diameter (mm)	Length (mm)	Flushing hole (mm)	Weight (kg)	Model
T38	45	690	-	6,4	433817

Furukawa HD 609RP



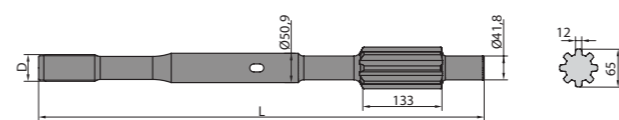
Thread	Diameter (mm)	Length (mm)	Flushing hole (mm)	Weight (kg)	Model
T38	44,8	795	-	7,8	481309

Furukawa HD 612



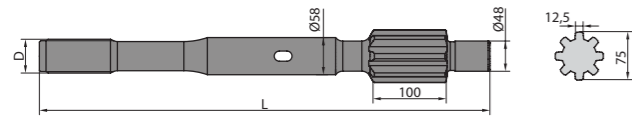
Thread	Diameter (mm)	Length (mm)	Flushing hole (mm)	Weight (kg)	Model
T45	50,9	670	-	8,55	417887
T51	50,9	670	-	8,70	464570

Furukawa HD 612RP



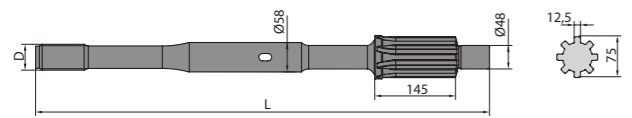
Thread	Diameter (mm)	Length (mm)	Flushing hole (mm)	Weight (kg)	Model
T45	50,9	845	-	10,6	478337
T51	50,9	845	-	10,8	454133

Furukawa HD 615



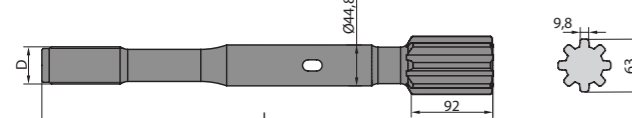
Thread	Diameter (mm)	Length (mm)	Flushing hole (mm)	Weight (kg)	Model
T45	58	700	-	10,6	429596
T51	58	700	-	10,8	434996

Furukawa HD 615RP



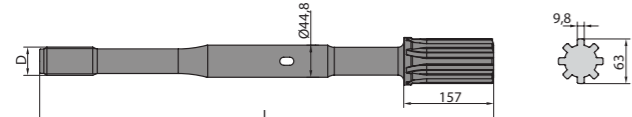
Thread	Diameter (mm)	Length (mm)	Flushing hole (mm)	Weight (kg)	Model
T45	58	877	-	15,0	495355
T51	58	877	-	15,4	433599

Furukawa HD 709



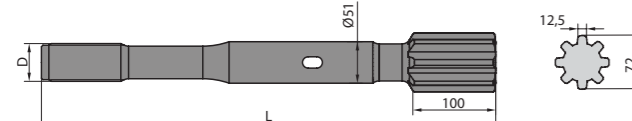
Thread	Diameter (mm)	Length (mm)	Flushing hole (mm)	Weight (kg)	Model
T38	45	690	-	6,4	472870

Furukawa HD 709RP



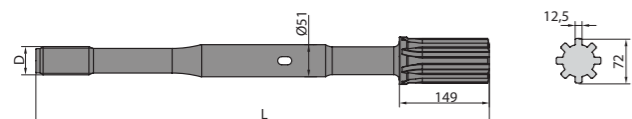
Thread	Diameter (mm)	Length (mm)	Flushing hole (mm)	Weight (kg)	Model
T38	44,8	785	-	8,85	416631
T45	44,8	785	-	8,90	432538

Furukawa HD 712



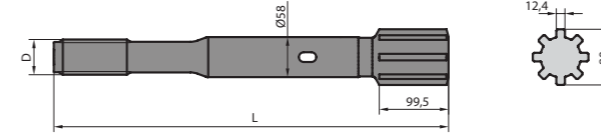
Thread	Diameter (mm)	Length (mm)	Flushing hole (mm)	Weight (kg)	Model
T45	51	590	-	8,4	425441
T51	51	590	-	8,8	421108
T45	51	790	-	9,7	436452
T51	51	790	-	9,9	420180

Furukawa HD 712RP



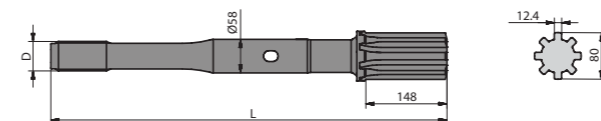
Thread	Diameter (mm)	Length (mm)	Flushing hole (mm)	Weight (kg)	Model
T45	51	850	-	12,0	458878
T51	51	885	-	13,0	438254

Furukawa HD 715



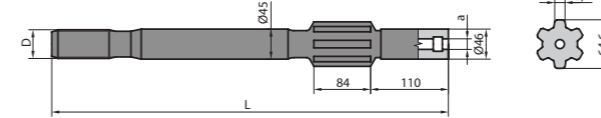
Thread	Diameter (mm)	Length (mm)	Flushing hole (mm)	Weight (kg)	Model
T51	58	790	-	6,4	432599

Furukawa HD 715 RP



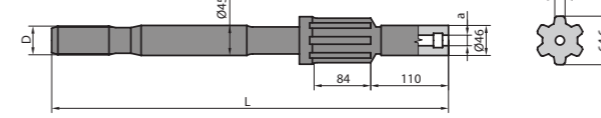
Thread	Diameter (mm)	Length (mm)	Flushing hole (mm)	Weight (kg)	Model
T51	58	885	-	16,0	471975

Ingersoll Rand YH 65 / YH 70



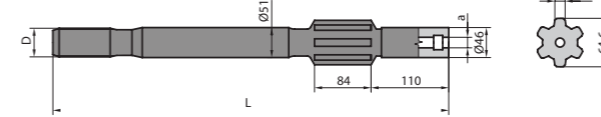
Thread	Diameter (mm)	Length (mm)	Flushing hole (mm)	Weight (kg)	Model
T38	45	500	19	5,2	442164
T45	45	500	19	5,5	407567

Ingersoll Rand YH 65 RP



Thread	Diameter (mm)	Length (mm)	Flushing hole (mm)	Weight (kg)	Model
T38	45	700	19	7,8	439500
T45	45	700	19	7,9	409042

Ingersoll Rand YH 80 A

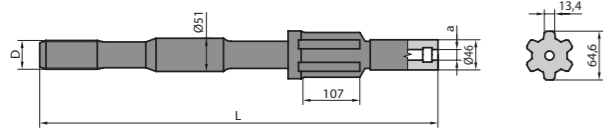


Thread	Diameter (mm)	Length (mm)	Flushing hole (mm)	Weight (kg)	Model
T38	51	500	19	5,5	487692
T45	51	500	19	5,7	420141
T51	51	500	19	6,4	400169

Ingersoll Rand

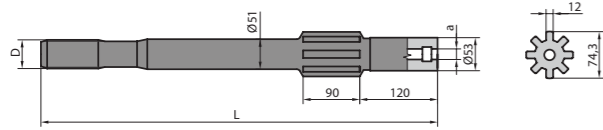


Ingersoll Rand YH 80 A RP



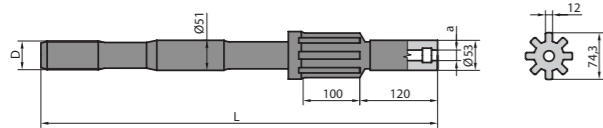
Thread	Diameter (mm)	Length (mm)	Flushing hole (mm)	Weight (kg)	Model
T45	51	700	19	8,8	465154
T51	51	700	19	9,3	479763

Ingersoll Rand YH 95 / YH 100



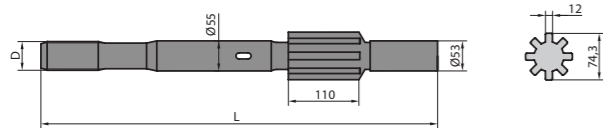
Thread	Diameter (mm)	Length (mm)	Flushing hole (mm)	Weight (kg)	Model
T51	51	625	23	8,2	453892

Ingersoll Rand YH 95 RP / YH 100 RP



Thread	Diameter (mm)	Length (mm)	Flushing hole (mm)	Weight (kg)	Model
T51	51	840	23	11,6	413802

Ingersoll Rand YH 110 V / YH 135

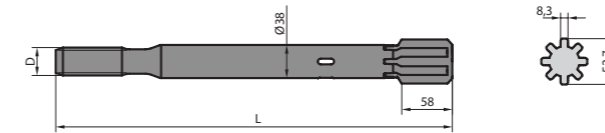


Thread	Diameter (mm)	Length (mm)	Flushing hole (mm)	Weight (kg)	Model
T45	55	728	-	11,4	419145
T51	55	728	-	11,7	475264

Montabert

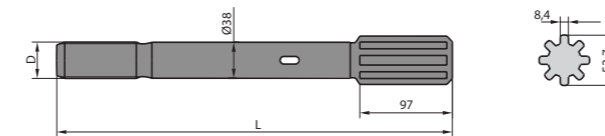


Montabert HC 40 / HC 50



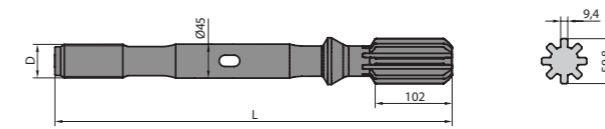
Thread	Diameter (mm)	Length (mm)	Flushing hole (mm)	Weight (kg)	Model
R32	38	370	-	3,0	450649
R32	38	445	-	3,5	416272
R38	38	370	-	3,3	484333
R38	38	380	-	3,2	408055
R38	38	445	-	4,0	415470
T38	38	370	-	3,2	438097
T38	38	445	-	3,8	409721

Montabert HC 80 / HC 90 / HC 105



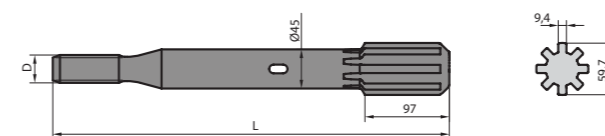
Thread	Diameter (mm)	Length (mm)	Flushing hole (mm)	Weight (kg)	Model
R32	38	440	-	3,6	478793
R38	38	440	-	3,9	478971
T38	38	440	-	3,9	444784

Montabert HC 80 RP / HC 120 RP



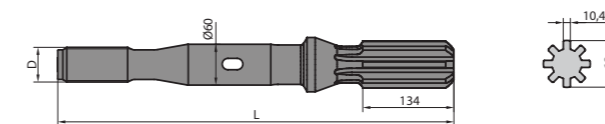
Thread	Diameter (mm)	Length (mm)	Flushing hole (mm)	Weight (kg)	Model
T38	45	770	-	8,6	471870
T45	45	670	-	7,5	423706
T45	45	770	-	8,6	419192

Montabert HC 109



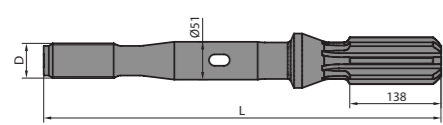
Thread	Diameter (mm)	Length (mm)	Flushing hole (mm)	Weight (kg)	Model
R32	45	530	-	5,6	499989
R38	45	530	-	5,9	418812
T38	45	530	-	5,9	434880
T45	45	530	-	6,1	434304

Montabert HC 160



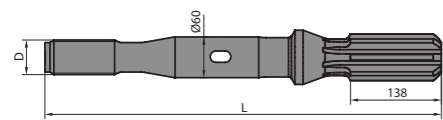
Thread	Diameter (mm)	Length (mm)	Flushing hole (mm)	Weight (kg)	Model
T51	60	810	-	15,6	490803

Montabert HC 200



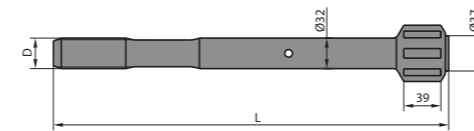
Thread	Diameter (mm)	Length (mm)	Flushing hole (mm)	Weight (kg)	Model
T51	51	840	-	13,2	462807

Montabert HC 200 A



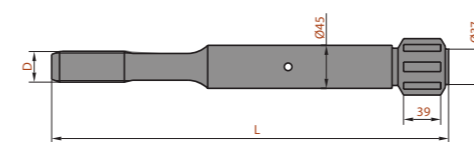
Thread	Diameter (mm)	Length (mm)	Flushing hole (mm)	Weight (kg)	Model
T51	60	835	-	16,3	403749
GT60	60	850	-	16,9	451552

Sandvik – Tamrock HL 300



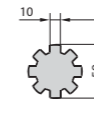
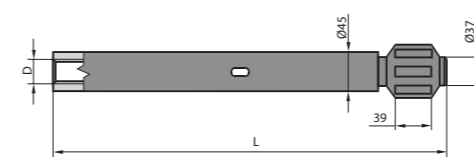
Thread	Diameter (mm)	Length (mm)	Flushing hole (mm)	Weight (kg)	Model
R32	32	400	-	2,6	425982

Sandvik – Tamrock HL 300 S



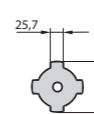
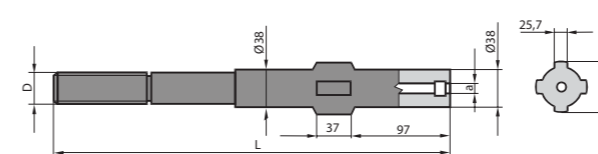
Thread	Diameter (mm)	Length (mm)	Flushing hole (mm)	Weight (kg)	Model
R32	45	380	-	3,9	445786
R38	45	380	-	4,1	475390
T38	45	380	-	4,2	411622

Sandvik – Tamrock HL 300 S



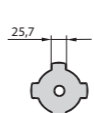
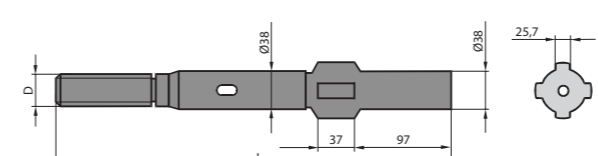
Thread	Diameter (mm)	Length (mm)	Flushing hole (mm)	Weight (kg)	Model
R28	45	245	-	2,6	475439
R32	45	245	-	2,6	435129

Sandvik – Tamrock HL 438 L / HL 438 T / HLR 438 T



Thread	Diameter (mm)	Length (mm)	Flushing hole (mm)	Weight (kg)	Model
R32	38	380	12	3,9	413129
R38	38	380	12	3,9	482901
T38	38	380	12	4,0	424860

Sandvik – Tamrock HL 438 TS / HL 538

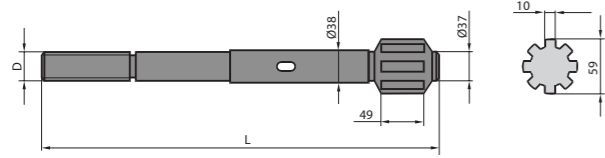


Thread	Diameter (mm)	Length (mm)	Flushing hole (mm)	Weight (kg)	Model
R32	38	450	-	3,8	439206
R38	38	450	-	4,4	435182
R38	38	495	-	4,8	409505
T38	38	450	-	4,4	463735
T38	38	495	-	4,8	492775
T38	38	545	-	5,2	471729



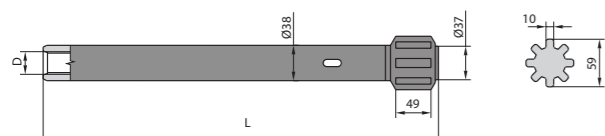
IN EVERY CONDITIONS
UNIQUE PERFORMANCE

Sandvik – Tamrock HL 500 / HL 500 S / HL 510 / HL 510 S



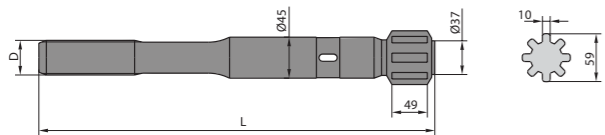
Thread	Diameter (mm)	Length (mm)	Flushing hole (mm)	Weight (kg)	Model
R32	38	460	-	3,9	406495
R32	38	550	-	4,3	466657
R38	38	450	-	4,1	422240
R38	38	460	-	4,2	410671
R38	38	500	-	4,5	414814
R38	38	550	-	4,6	446382
T38	38	460	-	4,2	415612
T38	38	500	-	4,5	400651
T38	38	550	-	4,6	440748

Sandvik – Tamrock HL 500 S



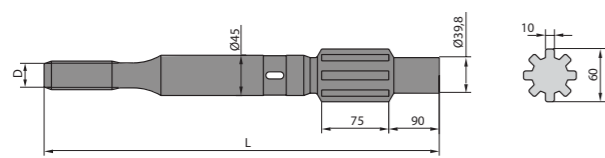
Thread	Diameter (mm)	Length (mm)	Flushing hole (mm)	Weight (kg)	Model
R25	38	550	-	9,0	414029

Sandvik – Tamrock HL 500 / HL 510



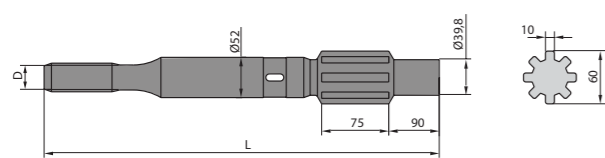
Thread	Diameter (mm)	Length (mm)	Flushing hole (mm)	Weight (kg)	Model
R32	45	550	-	5,7	424501
R38	45	500	-	5,4	481725
T38	45	550	-	5,9	407793
T45	45	550	-	6,2	466244

Sandvik – Tamrock HL 600 / HL 600 S



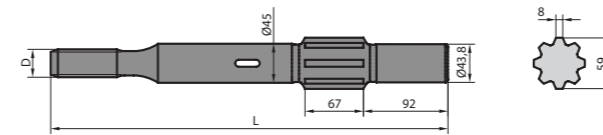
Thread	Diameter (mm)	Length (mm)	Flushing hole (mm)	Weight (kg)	Model
R32	45	600	-	5,8	472875
R38	45	525	-	5,6	421833
T38	45	525	-	5,6	481475
T38	45	600	-	6,0	419867
T45	45	525	-	5,8	460495
T45	45	600	-	6,4	496281

Sandvik – Tamrock HL 6 50



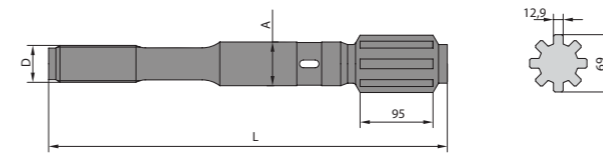
Thread	Diameter (mm)	Length (mm)	Flushing hole (mm)	Weight (kg)	Model
T45	52	650	-	2,6	422957
T51	52	650	-	2,6	479538

Sandvik – Tamrock HL 645



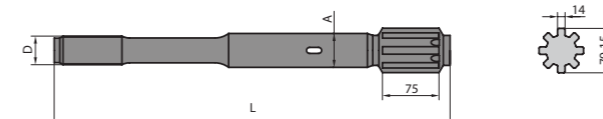
Thread	Diameter (mm)	Length (mm)	Flushing hole (mm)	Weight (kg)	Model
R32	45	525	-	5,8	434783
T38	45	600	-	6,3	434682
T45	45	600	-	6,5	411611

Sandvik – Tamrock HL 700 / HL 800



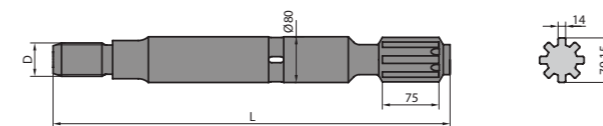
Thread	Diameter (mm)	Length (mm)	Flushing hole (mm)	Weight (kg)	Model
T38	45	600	-	7,0	430416
T45	45	600	-	7,2	475280
T38	52	600	-	8,4	499800
T45	52	600	-	8,8	470753
T45	52	700	-	10,0	456101
T51	52	600	-	9,2	464634

Sandvik – Tamrock HL 1000



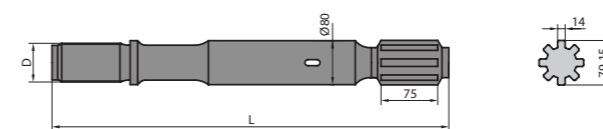
Thread	Diameter (mm)	Length (mm)	Flushing hole (mm)	Weight (kg)	Model
T45	52	670	-	10,0	408360
T51	52	590	-	9,3	458143
T51	52	670	-	10,0	485650
T60	60	670	-	12,7	474597

Sandvik – Tamrock HL 1000



Thread	Diameter (mm)	Length (mm)	Flushing hole (mm)	Weight (kg)	Model
ST58	80	635	-	18,4	457888
ST68	80	640	-	18,8	458904

Sandvik – Tamrock HL 1000

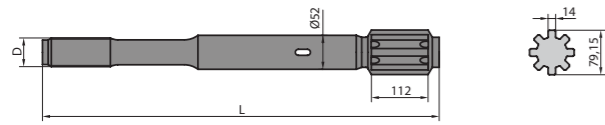


Thread	Diameter (mm)	Length (mm)	Flushing hole (mm)	Weight (kg)	Model
GT60	80	670	-	19,5	400843

Sandvik – Tamrock

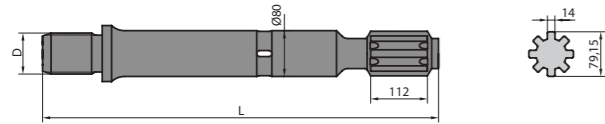


Sandvik – Tamrock HL 1500



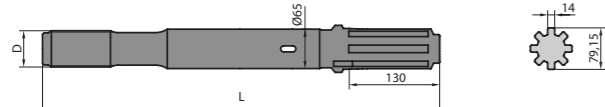
Thread	Diameter (mm)	Length (mm)	Flushing hole (mm)	Weight (kg)	Model
T51	52	710	-	11,8	479897

Sandvik – Tamrock HL 1500



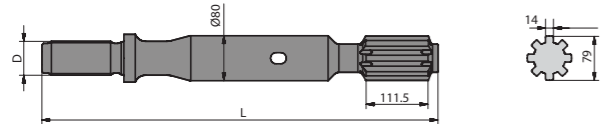
Thread	Diameter (mm)	Length (mm)	Flushing hole (mm)	Weight (kg)	Model
ST58	80	635	-	18,1	426780
ST68	80	635	-	18,3	453587

Sandvik – Tamrock HL 1500 / HL 1560



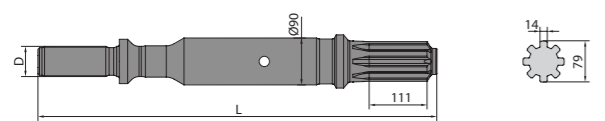
Thread	Diameter (mm)	Length (mm)	Flushing hole (mm)	Weight (kg)	Model
T51	65	760	-	16,4	433400
GT60	65	760	-	16,7	448271

Sandvik – Tamrock HL 1500-80 / HL 1560-80



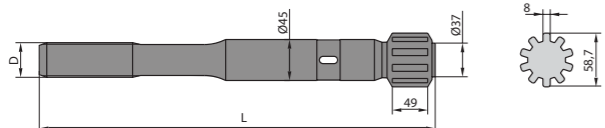
Thread	Diameter (mm)	Length (mm)	Flushing hole (mm)	Weight (kg)	Model
GT60	80	760	-	21,5	454651

Sandvik – Tamrock HL 1500-90 SPE



Thread	Diameter (mm)	Length (mm)	Flushing hole (mm)	Weight (kg)	Model
T60	90	760	-	25,9	401357

Sandvik – Tamrock HLX 5

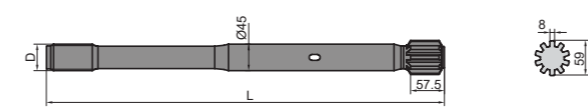


Thread	Diameter (mm)	Length (mm)	Flushing hole (mm)	Weight (kg)	Model
R32	45	500	-	5,1	429738
R38	45	500	-	5,4	427139
T38	45	500	-	5,4	416957
T45	45	575	-	6,4	430181
R38	45	575	-	6,3	459650

Sandvik – Tamrock, Soosan

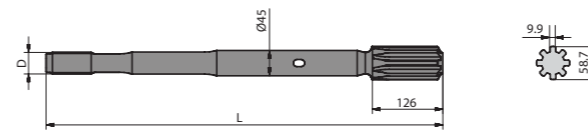


Sandvik – Tamrock HLX 5T



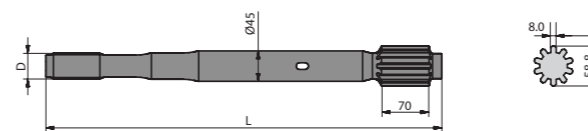
Thread	Diameter (mm)	Length (mm)	Flushing hole (mm)	Weight (kg)	Model
T45	45	860	-	9,4	477881

Sandvik – Tamrock HLX 5 PE-45



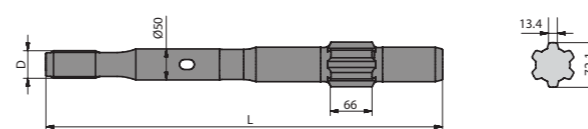
Thread	Diameter (mm)	Length (mm)	Flushing hole (mm)	Weight (kg)	Model
R32	45	575	-	5,7	461762
T38	45	720	-	7,6	410474

Sandvik RD 520 / RD 525



Thread	Diameter (mm)	Length (mm)	Flushing hole (mm)	Weight (kg)	Model
T38	45	600	-	6,4	480174
T38	45	745	-	7,7	438612
R32	45	745	-	7,6	423343
T45	45	880	-	9,9	448405

Soosan SP 3



Thread	Diameter (mm)	Length (mm)	Flushing hole (mm)	Weight (kg)	Model
T45	50	655	-	10,5	452525

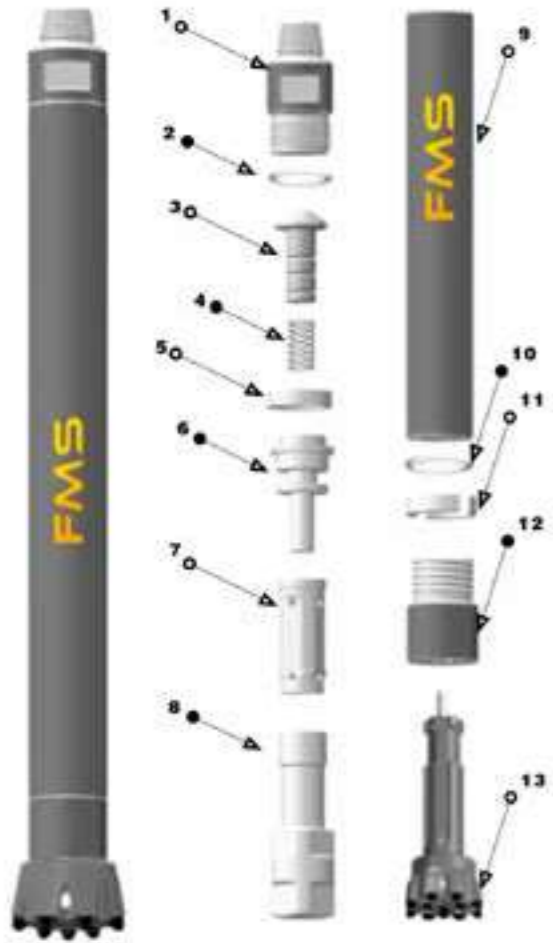


FMS

HAMMER PARTS

Bits, Coupling & More ...

DHH35 DTH HAMMER



Description	Weight (Kg)	Model
1-Top Sub	4.2	484120
2- O-ring	0.01	469138
3-Check Valve	0.2	424264
4-Spring	0.02	434472
5-Compression Buffer	0.02	464049
6-Air Distributor	1.4	473072
7-Internal Cylinder	1.6	432986
8-Piston	5.4	498654
9-External Cylinder	9.5	439631
10- O-ring	0.01	468561
11-Stop Ring	0.2	430911
12-Drive Chuck	1.95	498909
13-Drill Bit	5	404471

Length (Excluding bit)	930mm	Hole Range	φ90—φ110	Recommended rotation speed	28r/min	
External Diameter	24.50Kg	Connection Thread	API 2 3/8" Reg			
Description	φ81mm	Working air pressure	0.5—2.5Mpa	Air Consumption	10bar	80L/s
Description	IR3.5"	Impact frequency at 17Bar	28Hz		18bar	160L/s
	Cop34				24bar	210L/s

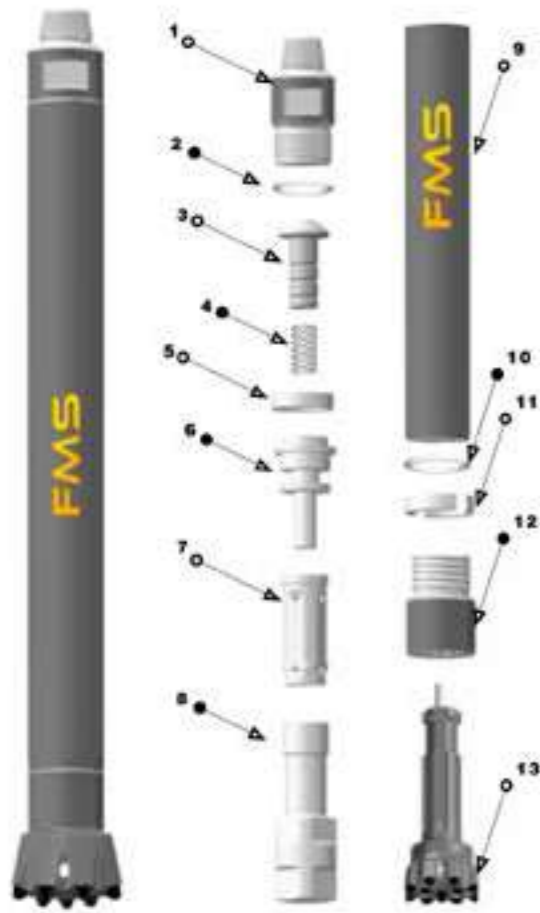
According to requirement of client, top sub can be made as the design with double spanners and protected with tungsten carbide inserts; Quantity of air guide holes on the check valve can be increased to enhance flushing of rock cuttings.

BITS FOR 3" DTH HAMMER

Drill Bit	Bit Diameter	Flushing	Gauge	Front	Weight	Model
	(mm)	Holes	Buttons	Buttons	(Kg)	
 Cop32	85	2	6×φ14	4×φ12	4.2	189475
	90	2	6×φ14	5×φ12	4.5	167858
	95	2	7×φ14	5×φ12	4.7	171180
	100	2	8×φ14	6×φ12	5	184682
	105	2	8×φ14	6×φ13	5.3	130047
 BR3	85	2	6×φ14	4×φ12	3.8	123445
	90	2	6×φ14	5×φ12	4	116545
	95	2	7×φ14	5×φ12	4.3	143780
	100	2	8×φ14	6×φ12	4.8	136715
	105	2	8×φ14	6×φ13	5.2	118358
 DHD3.5 Cop34	85	2	6×φ14	4×φ12	4.2	195655
	90	2	6×φ14	5×φ12	4.5	111318
	95	2	7×φ14	5×φ12	4.8	131792
	100	2	8×φ14	6×φ12	5	141198
	105	2	8×φ14	6×φ13	5.5	145104
 XL3	85	2	6×φ14	4×φ12	4.5	171839
	90	2	6×φ14	5×φ12	4.7	189498
	95	2	7×φ14	5×φ12	4.9	136908
	100	2	8×φ14	6×φ12	5	120112
	105	2	8×φ14	6×φ13	5.5	115835

Optional:FF--Flat face; CC---Concave;CV--Convex

DHH45 DTH HAMMER



Description	Weight (Kg)	Model
1-Top Sub	8.7	415808
2- O-ring	0.01	493559
3-Check Valve	0.42	485277
4-Spring	0.04	435377
5-Compression Buffer	0.04	460166
6-Air Distributor	2.2	409994
7-Internal Cylinder	2.3	423197
8-Piston	8.8	490396
9-External Cylinder	14.8	476476
10- O-ring	0.01	454418
11-Stop Ring	0.2	410959
12-Drive Chuck	3.42	433157
13-Drill Bit	8.3	482926

Length (Excluding bit)	1030mm	Hole Range	φ110—φ135	Recommended rotation speed	25-40r/min	
Weight (Excluding bit)	39.20Kg	Connection Thread	API 2 3/8" Reg			
External Diameter	φ99mm	Working air pressure	0.5—2.5Mpa	Air Consumption	10bar	100L/s
Bit Shank	Cop44	Impact frequency at 17Bar	27Hz		18bar	180L/s
	DHD340				24bar	250L/s

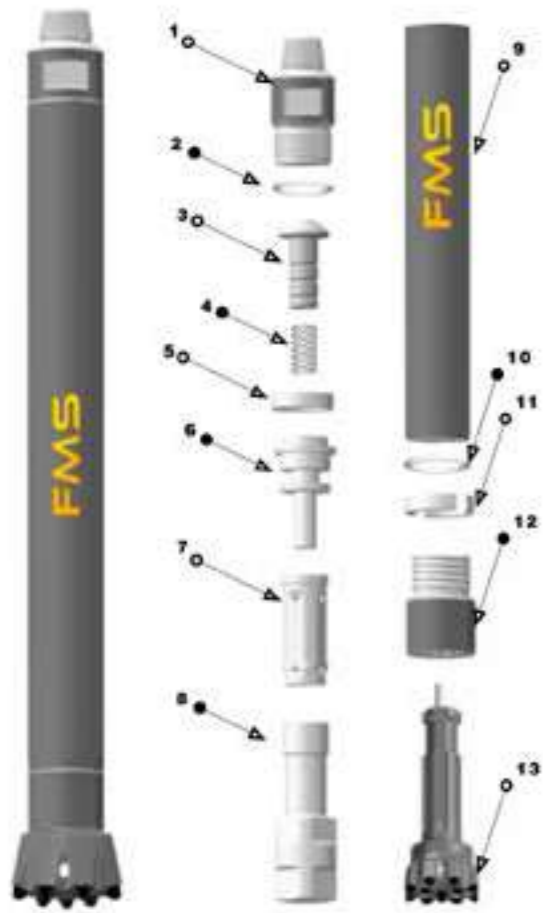
According to requirement of client, top sub can be made as the design with double spanners and protected with tungsten carbide inserts; Quantity of air guide holes on the check valve can be increased to enhance flushing of rock cuttings.

DTH BITS FOR 4" DTH HAMMER

Drill Bit	Bit Diameter	Flushing	Gauge	Front	Weight	Model
	(mm)	Holes	Buttons	Buttons	(Kg)	
DHD340A Cop44	105	2	6×φ14	5×φ13	8.5	186635
	110	2	7×φ14	6×φ13	8.8	121082
	115	2	8×φ14	7×φ13	9	177155
	120	2	8×φ14	8×φ13	9.8	192080
	127	3	9×φ14	9×φ14	11	127320
SD4	105	2	6×φ14	5×φ13	9	152571
	110	2	7×φ14	6×φ13	9.5	119602
	115	2	8×φ14	7×φ13	9.8	164718
	120	2	8×φ14	8×φ13	11.5	101546
	127	3	9×φ14	9×φ14	12.3	188542
QL40	105	2	6×φ14	5×φ13	9	115286
	110	2	7×φ14	6×φ13	9.2	123964
	115	2	8×φ14	7×φ13	9.5	141762
	120	2	8×φ14	8×φ13	10.3	135802
	127	3	9×φ14	9×φ14	11.5	191584
Mission40	105	2	6×φ14	5×φ13	6	192989
	110	2	7×φ14	6×φ13	6.2	139605
	115	2	8×φ14	7×φ13	6.6	199131
	120	2	8×φ14	8×φ13	7	100109
	127	3	9×φ14	9×φ14	7.4	160680

Optional:FF--Flat face; CC---Concave;CV--Convex

DHH55 DTH HAMMER



Description	Weight (Kg)	Model
1-Top Sub	13.2	479528
2- O-ring	0.01	465369
3-Check Valve	0.8	407196
4-Spring	0.04	491132
5-Compression Buffer	0.06	472003
6-Air Distributor	3.8	430255
7-Internal Cylinder	4	416418
8-Piston	17.5	416490
9-External Cylinder	25	483502
10- O-ring	0.01	440725
11-Stop Ring	0.3	449634
12-Drive Chuck	6.4	431546
13-Drill Bit	16	404330

Length (Excluding bit)	1170mm	Hole Range	Φ135—Φ155	Recommended rotation speed	20-30r/min	
Weight (Excluding bit)	71.5Kg	Connection Thread	API 2 3/8" or 3 1/2" Reg			
External Diameter	Φ125mm	Working air pressure	0.5—2.5Mpa	Air Consumption	10bar	145L/s
Bit Shank	Cop54	Impact frequency at 17Bar	25Hz		18bar	280L/s
	DHD350R				24bar	390L/s

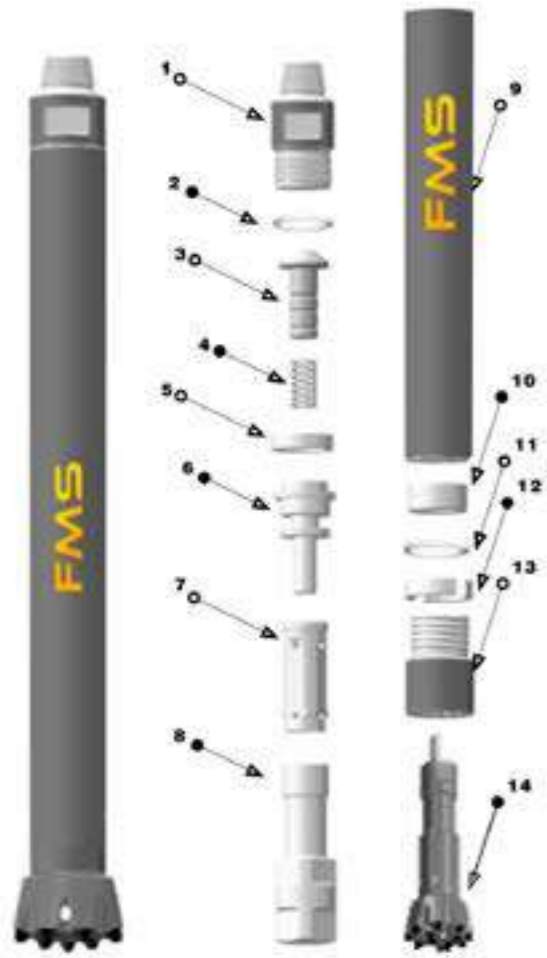
According to requirement of client, top sub can be made as the design with double spanners and protected with tungsten carbide inserts; Quantity of air guide holes on the check valve can be increased to enhance flushing of rock cuttings.

DTH BITS FOR 5" DTH HAMMER

Drill Bit	Bit Diameter	Flushing	Gauge	Front	Weight	Model
	(mm)	Holes	Buttons	Buttons	(Kg)	
 DHD350R Cop54	133	2	7×Φ16	6×Φ14	16	176544
	140	2	8×Φ16	7×Φ14	16.5	118336
	146	2	8×Φ16	8×Φ14	17	144210
	152	2	8×Φ16	7×Φ16	17.5	139446
	165	2	8×Φ16	8×Φ16	18.5	140189
 SD5	133	2	7×Φ16	6×Φ14	15.5	155782
	140	2	8×Φ16	7×Φ14	16	111234
	146	2	8×Φ16	8×Φ14	16.5	180497
	152	2	8×Φ16	7×Φ16	17	155292
	165	2	8×Φ16	8×Φ16	18	120628
 QL50	133	2	7×Φ16	6×Φ14	15.5	159913
	140	2	8×Φ16	7×Φ14	16	134371
	146	2	8×Φ16	8×Φ14	16.5	127834
	152	2	8×Φ16	7×Φ16	17	160951
	165	2	8×Φ16	8×Φ16	18	185427
 Mission50	133	2	7×Φ16	6×Φ14	12.5	172545
	140	2	8×Φ16	7×Φ14	13.5	141356
	146	2	8×Φ16	8×Φ14	14	152830
	152	2	8×Φ16	7×Φ16	14.4	194083
	165	2	8×Φ16	8×Φ16	15	143647

Optional:FF--Flat face; CC---Concave;CV--Convex

DHH65 DTH HAMMER



Description	Weight (Kg)	Model
1-Top Sub	17	491012
2- O-ring	0.02	469808
3-Breakout Ring	0.8	428785
4-Check Valve	0.04	452256
5-Spring	0.08	469977
6-Compression Buffer	5.2	454082
7-Air Distributor	5.2	468553
8-Internal Cylinder	23.6	497191
09-Piston	36.8	448989
10-External Cylinder	2.4	467418
11- O-ring	0.02	440866
12-Stop Ring	0.6	474018
13-Breakout Ring	6	495989
14-Drive Chuck	26	415871

Length (Excluding bit)	1248mm	Hole Range	Φ155—Φ190	Recommended rotation speed	15-25r/min	
Weight (Excluding bit)	98.00Kg	Connection Thread	API 3 1/2" Reg			
External Diameter	Φ142mm	Working air pressure	0.5—2.5Mpa	Air Consumption	10bar	175L/s
Bit Shank	Cop64	Impact frequency at 17Bar	23Hz		18bar	340L/s
	DHD360				24bar	475L/s

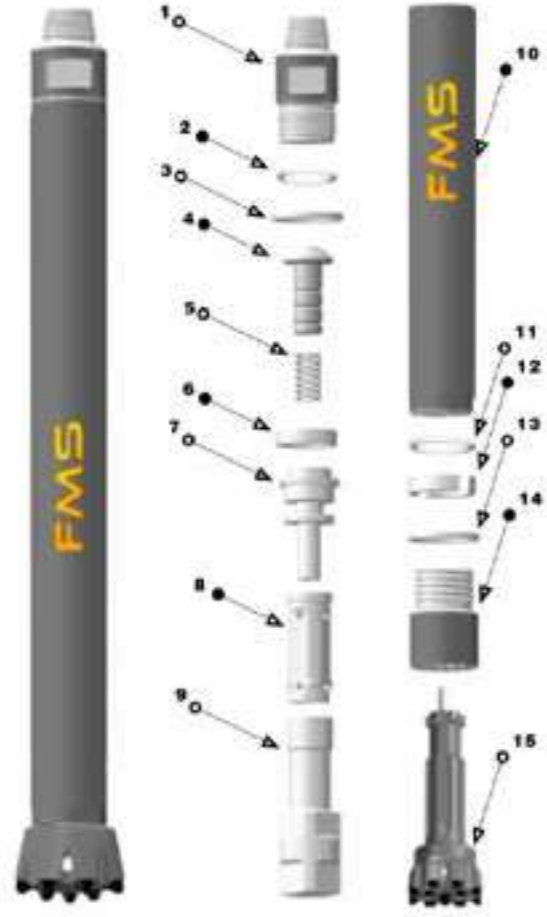
According to requirement of client, top sub can be made as the design with double spanners and protected with tungsten carbide inserts; Quantity of air guide holes on the check valve can be increased to enhance flushing of rock cuttings.

DTH BITS FOR 6" DTH HAMMER

Drill Bit	Bit Diameter	Flushing	Gauge	Front	Weight	Model
	(mm)	Holes	Buttons	Buttons	(Kg)	
 DHD360 Cop64	152	2	8×Φ16	8×Φ16	22	143768
	165	2	8×Φ18	8×Φ16	24	159821
	178	2	8×Φ18	8×Φ16	26	120188
	190	3	9×Φ18	9×Φ16	28	169738
	203	2	10×Φ18	10×Φ16	29.5	129904
 SD6	152	2	8×Φ16	8×Φ16	26	107558
	165	2	8×Φ18	8×Φ16	27	198746
	178	2	8×Φ18	8×Φ16	29	183646
	190	3	9×Φ18	9×Φ16	32	160006
	203	2	10×Φ18	10×Φ16	34	129482
 QL60	152	2	8×Φ16	8×Φ16	24	141129
	165	2	8×Φ18	8×Φ16	25	161286
	178	2	8×Φ18	8×Φ16	27	142172
	190	3	9×Φ18	9×Φ16	29	142228
	203	2	10×Φ18	10×Φ16	33	107892
 Mission60	152	2	8×Φ16	8×Φ16	22	110613
	165	2	8×Φ18	8×Φ16	23	168987
	178	2	8×Φ18	8×Φ16	24	171654
	190	3	9×Φ18	9×Φ16	25	165774
	203	2	10×Φ18	10×Φ16	28	141908

Optional:FF--Flat face; CC---Concave;CV--Convex

DHH85 DTH HAMMER



Description	Weight (Kg)	Model
1-Top Sub	42	415871
2- O-ring	0.02	406036
3-Breakout Ring	0.2	493140
4-Check Valve	1.2	493141
5-Spring	0.1	491666
6-Compression Buffer	0.42	436421
7-Air Distributor	13.4	488835
8-Internal Cylinder	8.2	458384
09-Piston	41.8	494731
10-External Cylinder	62.8	405675
11- O-ring	0.02	401585
12-Stop Ring	1.4	479617
13-Breakout Ring	0.2	439685
14-Drive Chuck	17	446162
15-Drill Bit	40	466456

Length (Excluding bit)	1487mm	Hole Range	Φ195—Φ254	Recommended rotation speed	14r/min	
Weight (Excluding bit)	188Kg	Connection Thread	API 4 1/2" Reg			
External Diameter	Φ180mm	Working air pressure	0.5—2.5Mpa	Air Consumption	10bar	190L/s
Bit Shank	Cop84	Impact frequency at 17Bar	20Hz		18bar	370L/s
	DHD380				24bar	

According to requirement of client, top sub can be made as the design with double spanners and protected with tungsten carbide inserts; Quantity of air guide holes on the check valve can be increased to enhance flushing of rock cuttings.

DTH BITS FOR 8" DTH HAMMER

Drill Bit	Bit Diameter	Flushing	Gauge	Front	Weight	Model
	(mm)	Holes	Buttons	Buttons	(Kg)	
 DHD380 Cop84	195	3	9×φ18	9×φ18	34	100979
	203	2	10×φ18	10×φ18	36	181708
	216	3	12×φ18	12×φ18	45	141877
	254	3	12×φ18	20×φ18	58	108855
	305	4	12×φ18	30×φ18	75	162912
 SD8	195	3	9×φ18	9×φ18	33	153461
	203	3	10×φ18	10×φ18	37	111413
	216	4	12×φ18	12×φ18	42	195360
	254	4	12×φ18	20×φ18	53	189457
	305	4	12×φ18	30×φ18	80	162612
 QL80	195	3	9×φ18	9×φ18	33	186122
	203	3	10×φ18	10×φ18	37.5	104857
	216	4	12×φ18	12×φ18	42	181634
	254	4	12×φ18	20×φ18	54	129101
	305	4	12×φ18	30×φ18	82	127310
 Mission80	195	3	9×φ18	9×φ18	33	189681
	203	3	10×φ18	10×φ18	37.5	152327
	216	4	12×φ18	12×φ18	42	182523
	254	4	12×φ18	20×φ18	54	165901
	305	4	12×φ18	30×φ18	82	172947

Optional:FF--Flat face; CC---Concave;CV--Convex



 **FMS**
**ROCK
DRILLING**
S E R I E S

HANDHELD ROCK DRILLS

PNEUMATIC BREAKERS



*Y20, Y24
*YT24, YT28 (WITH AIRLEG)

INTEGRAL DRILL RODS



For 22 x 108 mm Chuck Type, From 40cm to 800 cm Integral drill rods are available.

Pneumatic breakers are available from 5,5 to 35 kg with point and chiesel tools.

TK5 HANDHELD ROCK DRILLS



TK5 QUALIFICATIONS

WEIGHTS	5,5 Kg
LENGTH	430 mm
PISTONS DIA	33 mm
PPM	2000
AIR CONSUPTIONS	1.150 m3/dk.
WORKING PRESSURE	4-6 BAR
AIR INLET	19mm 3/4

TK5: Developed to meet demanding requirements, this air hammer has proven itself in the crushing of medium and hard materials. Concrete finds its use in open and cast quarries, walls, bridge beams and pillars, cleaning of iron ore ladles, coal, hard and soft mines. Thanks to its easy maintenance, abundant and affordable spare parts, the operating costs are very low.

TK8 HANDHELD ROCK DRILLS



TK8 KIRICI TABANCA ÖZELLİKLERİ	
WEIGHTS	8 Kg
LENGTH	490 mm
PISTONS DIA	37 mm
MOVEMENT LENGTH	100 mm
PPM	1655
AIR CONSUPTIONS	1.125 m3/dk.
WORKING PRESSURE	6 BAR
AIR INLET	19mm 3/4

TK8: Developed to meet demanding requirements, this air hammer has proven itself in the crushing of medium and hard materials. Concrete finds its use in open and cast quarries, walls, bridge beams and pillars, cleaning of iron ore ladles, coal, hard and soft mines. Thanks to its easy maintenance, abundant and affordable spare parts, the operating costs are very low.

TK12 HANDHELD ROCK DRILLS



TK12 KIRICI HAVA TABANCA ÖZELLİKLERİ	
WEIGHTS	12 Kg
LENGTH	610 mm
PISTONS DIA	35 mm
PPM	1200
AIR CONSUPTIONS	0,90 m3/dk.
WORKING PRESSURE	6 BAR
AIR INLET	19mm 3/4
SHANKS	22Hx82

TK12: Developed to meet demanding requirements, this air hammer has proven itself in the crushing of medium and hard materials. Concrete finds its use in open and cast quarries, walls, bridge beams and pillars, cleaning of iron ore ladles, coal, hard and soft mines. Thanks to its easy maintenance, abundant and affordable spare parts, the operating costs are very low.



HEADQUARTER:
OSTİM OSB QTR 1201 st. NO:92
YENİMAHALLE / ANKARA

www.fmsgrup.com

info@fmsgrup.com

+90 (312) 394 1367

BRANCH OFFICE:
SERİF ALI QTR
BURHAN ST.
NO:44
ÜMRANİYE/
İSTANBUL